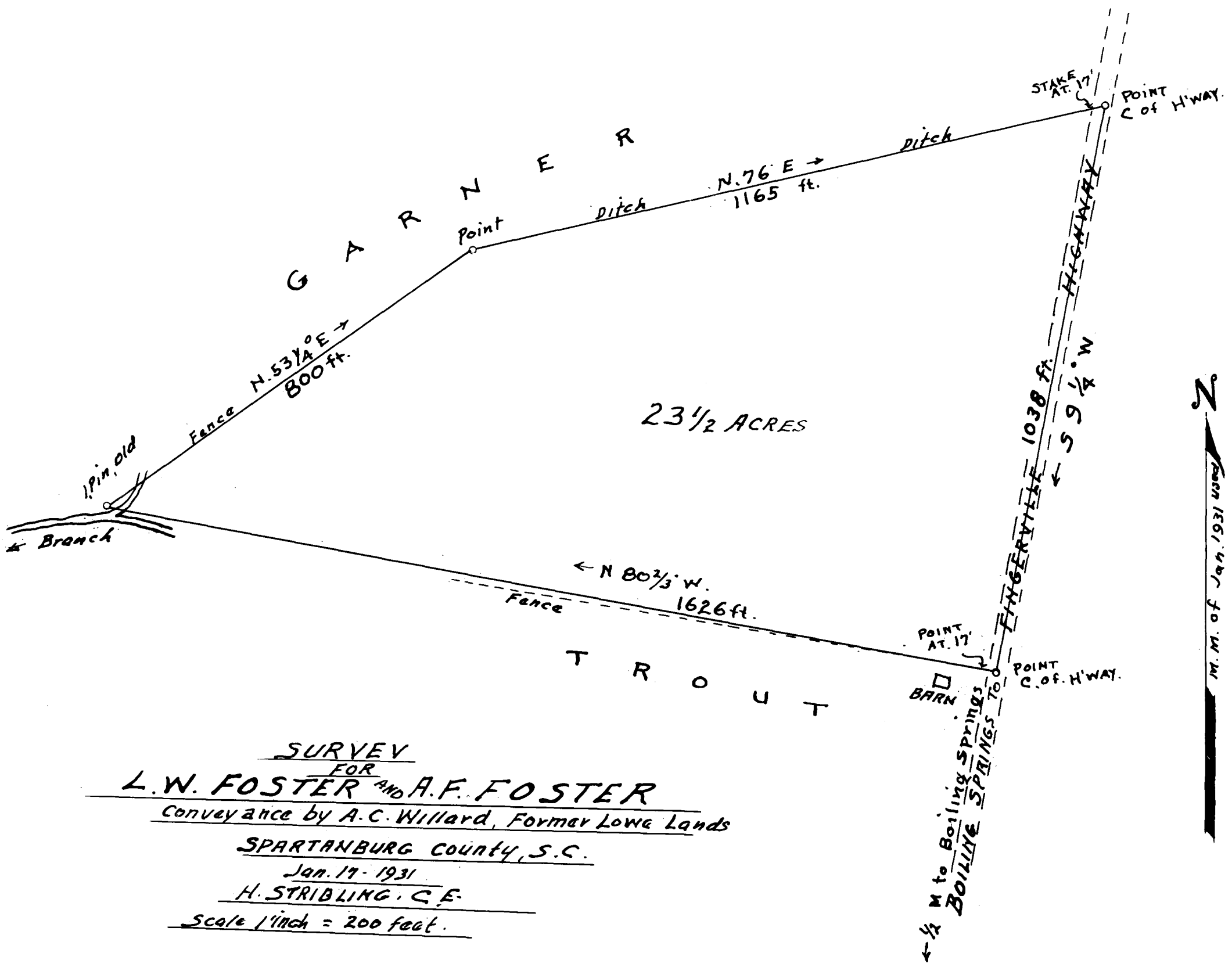


88

EX PARTE
L.W. & A.F. FOSTER



SURVEY
FOR
L.W. FOSTER AND A.F. FOSTER
 conveyance by A.C. Willard, Former Lowe Lands
SPARTANBURG COUNTY, S.C.
 Jan. 17, 1931
H. STRIBLING, C.E.
 Scale 1/4 inch = 200 feet.

Registered, Certified & Examined March 10-1931 at 11:51 A.M.