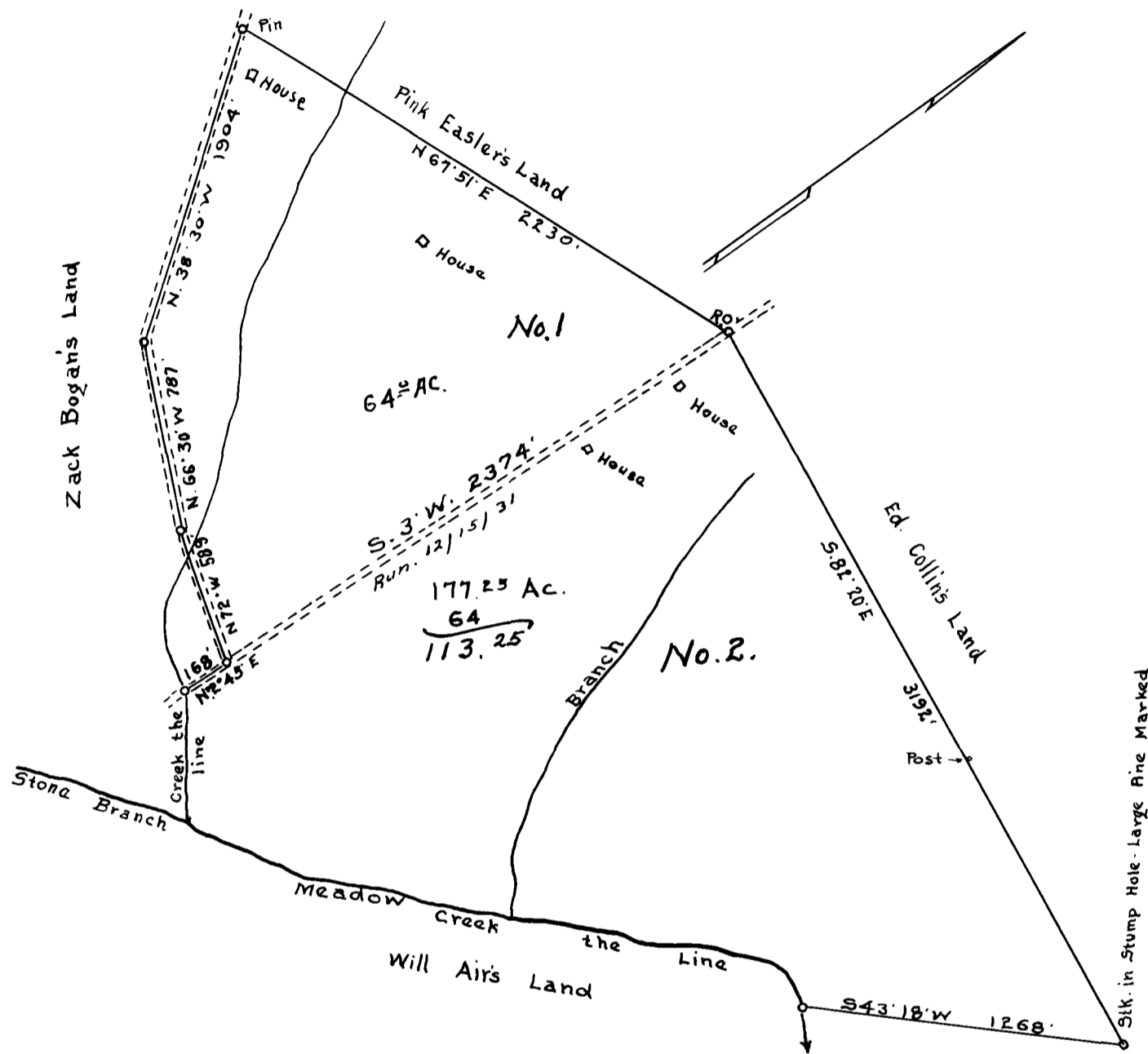


EX PARTE
W. O. JOHNSON



PROPERTY OF
W. O. JOHNSON
NEAR
INMAN
SPARTANBURG CO. S.C.

Not surveyed-replatted from survey by T.T. Linder 2-24-22

Scale 1" = 600'

11-29-24

REV. 12/15/31.

H.C.W.

W.N. Willis - Engrs.
Spartanburg, S.C.

Registered, certified & Examined Dec. 22-1931 at 4:07 P.M.