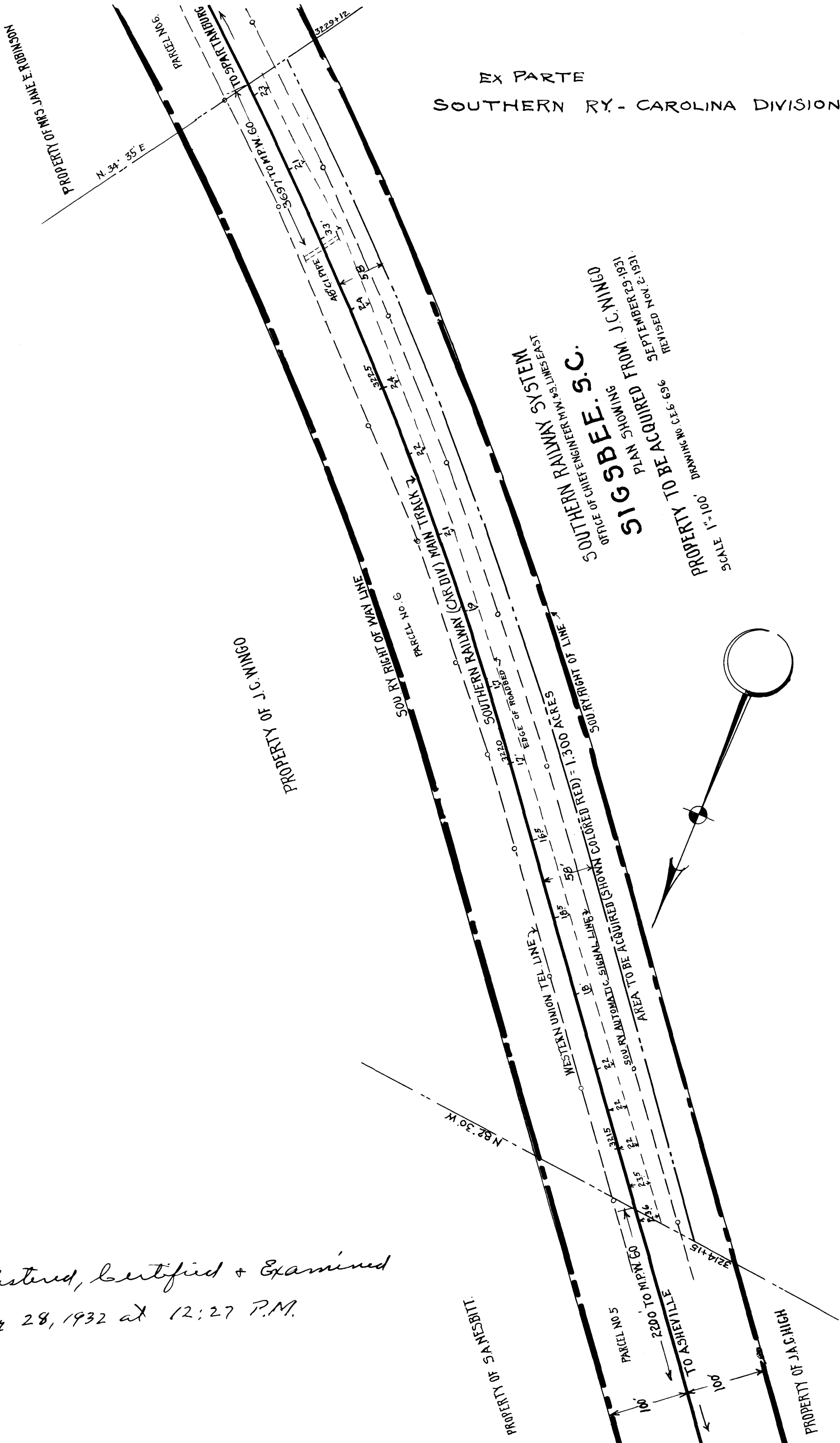


EX PARTE
SOUTHERN RY. - CAROLINA DIVISION



RECEIVED NOV. 2, 1931
 SEPTEMBER 29, 1931
 IDIAN SHOWING
 OFFICE OF CHIEF ENGINEER
SIGSBEE & CO.
 SOUTHERN RAILWAY SYSTEM
 ENGINEERS
 PROPERTY TO BE ACQUIRED FROM J.C. MINNICO
 SCALE 1"=100' DRAWING NO. C.E.S. 6396

*Registered, Certified & Examined
 May 28, 1932 at 12:27 P.M.*