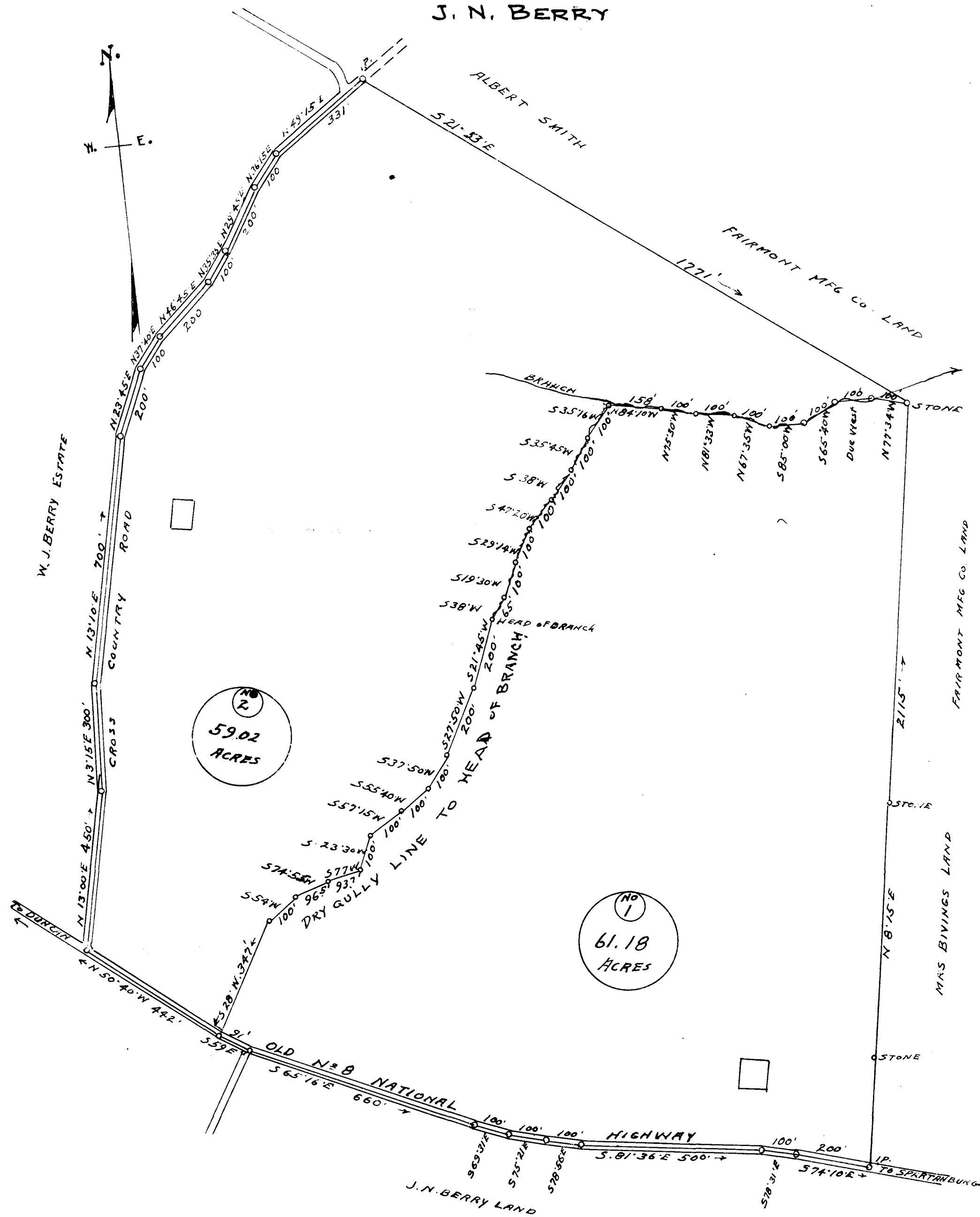


EX PARTE
J. N. BERRY



PROPERTY OF J. N. BERRY

SPARTANBURG - COUNTY - S. C.

SURVEYED AND PLATTED

DEC. 22-1931 H. S. BROCKMAN
SURVEYOR

SCALE 1" = 250 FEET

Registered, Certified & Examined Oct. 2-1933 at 11:37 A.M.