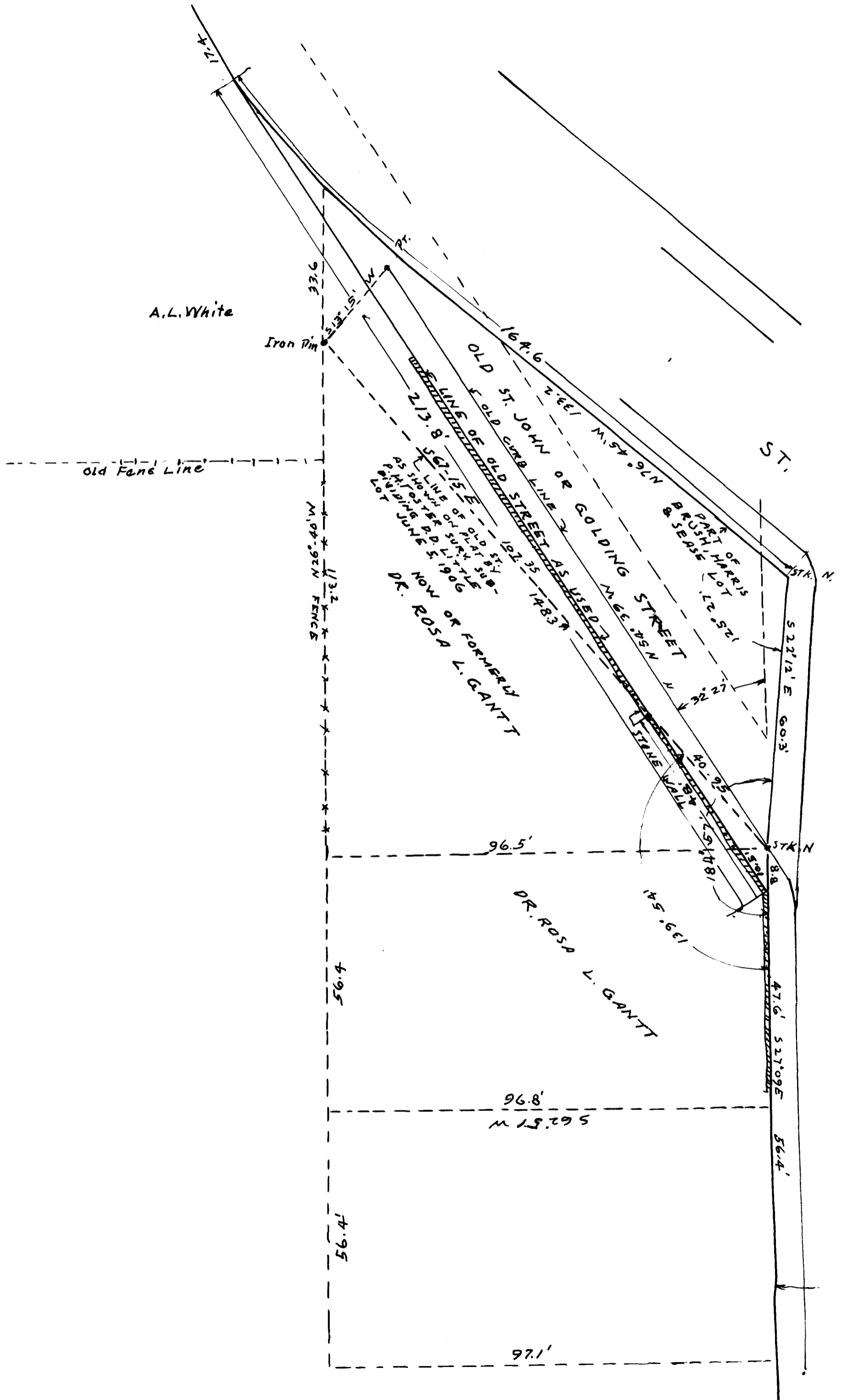


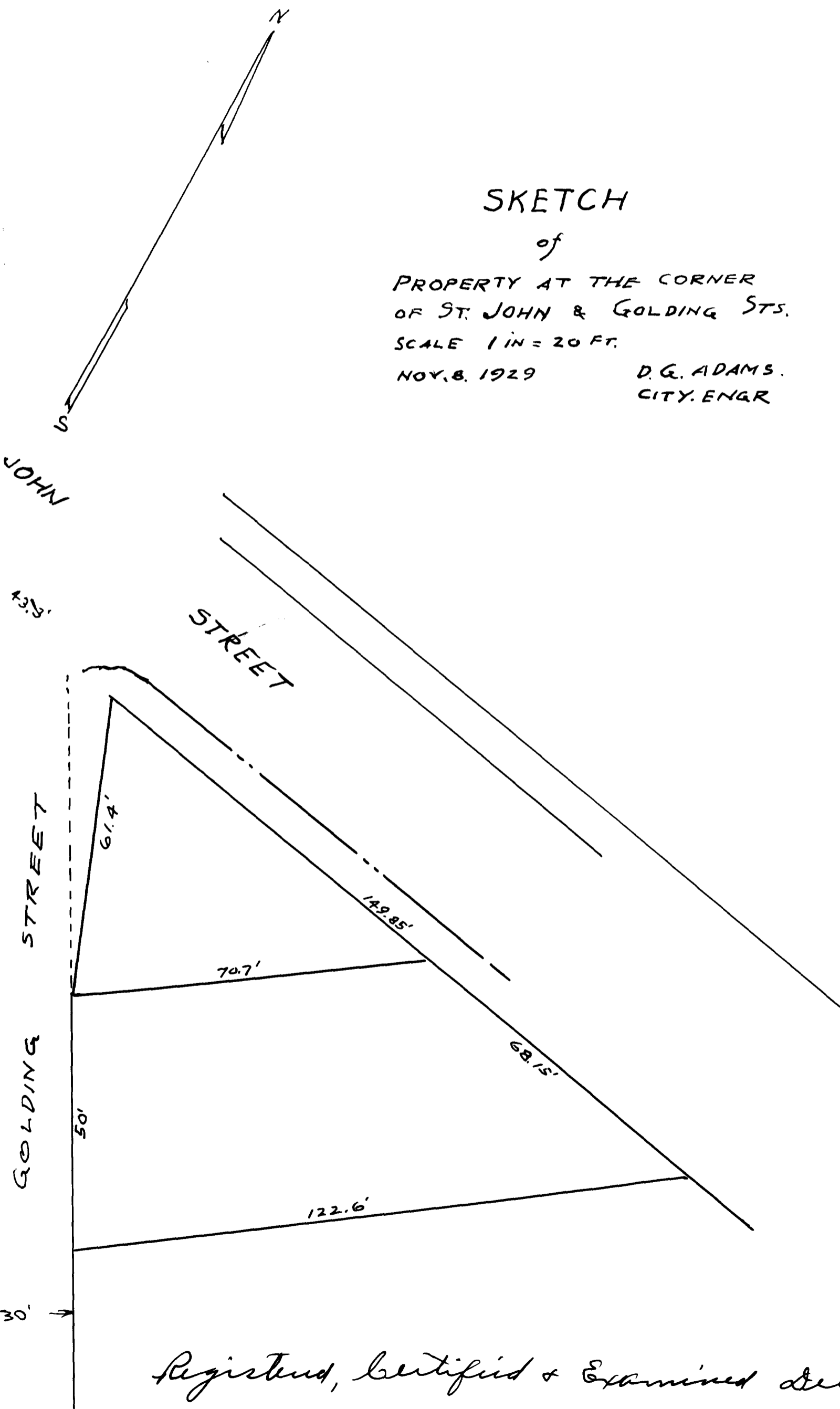
EX PARTE
CITY OF SPARTANBURG



141

SKETCH

of
 PROPERTY AT THE CORNER
 OF ST. JOHN & GOLDING STS.
 SCALE 1 IN = 20 FT.
 NOV. 8, 1929 D. G. ADAMS.
 CITY ENGR



Registered, Certified & Examined Dec. 4-1933 at 4:40 P.M