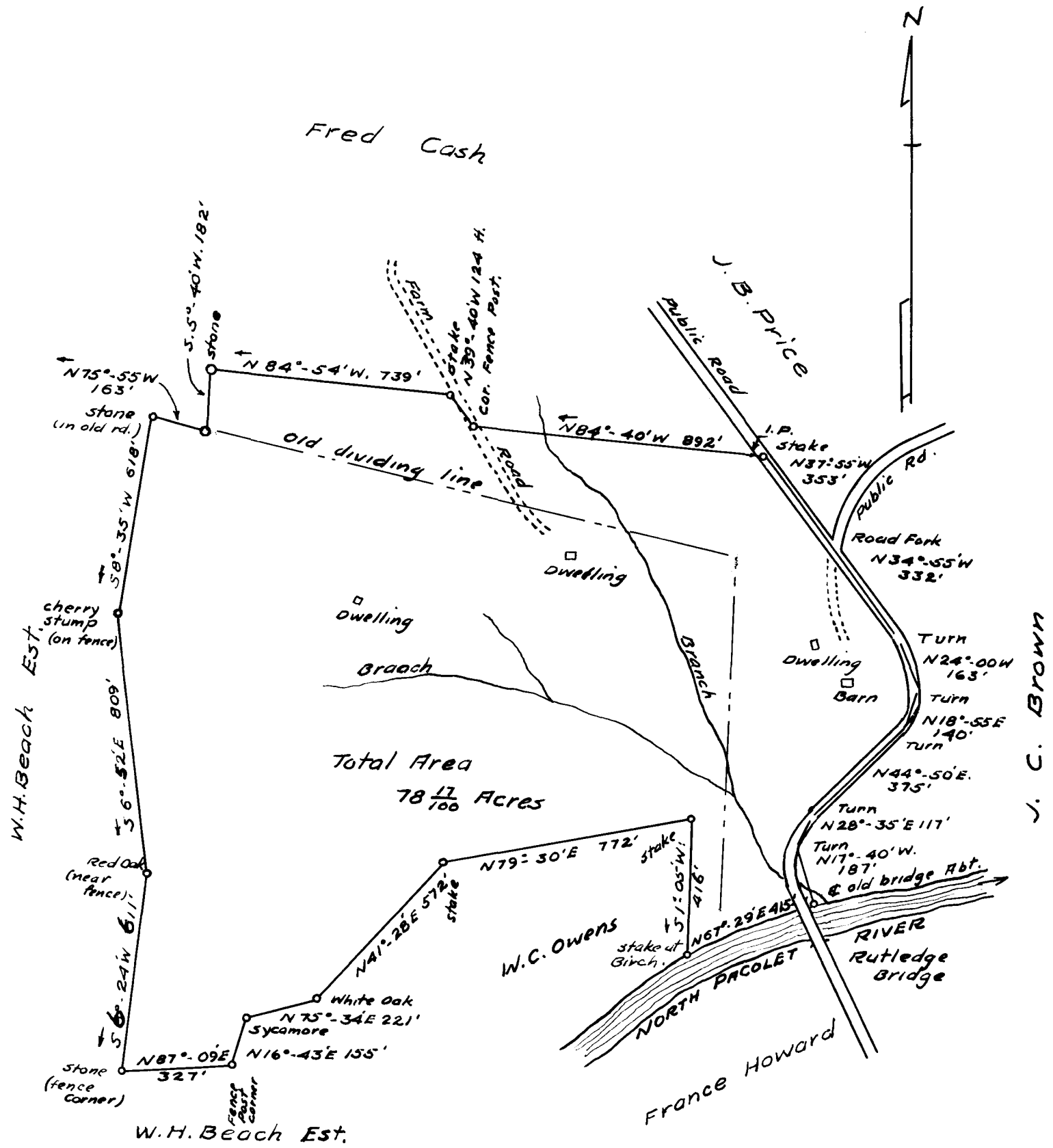


EX PARTE
C. L. BEACH



Total Area
78 ¹⁷/₁₀₀ Acres

PROPERTY OF
C. L. BEACH

LOCATED IN CAMPOBELLA TOWNSHIP
SPARTANBURG CO S.C.

SCALE 1 IN. = 400 FT. SURVEYED July 26, 1933

THE HARWOOD BEEBE CO,
ENGINEERS
SPARTANBURG, S. C.

Registered, Certified & Examined Dec. 16-1933 at 12:35 P.M.