

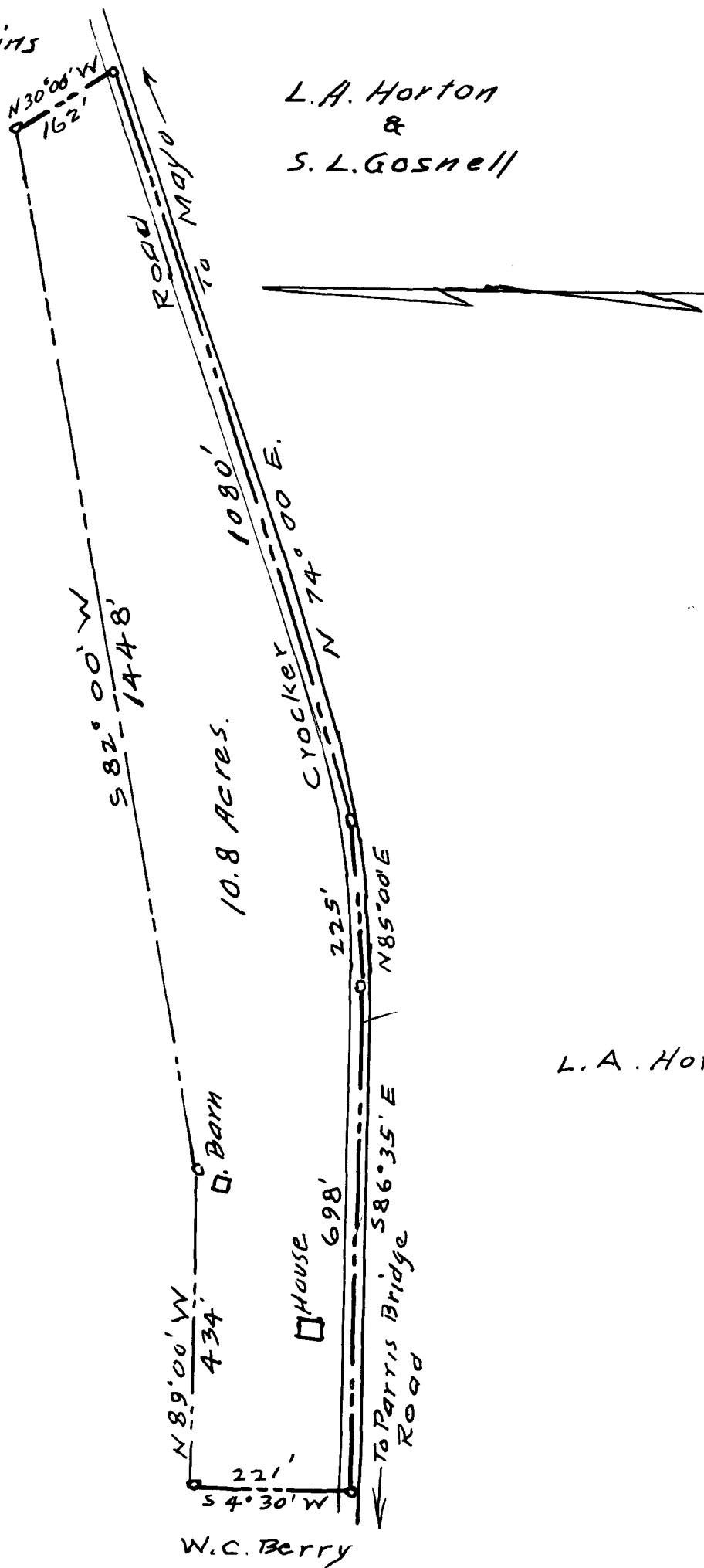
EX PARTE
W. C. BERRY

Mrs. Edith Figgins

L. A. Horton
&
S. L. Gosnell

W. C. Berry

L. A. Horton.



PROPERTY OF
W. C. BERRY
CHEROKEE TOWNSHIP
SPARTANBURG COUNTY S.C
SCALE: 1" = 200' AUG. 12, 1933

Surveyed BY
The Harwood Beebe Company
Civil Engineers
Spartanburg, S.C

Registered, Certified & Examined January 9-1934 at 11:32 A.M