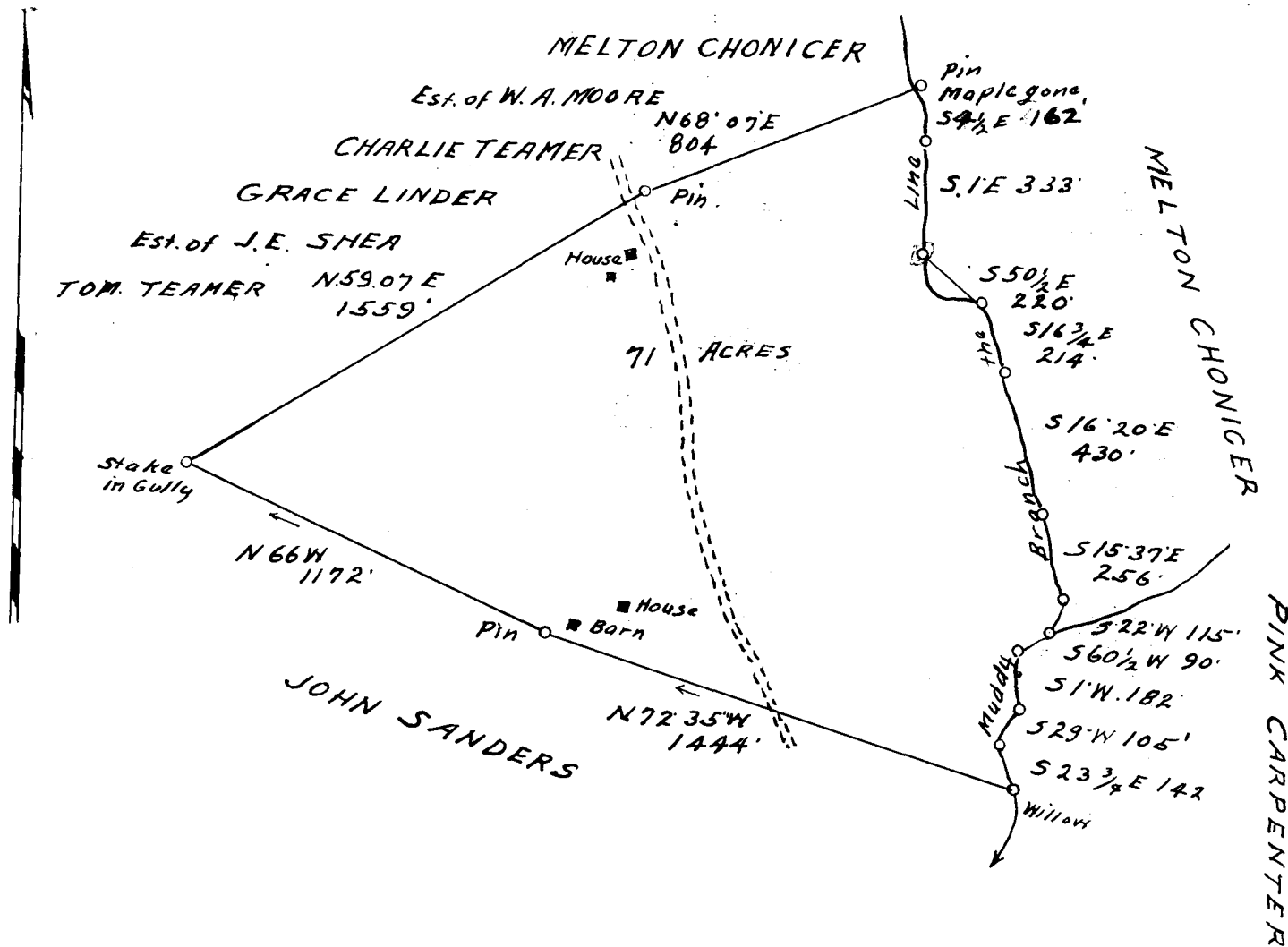


153

EX PARTE
JOHN SANDERS



SURVEY & PLAT
PROPERTY OF

JOHN SANDERS

1½ MILES SOUTH OF COWPENS

IN PACOLET TOWNSHIP; SPARTANBURG CO.

SOUTH CAROLINA

JAN. 26. 1934

500' = 1 INCH
MAGNETIC MERIDIAN. 1934

Thos. T. Linder
Reg. L. S.

Registered, Certified & Examined March 15. 1934 at 10:04 a.m