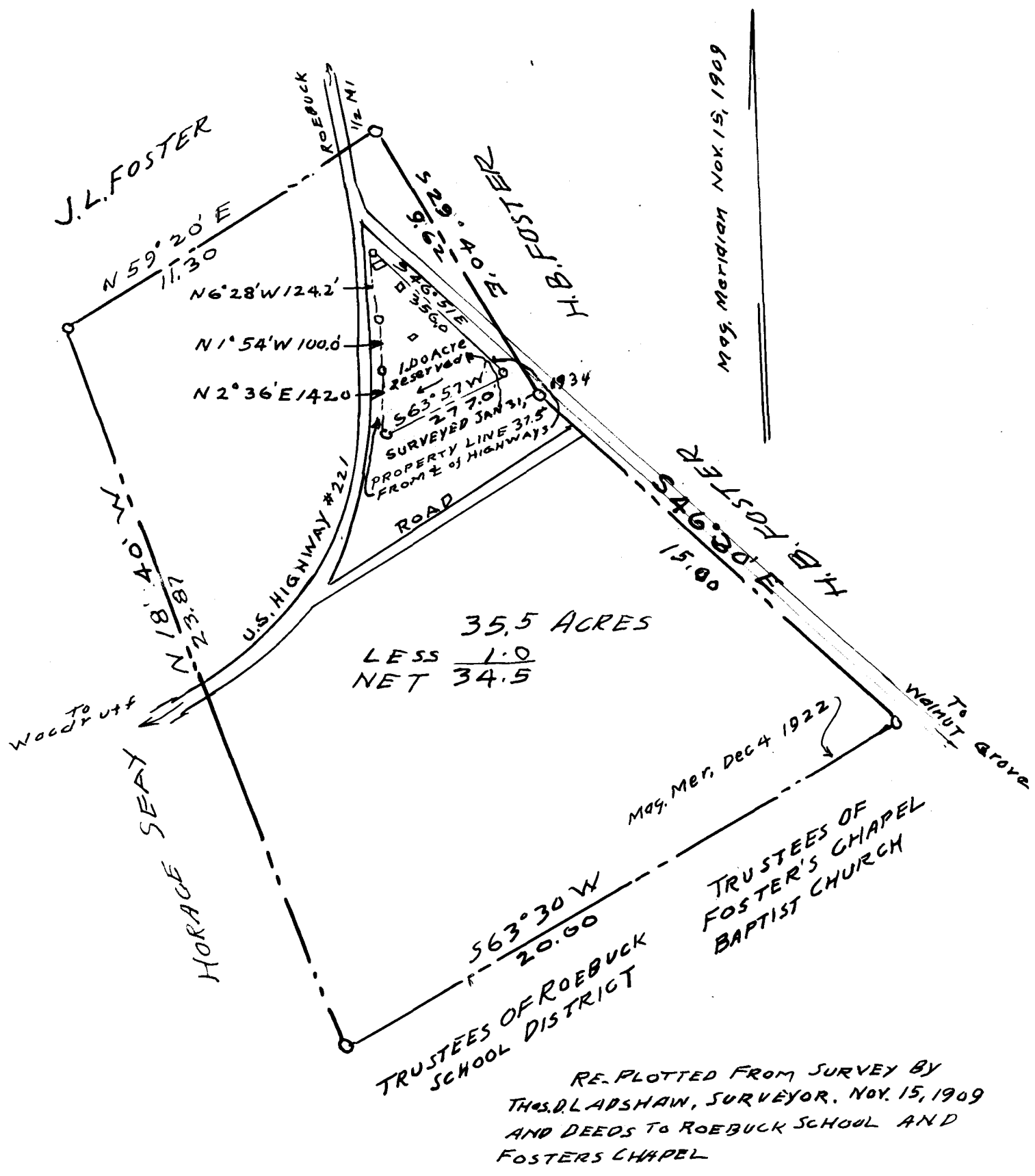


EX PARTE  
CHARLIE BREWTON



PROPERTY OF  
**CHARLIE BREWTON**  
 WALNUT GROVE TOWNSHIP  
 SPARTANBURG COUNTY S.C  
 SCALE: 1" = 4 CH. JAN 27, 1934  
 The Harwood Beebe Co.  
 Civil Engineers  
 Spartanburg, S.C

Registered, certified & Examined March 19, 1934 at 11:25 a.m