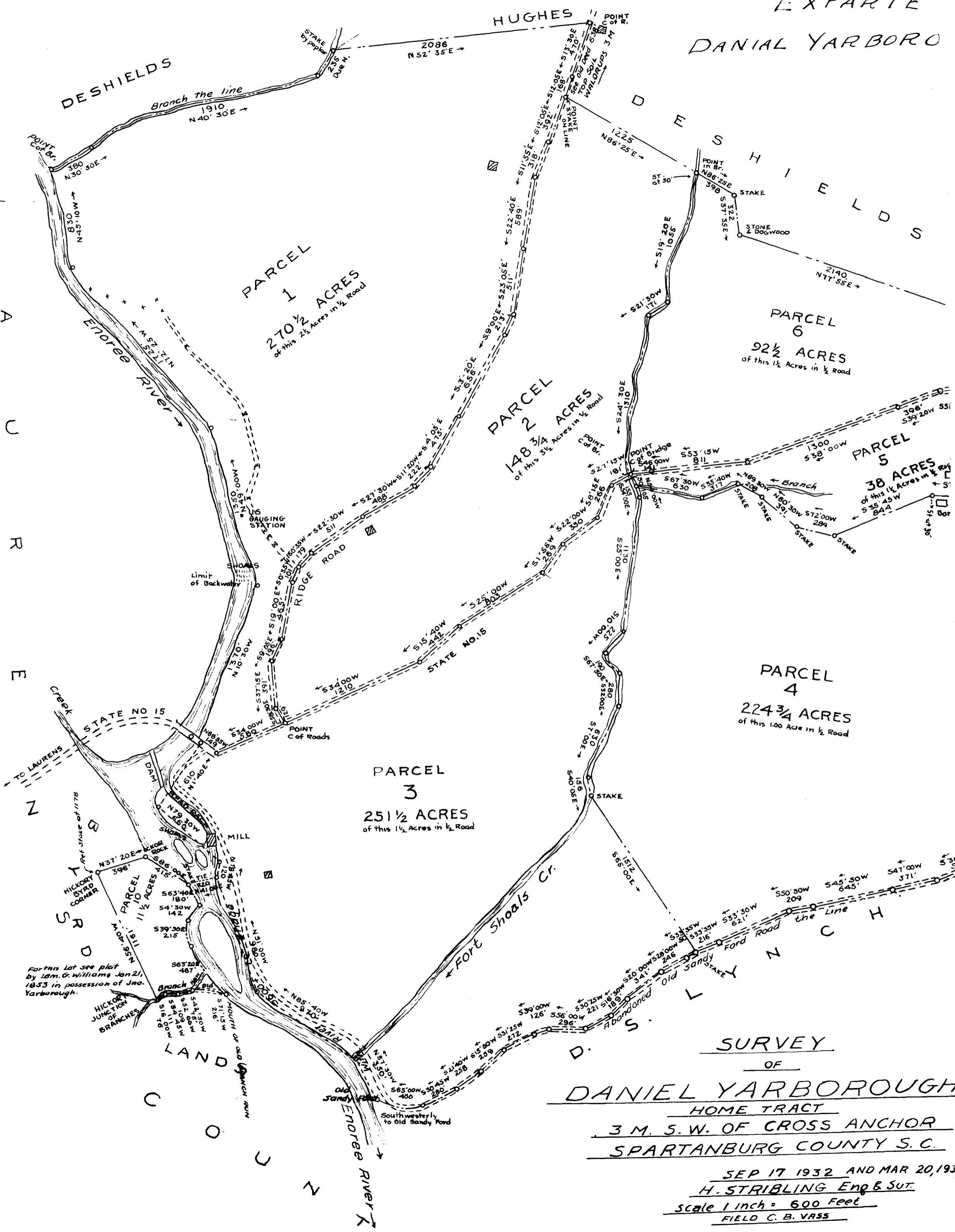


EX PARTE  
DANIAL YARBORO

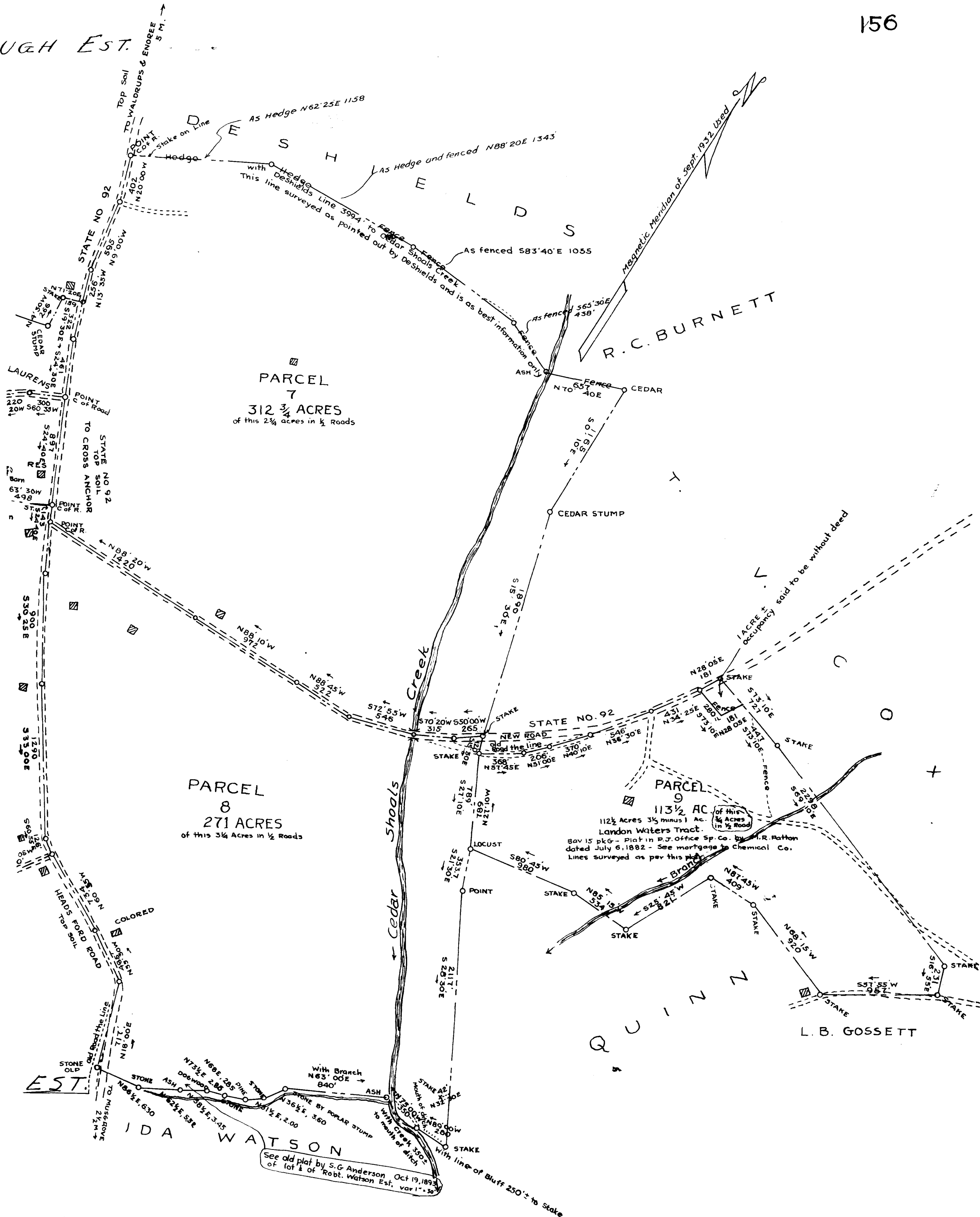


For this lot see plat by 18m. G. Williams Jan 21, 1853 in possession of Jno. Yarborough.

SURVEY  
OF  
DANIEL YARBOROUGH  
HOME TRACT  
3 M. S. W. OF CROSS ANCHOR  
SPARTANBURG COUNTY S. C.

SEP 17 1932 AND MAR 20, 1934  
H. STRIBLING Eng & SUR.  
Scale 1 inch = 600 Feet  
FIELD C. B. VASS

UGH EST.



PARCEL 7  
 312 <sup>3</sup>/<sub>4</sub> ACRES  
 of this 2 <sup>3</sup>/<sub>4</sub> acres in <sup>1</sup>/<sub>2</sub> Roads

PARCEL 8  
 271 ACRES  
 of this 3 <sup>3</sup>/<sub>4</sub> Acres in <sup>1</sup>/<sub>2</sub> Roads

PARCEL 9  
 113 <sup>1</sup>/<sub>2</sub> AC  
 of this 1 <sup>1</sup>/<sub>2</sub> Acres in <sup>1</sup>/<sub>2</sub> Roads  
 Landon Waters Tract.  
 8av 15 pkg - Plat in P.J. Office Sp. Co. by W.R. Patton dated July 6, 1882 - See mortgage to Chemical Co. Lines surveyed as per this plat.

See old plat by S.G. Anderson Oct 19, 1893 of lot 1 of Robt. Watson Est. var 1" - 30'

IDA WATSON

R.C. BURNETT

L. B. GOSSETT

Q U I N Z

EST.