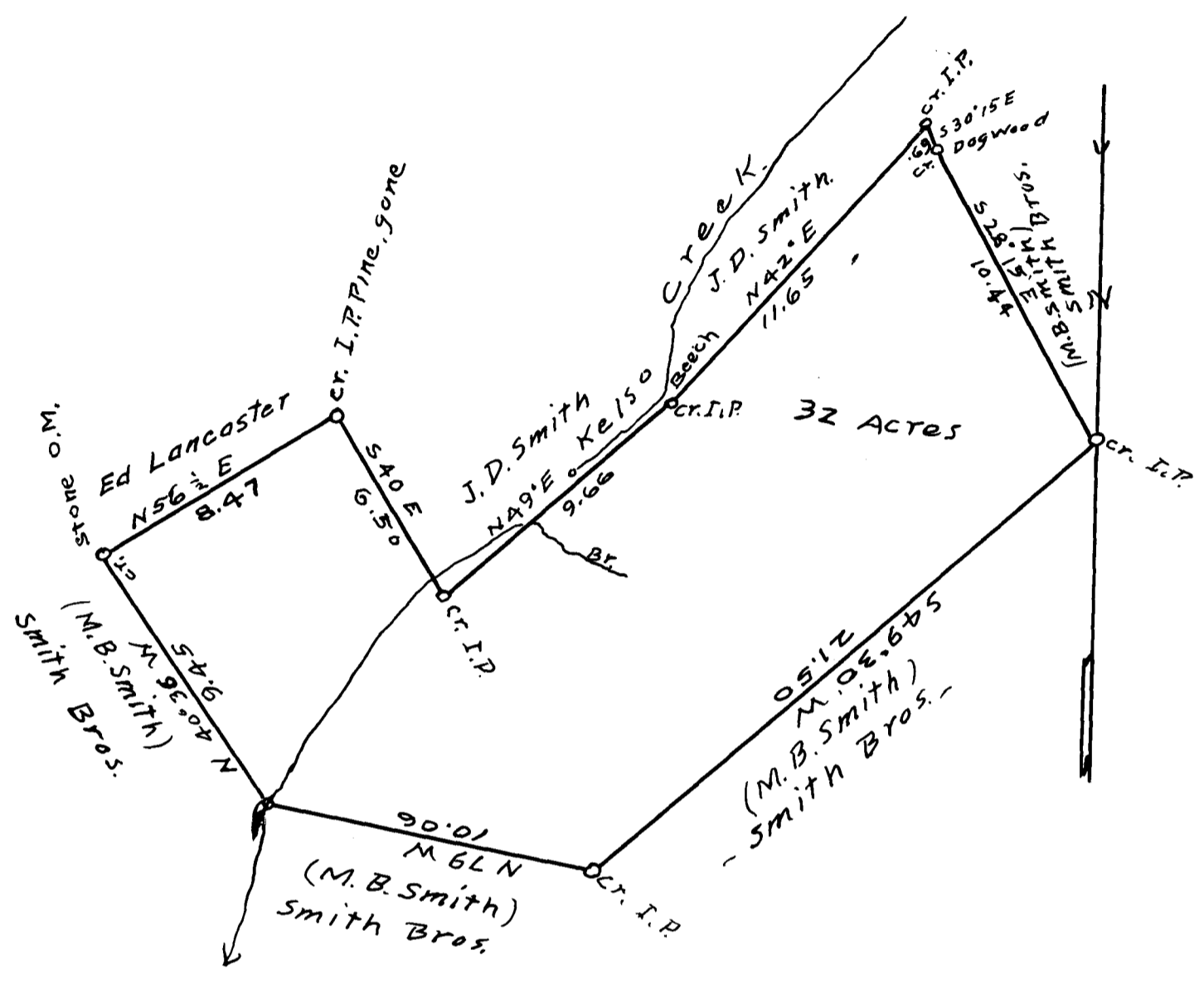


160

EX PARTE  
SMITH BROS.



State of South Carolina  
Spartanburg County.

The above plat of land represents a portion of  
J.D. Smith farm sold to Smith Bros. + contains  
32 acres.

Surveyed this 17<sup>th</sup> day of Jan'y, 1934

Scale 5 ch. per 1"

H.J. Wells (Surgr.)

Registered, Certified + Examined April 19-1934 at 12:04 P.M.