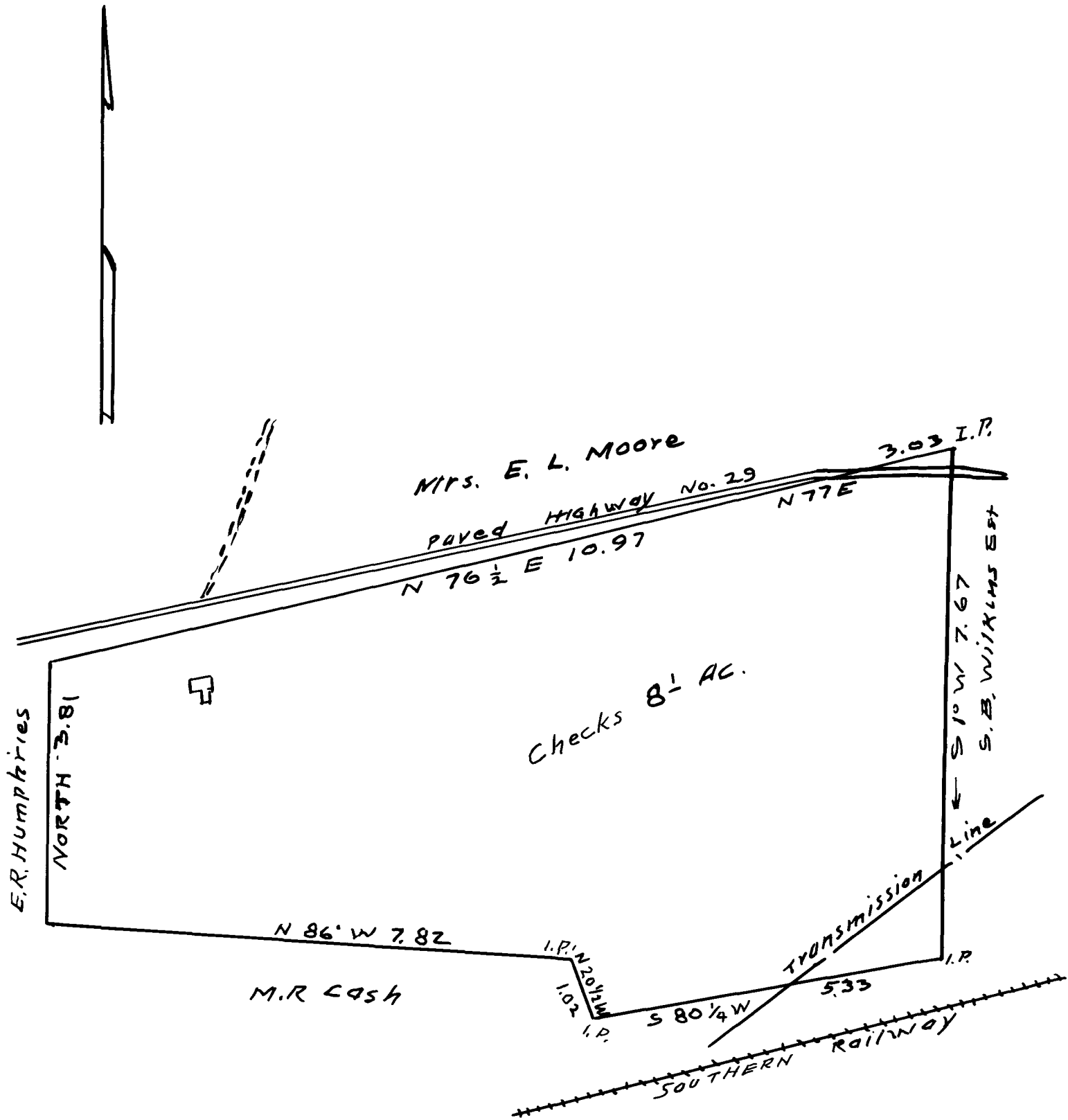


EX PARTE
J. WORCE MARTIN



PROPERTY OF
 J. WORCE MARTIN
 IN COWPENS
 SPARTANBURG CO. S.C.
 See Plat by Ellinder Aug 3, 1933
 Distances checked & revised
 scale 1" = 2 Chs May 3, 1934
 W.N. Willis, C.E.

Registered, Certified & Examined May 22-1934 at 4:03 P.M.