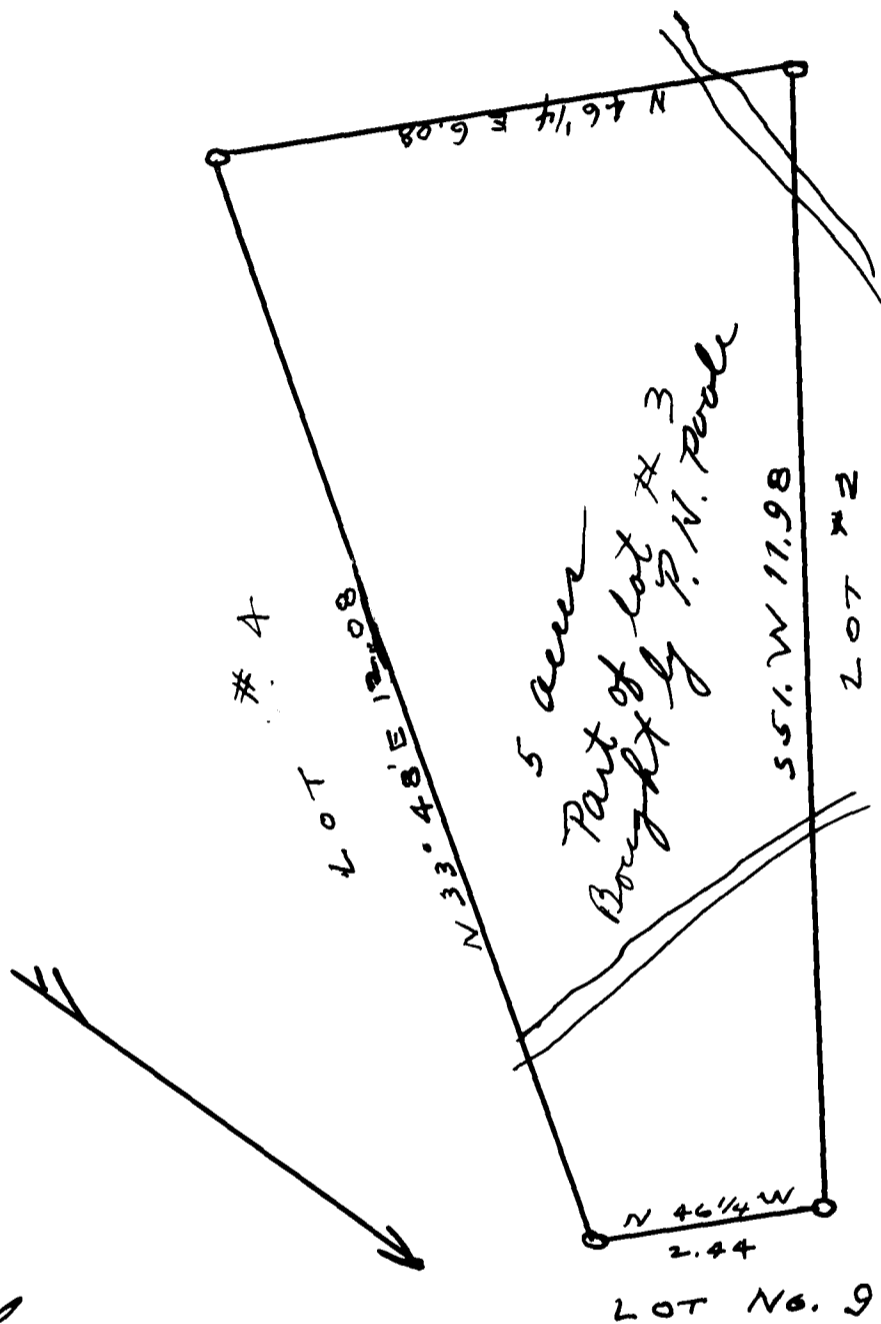


EX PARTE
JOHN M. POOLE EST.



Scale
2 chains per inch

State of South Carolina
County of Spartanburg
at the request of P. N. Poole,
I have this day laid off a tract
of 5 acres being part of lot #3
of the pro. M. Poole Estate, having
such meets and bounds as above
plat represents.

Jan. 29, 1910

S. J. Dufre
Surveyor

Registered, Certified & Examined May 26-1934 at 10:14 a.m.