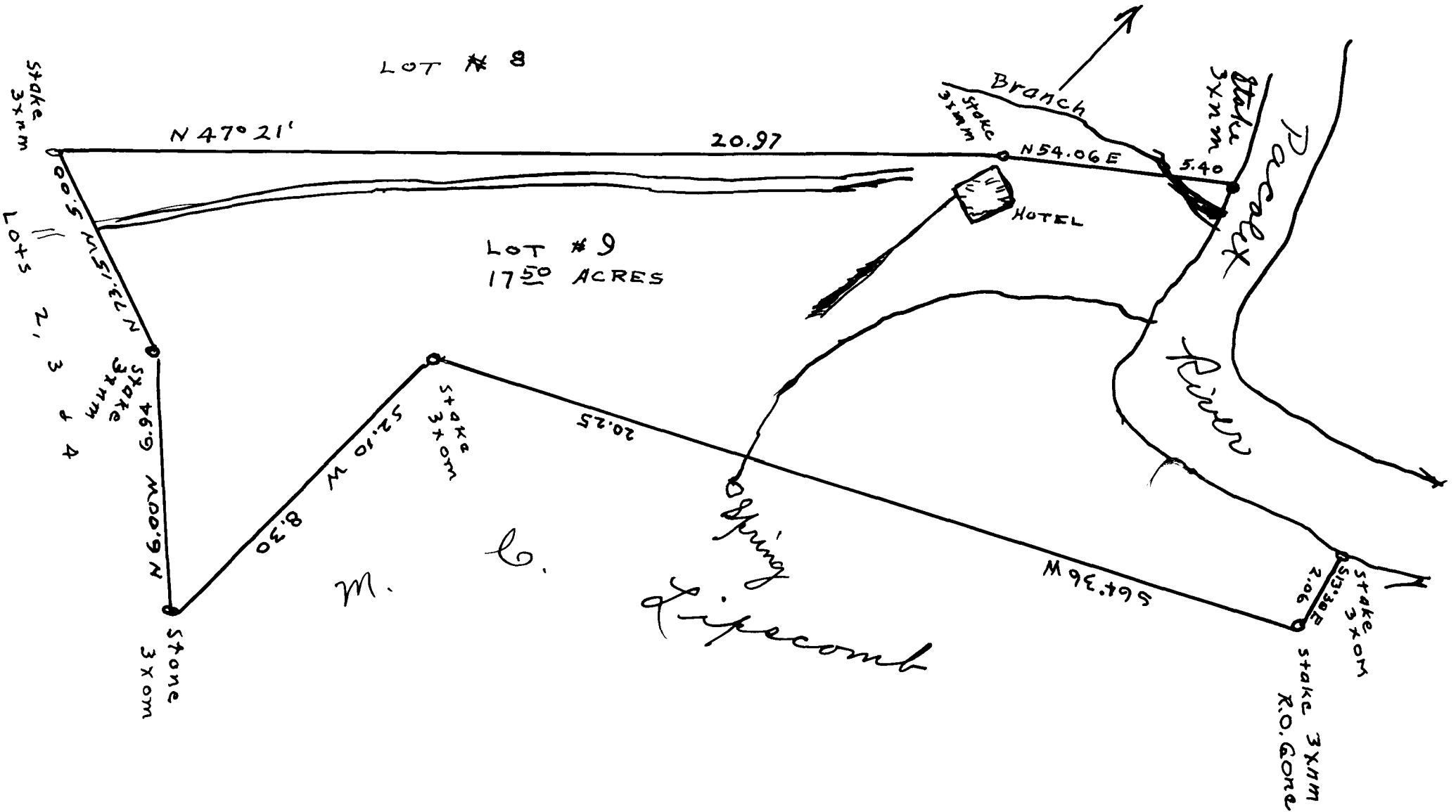


13

EX PARTE
JOHN M. POOLE EST.



State of South Carolina
Spartanburg County
at the request of J. M. Poole & S. J. Poole,
Executors, we have surveyed and laid off a
certain lot or parcel of land of the estate
of John M. Poole, dec'd, known as lot # 9
and allotted to P. H. Poole and having such
shape, marks, meter and bounds as annexed
plot represents. containing 17⁵⁰ acres.
Surveyed Jan. 23-27, 1905

Ladshaw & Ladshaw
Surveyors

Scale 3 chs. per inch.