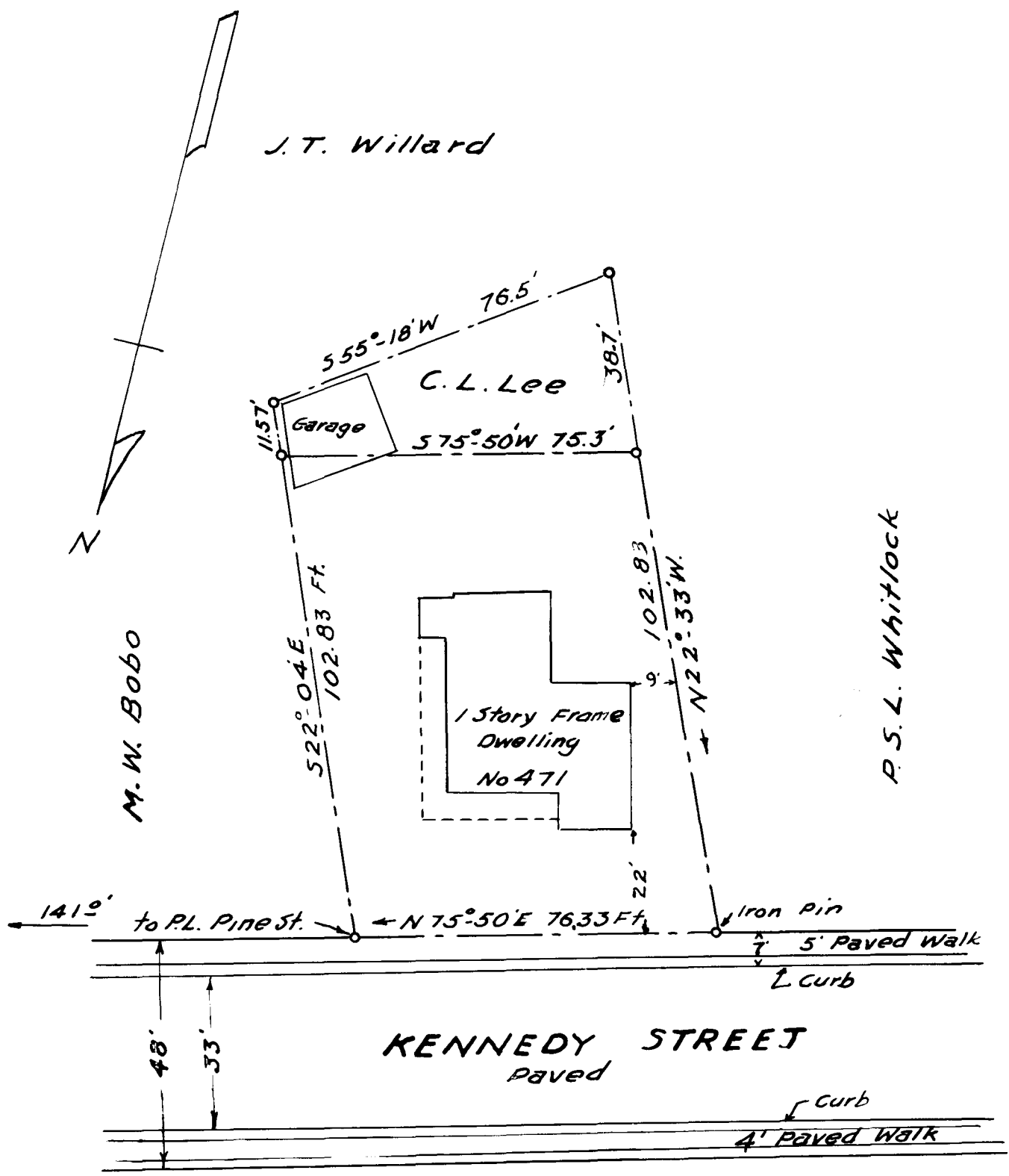


EX PARTE  
C. L. LEE



PROPERTY OF

C. L. LEE

IN THE CITY OF SPARTANBURG, S. C.

Scale: 1" = 30' June 1, 1934

The Harwood Beebe Company  
Civil Engineers  
Spartanburg, S. C.

Registered, Certified & Examined June 6-1934 at 9:27 a.m.