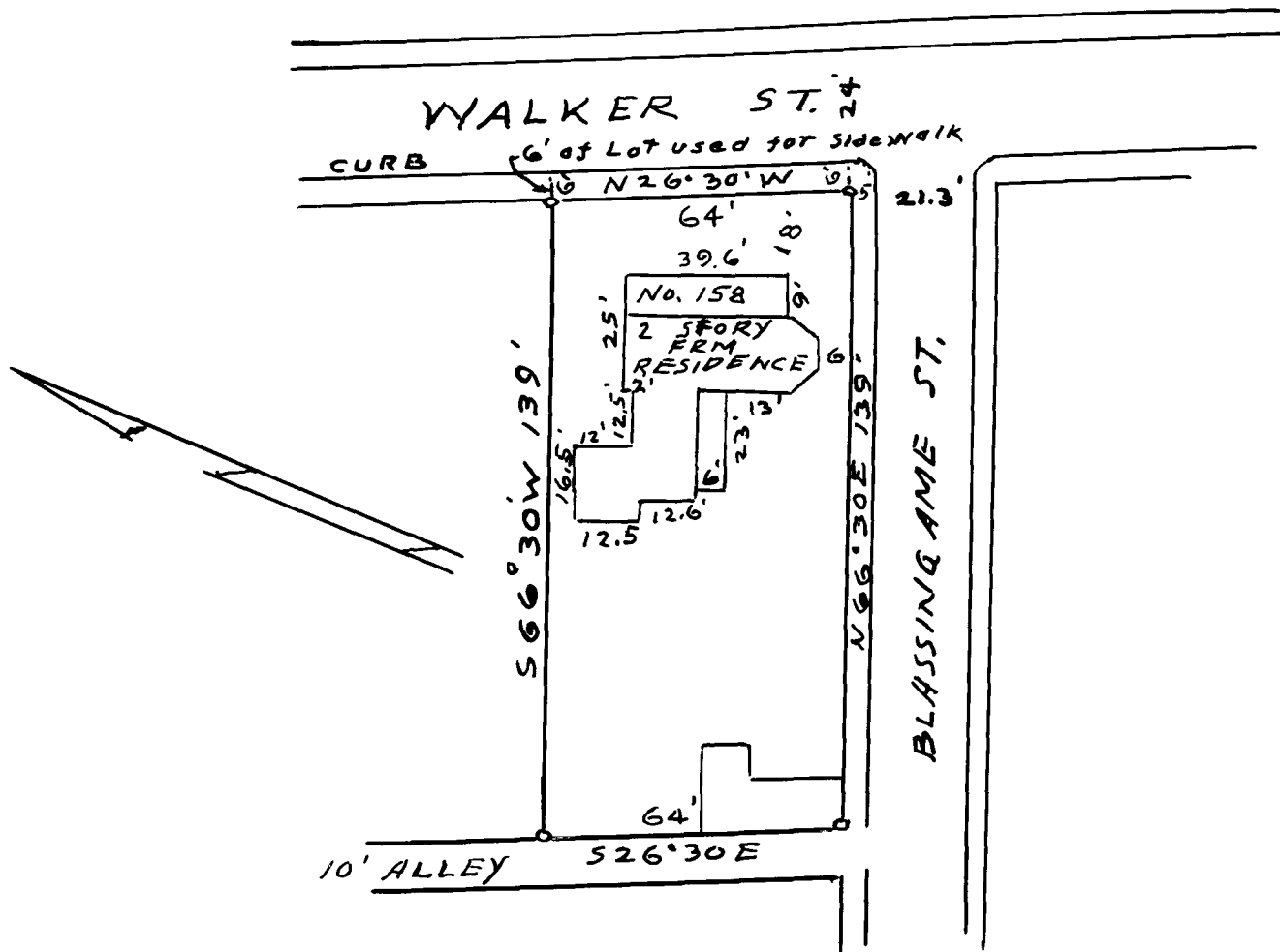


77

EX PARTE
J. W. THOMASON



PROPERTY OF
 J. W. THOMASON
 IN THE CITY OF
 SPARTANBURG, S.C.
 SCALE 1" = 40' JUNE 18, 1927
 W. N. VILLIS, ENGRS.
 SPARTANBURG, S.C.

RMC 5-I-411

F.C.W.

Registered, Certified & Examined June 22, 1934 at 3:20 P.M.