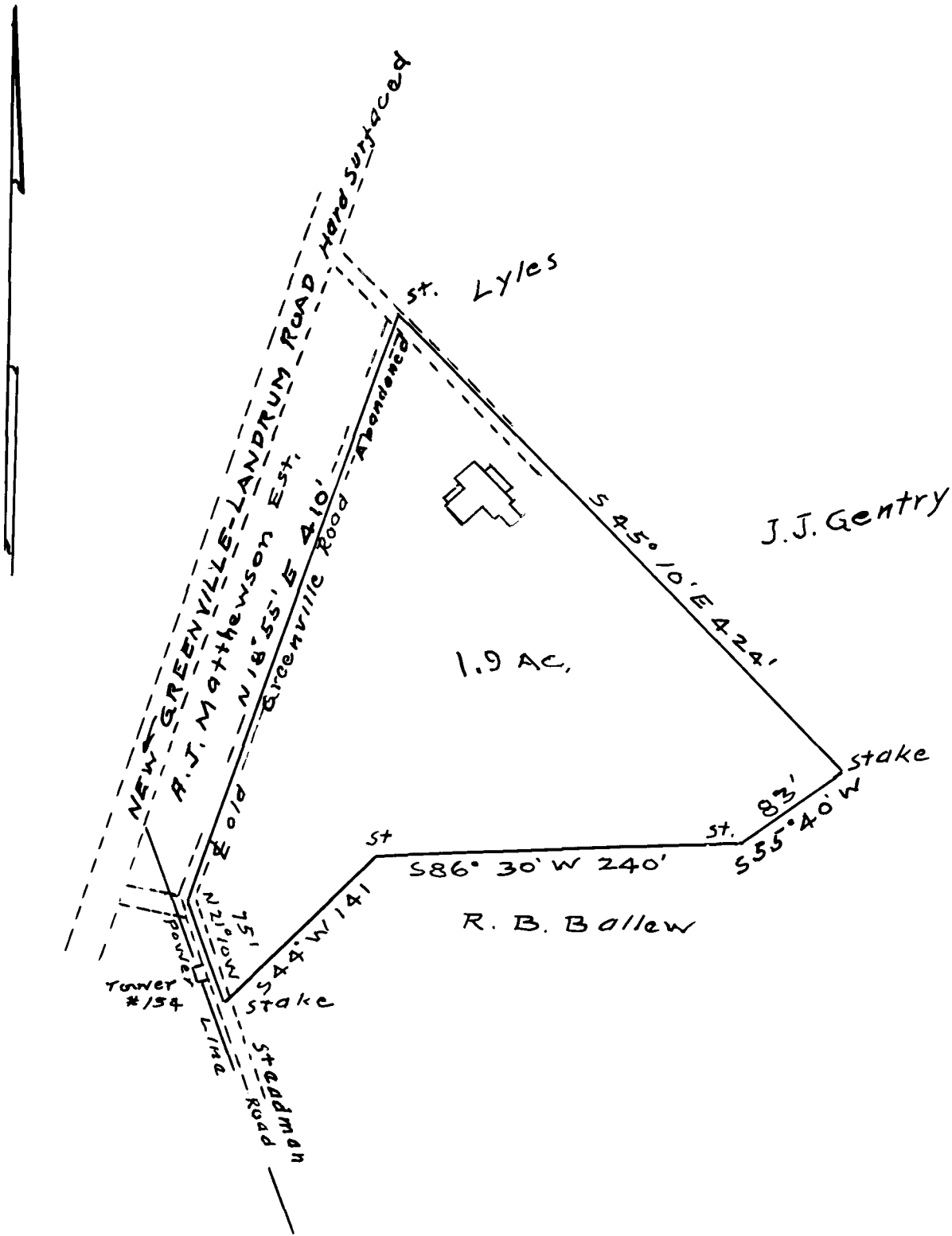


84

EX PARTE
JOHN L. KIRKLAND



PROPERTY OF
 JOHN L. KIRKLAND
 NEAR LANDRUM
 SPARTANBURG CO, S.C
 see Deed 5-L: 557
 Scale 1" = 100' JUNE 23, 1934
 W. N. WILLIS, C.E.

Registered, Certified & Examined July 2, 1934 at 3:37 P.M.