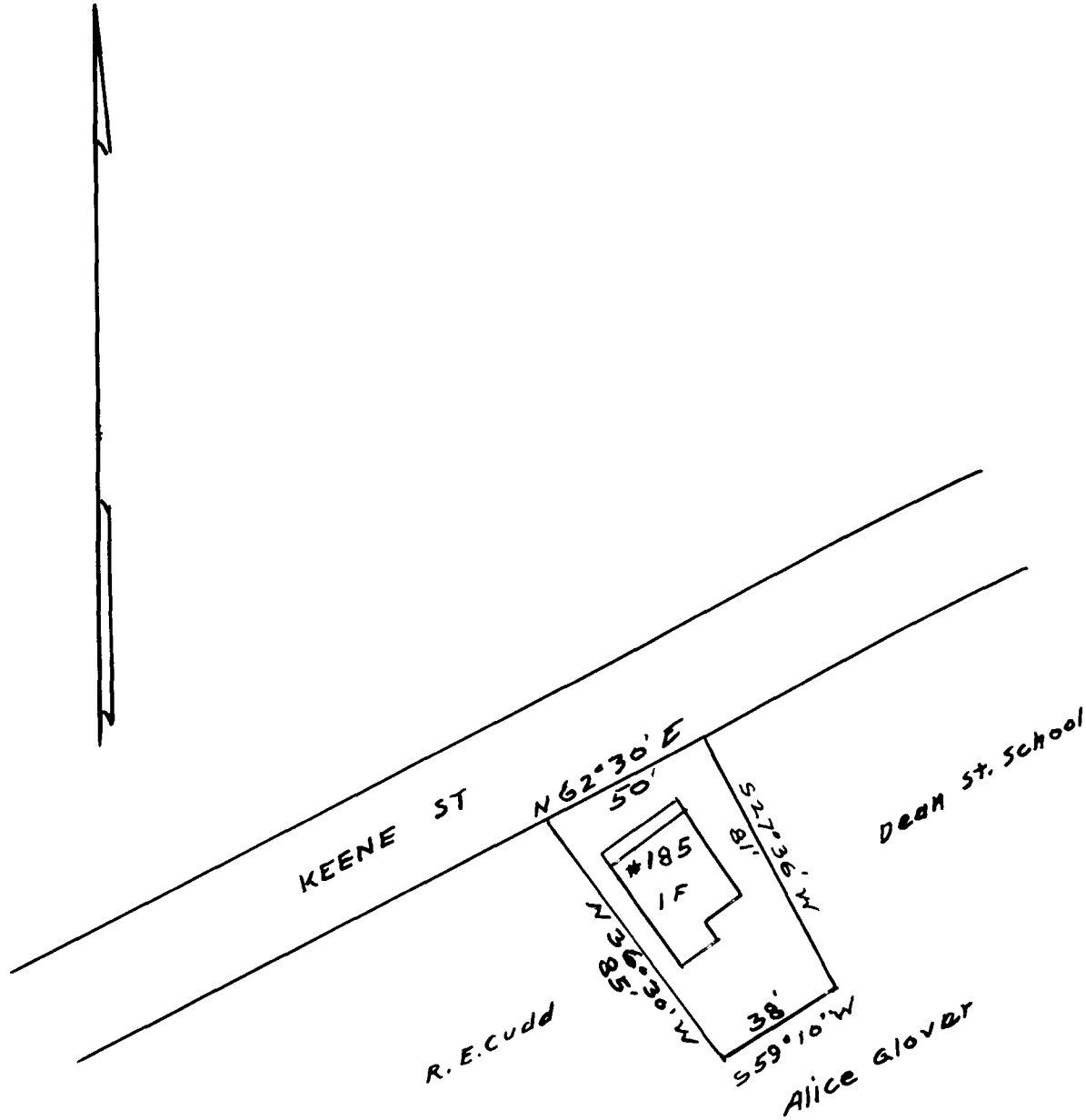


EX PARTE
LUTHER GAMBRELL



PROPERTY OF
LUTHER GAMBRELL
in
SPARTANBURG

SPARTANBURG CO. S.C.
See Deed Book 7E-687
Scale 1" = 50' May 8, 1934
W.N. Willis, C.E.

Registered, Certified & Examined July 3, 1934 at 11:40 a.m.