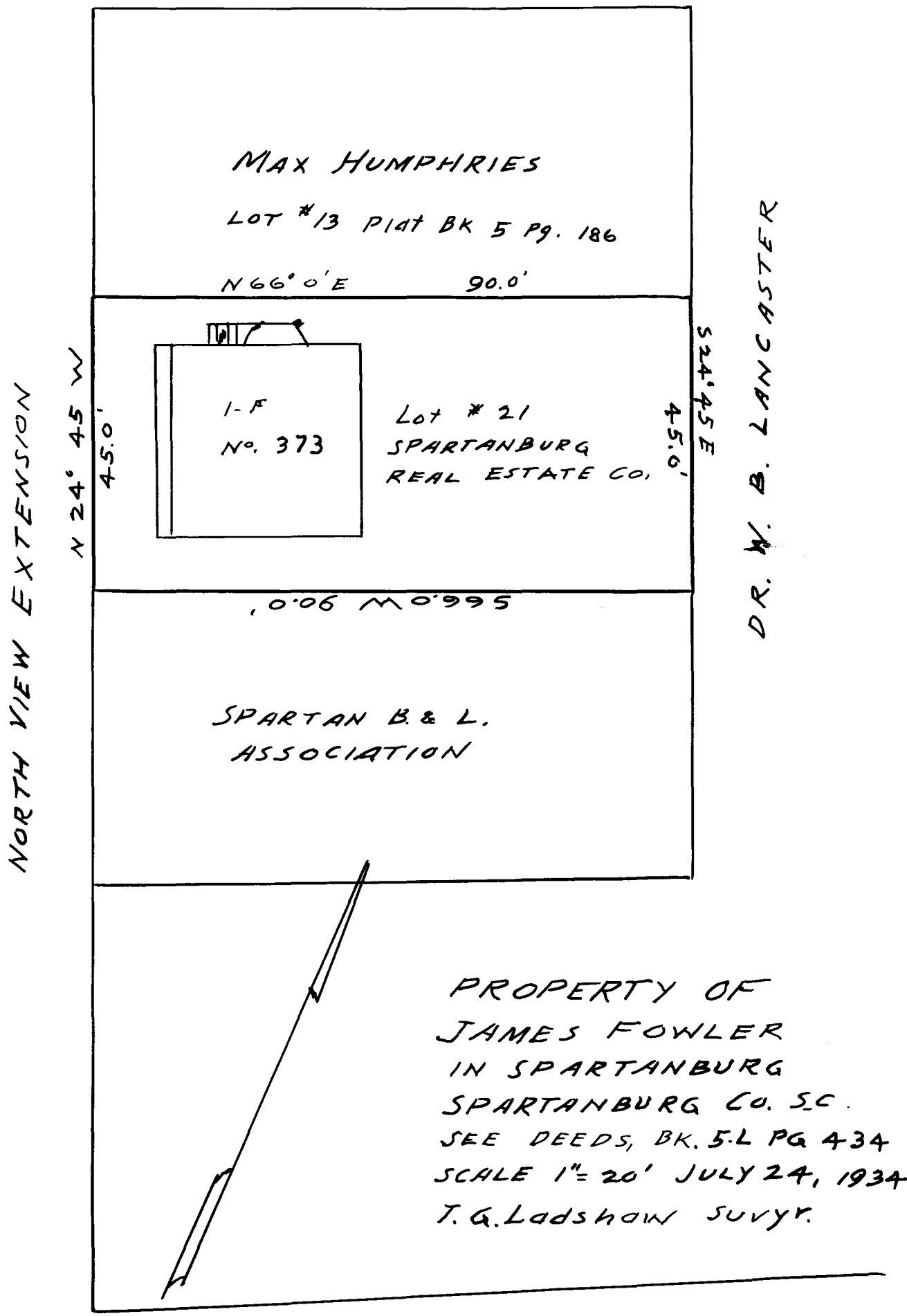


EX PARTE
JAMES FOWLER

BRANCH



MAX HUMPHRIES

LOT #13 PLAT BK 5 PG. 186

N 66° 0' E 90.0'

1-F
No. 373

LOT # 21
SPARTANBURG
REAL ESTATE CO.

0.06 M 0.995

SPARTAN B. & L.
ASSOCIATION

PROPERTY OF
JAMES FOWLER
IN SPARTANBURG
SPARTANBURG CO. S.C.
SEE DEEDS, BK. 5-L PG 434
SCALE 1" = 20' JULY 24, 1934
T.G. Ladshaw SURVY.

NORTH VIEW EXTENSION

DR. W. B. LANCASTER

CHASE ST.

Registered, Certified + Examined July 25-1934 at 12:12 P.M.