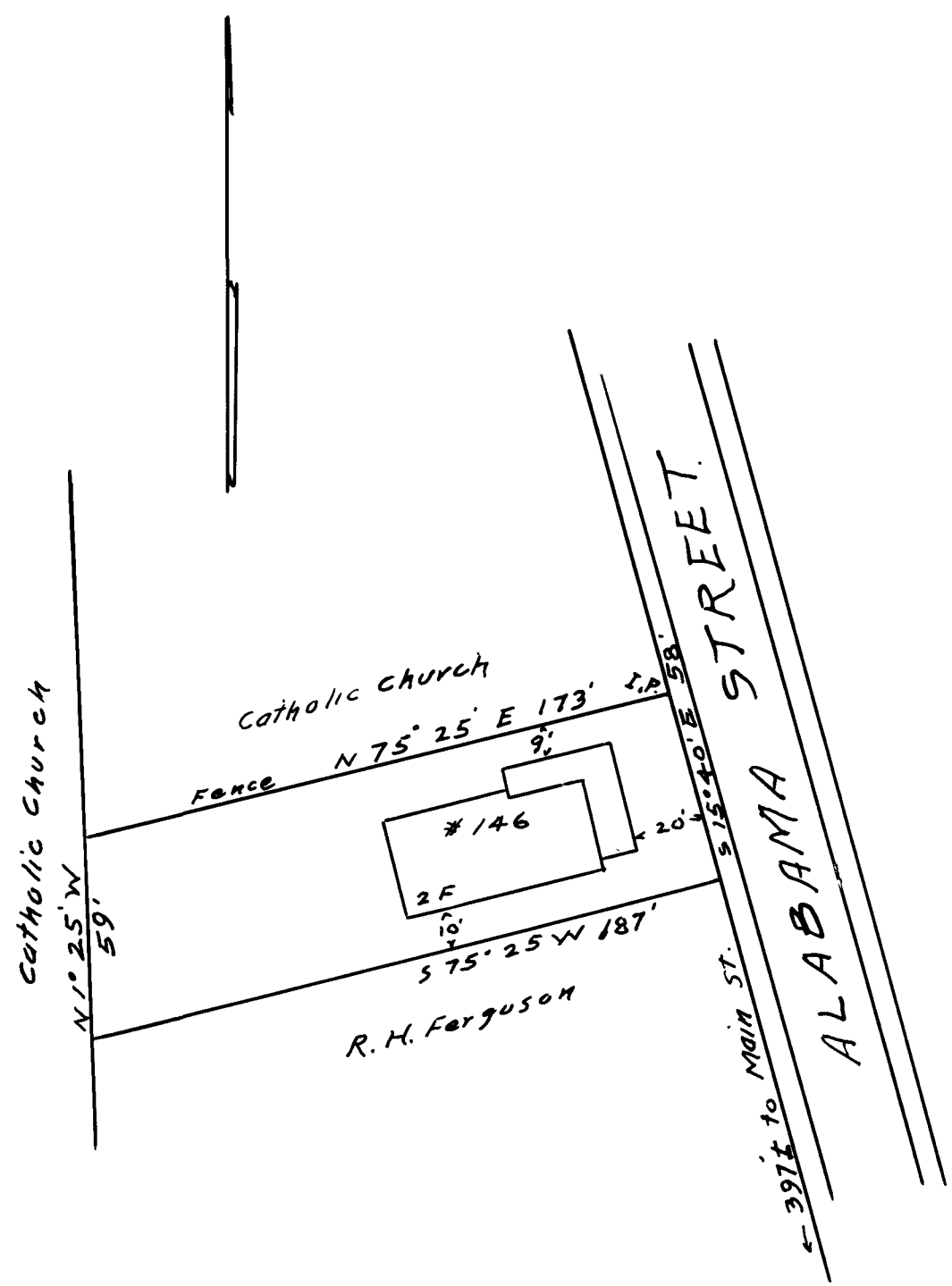


EX PARTE
FANNIE L. CRUTCHFIELD



PROPERTY OF
 FANNIE L. CRUTCHFIELD
 IN SPARTANBURG
 SPARTANBURG CO. S.C.
 scale 1"=50 Aug. 14, 1934
 W. N. Willis, C.E.

Registered, Certified & Examined August 16, 1934 at 4:20 P.M.