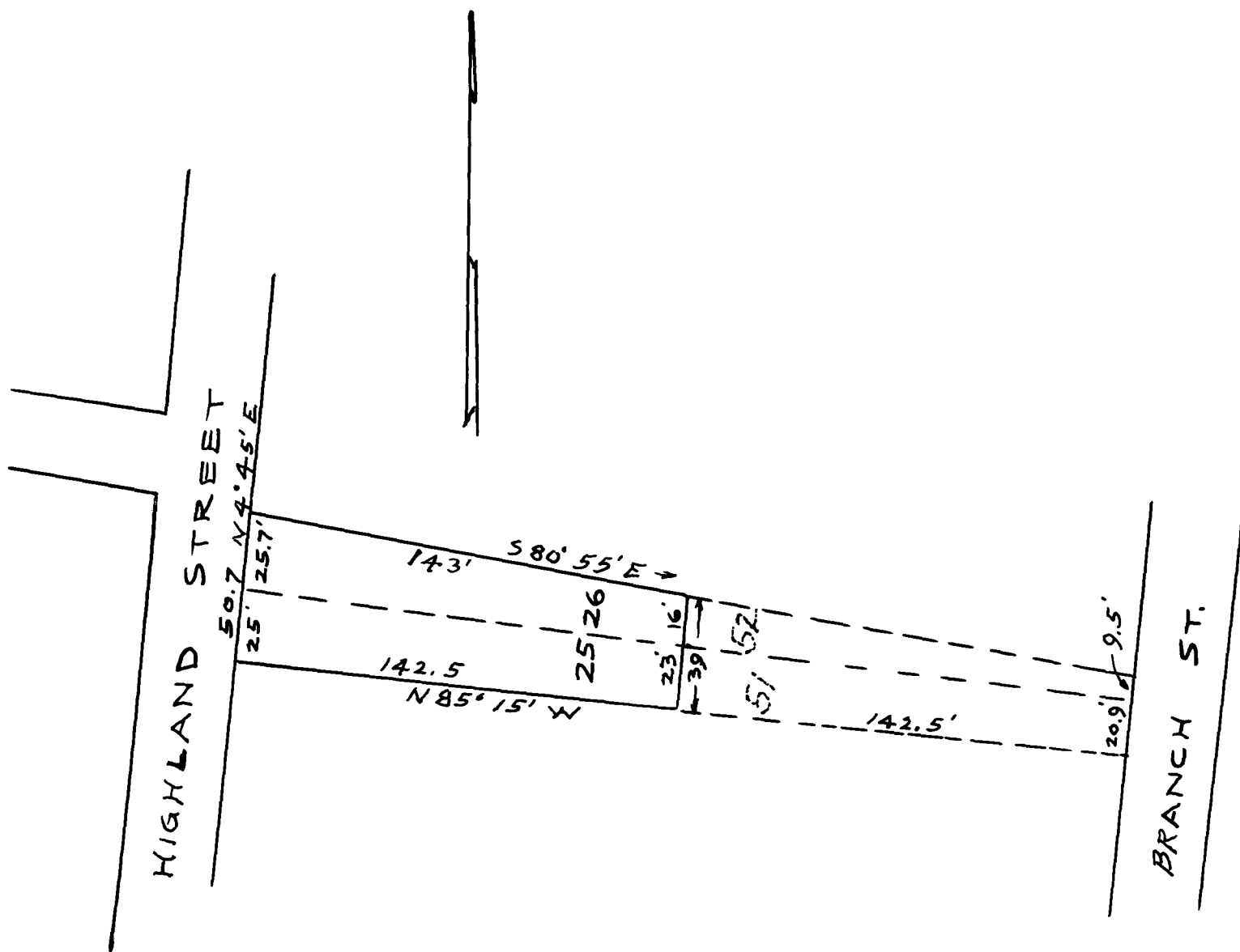


121

EX PARTE  
ERWIN & LULA CHEEK



PROPERTY OF  
ERWIN & LULA CHEEK  
IN SPARTANBURG  
SPARTANBURG CO. S.C.

Revision Plat Recorded  
in Plat Book 8 Page 77  
T.M. LYLES PROP. 2-24-27  
Scale 1" = 50' AUG. 17, 1934

W. N. Willis, C.E.

Registered, certified & Examined Aug. 17-1934 at 3:17 P.M.