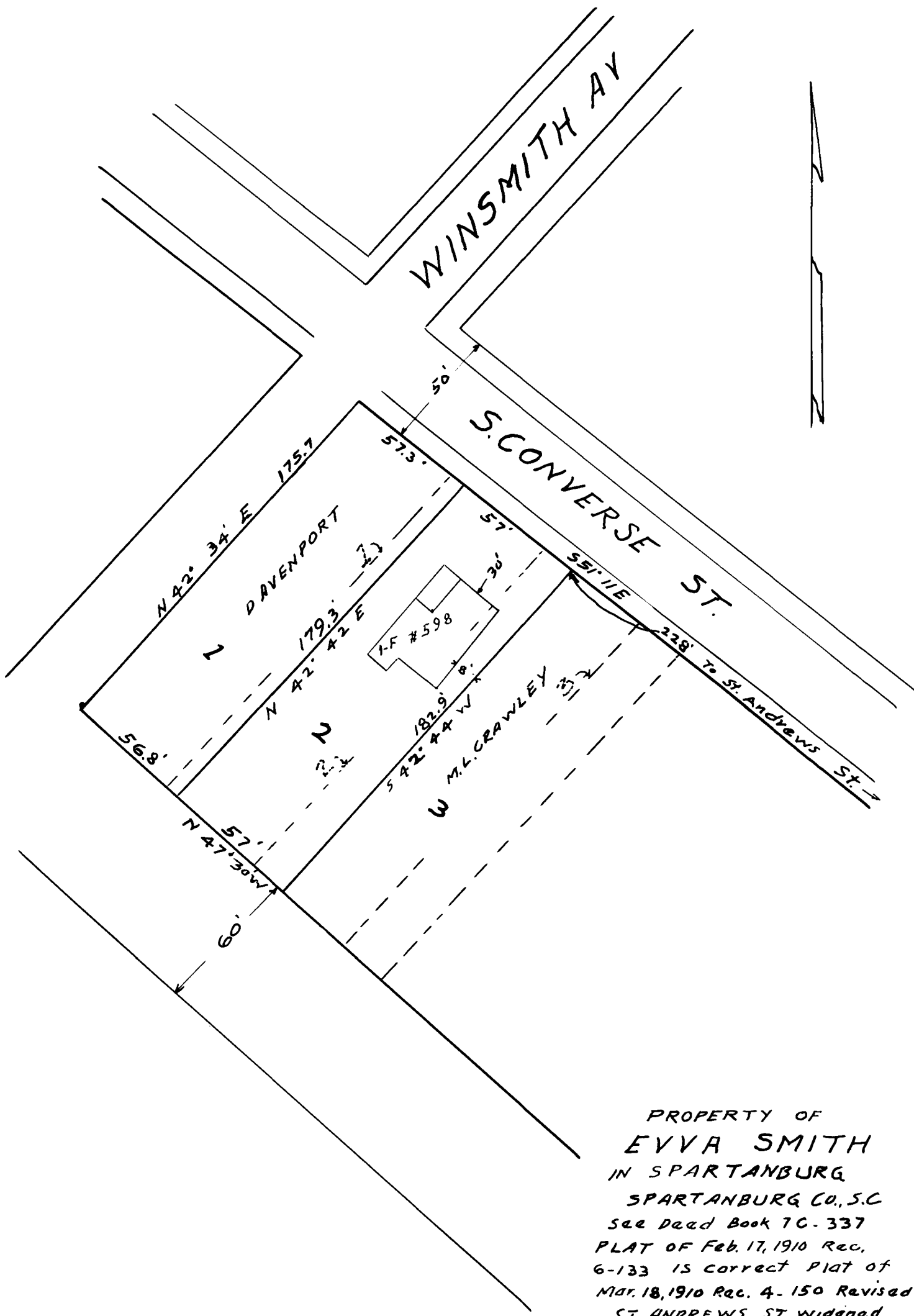


EX PARTE
EVVA SMITH



PROPERTY OF
 EVVA SMITH
 IN SPARTANBURG
 SPARTANBURG CO., S.C
 See Deed Book 7C-337
 PLAT OF Feb. 17, 1910 Rec.
 6-133 IS CORRECT PLAT OF
 MAR. 18, 1910 Rec. 4-150 Revised
 ST. ANDREWS ST. WIDENED
 Scale 1" = 50' Aug. 30, 1934
 W. N. WILLIS, C.E

Registered, Certified & Examined Sept. 21, 1934 at 12:19 P.M.