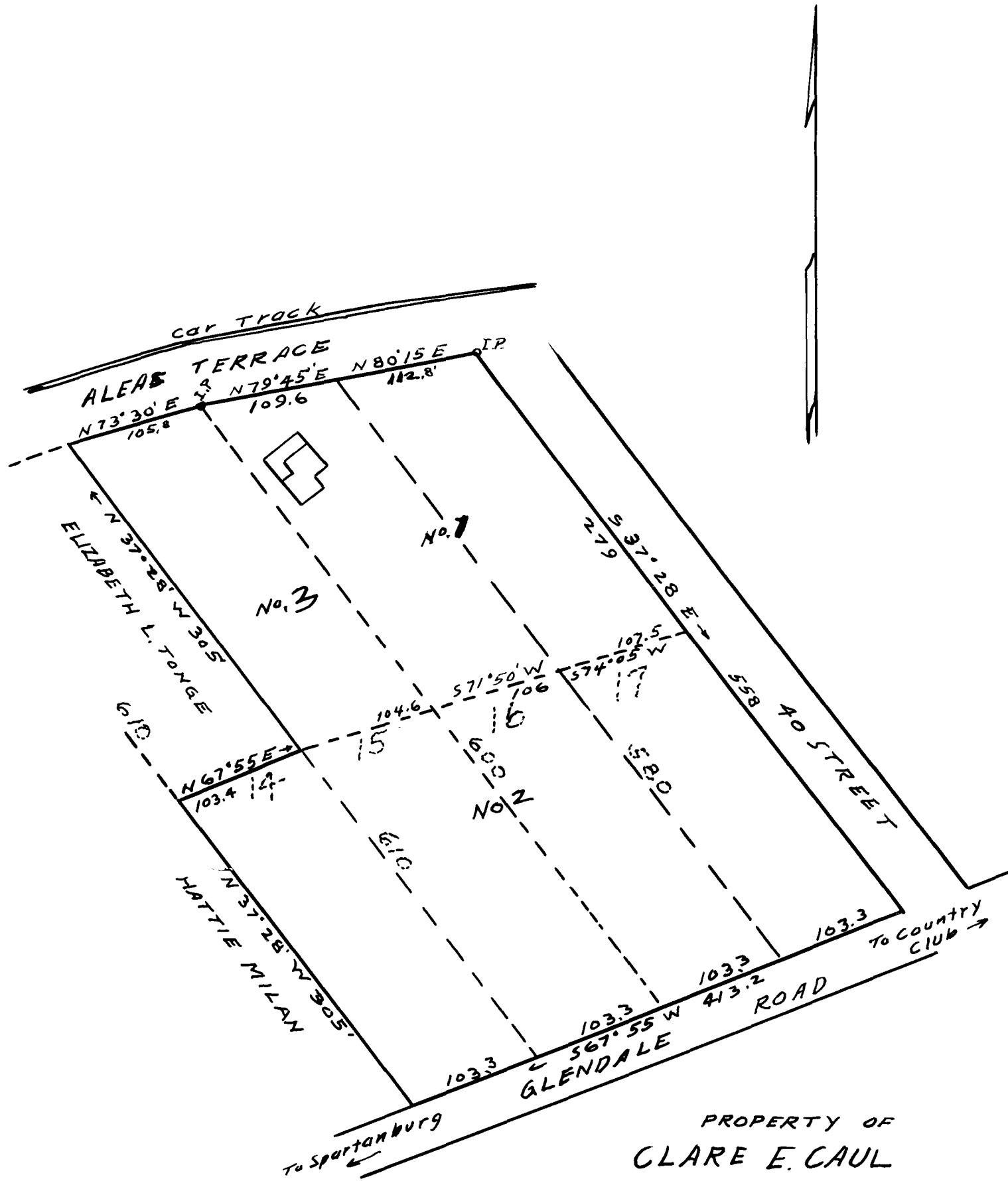


136

EX PARTE
CLARE E. CAUL



PROPERTY OF
CLARE E. CAUL
 NEAR EAST SPARTANBURG
 SPARTANBURG CO. S.C.
 See Deed BK 472 3 TRACTS
 See Plat 3V 450
 Scale 1" = 100' AUG. 30, 1934
 W.N. WILLIS, C.E.

Registered, Certified & Examined Sept. 28, 1934 at 9:58 a.m