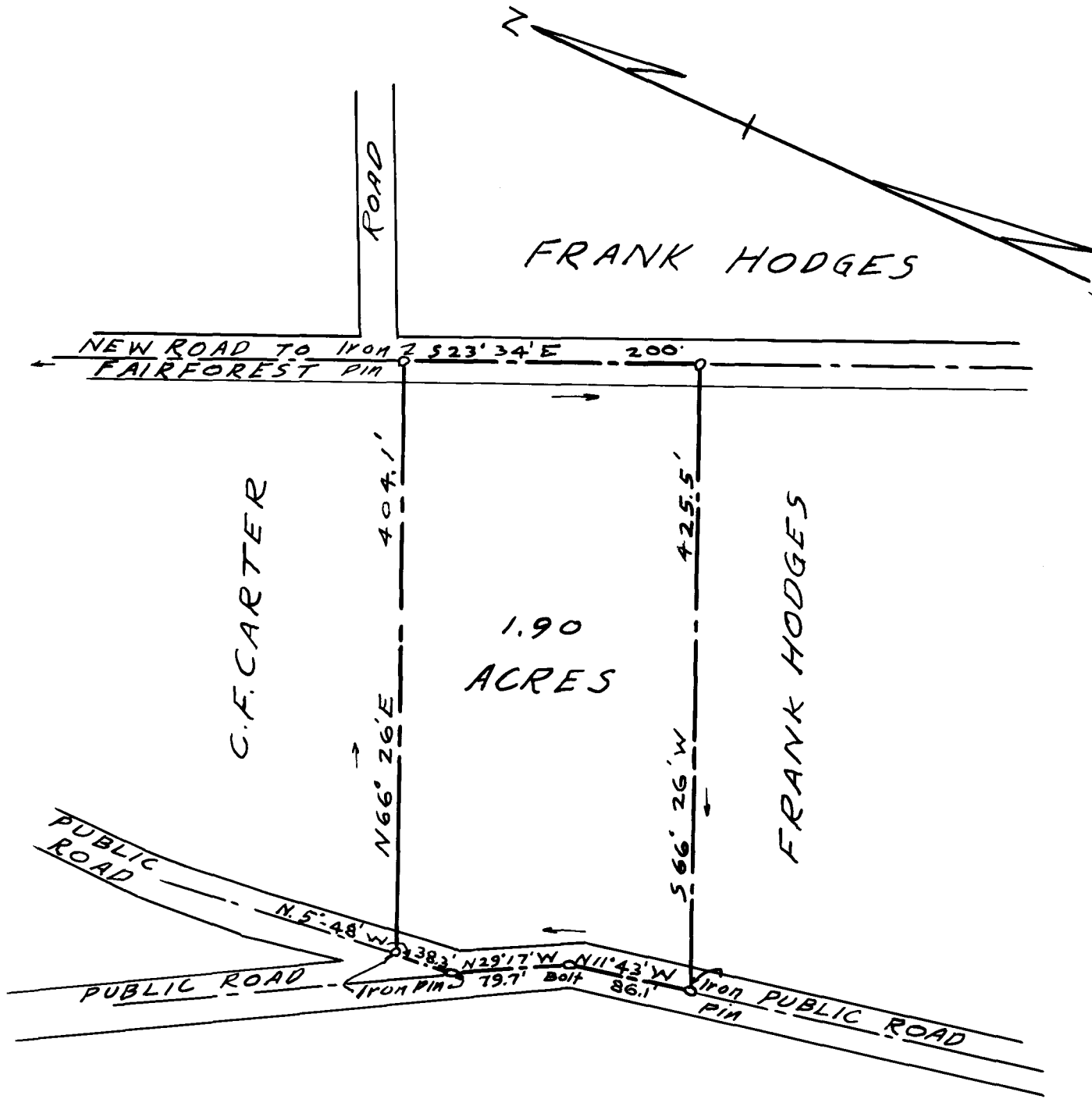


EX PARTE
E. H. SPITZER



PROPERTY OF
E. H. SPITZER

SPARTANBURG
COUNTY
Scale 1" = 100' Oct. 5, 1934

THE HARWOOD BEEBE CO.
CIVIL ENGINEERS
SPARTANBURG, S.C.

Registered, Certified & Examined October 5th 1934 at 3:03 P.M.