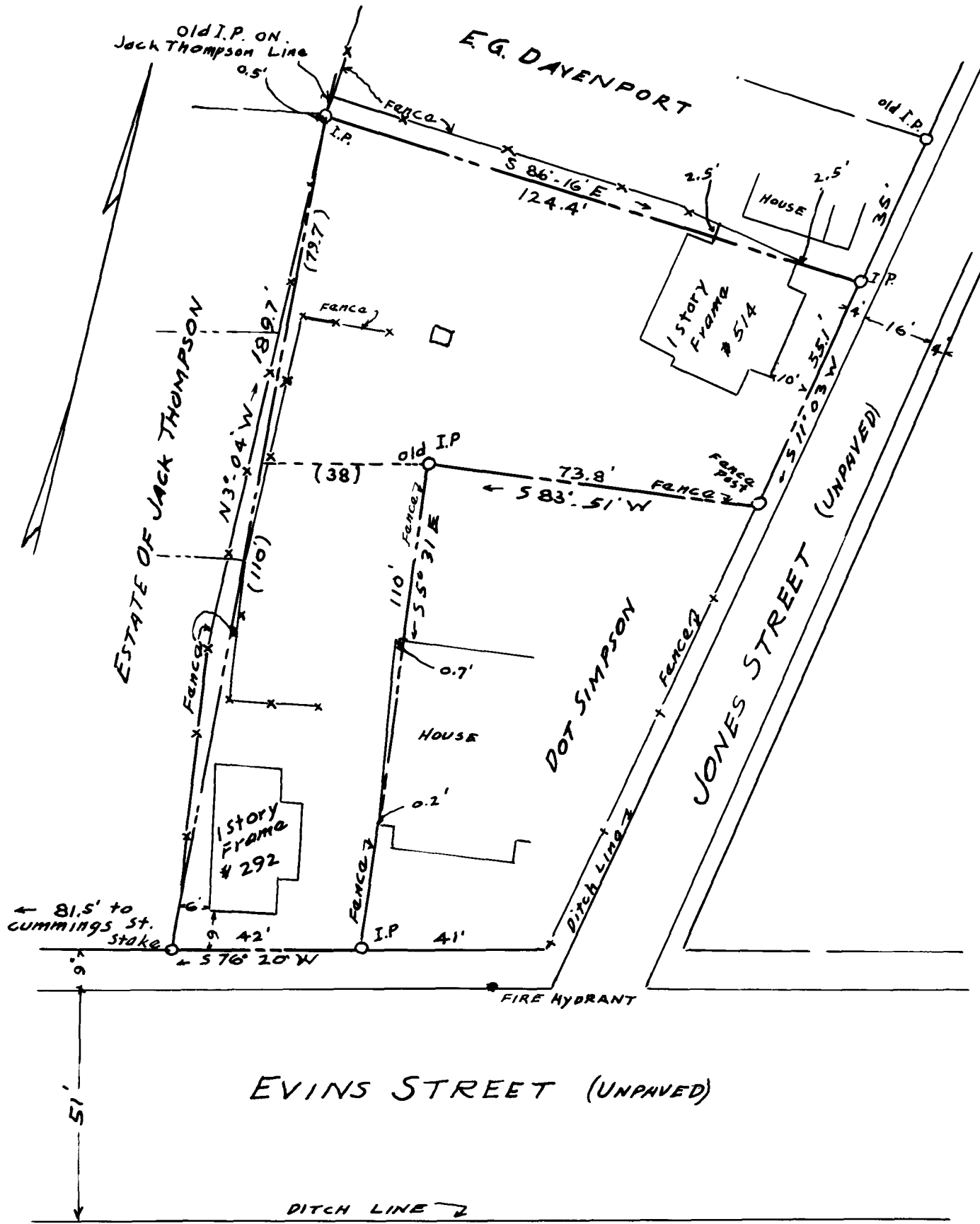


EX PARTE
JOSEPH J. THOMPSON



PROPERTY OF
JOSEPH J. THOMPSON
IN THE CITY OF SPARTANBURG, S.C.

Scale: 1" = 30'

May 23, 1934

The Harwood Beebe Co.
Civil Engineers
Spartanburg, S.C.

Registered, Certified & Examined Oct. 15, 1934 at 2:09 P.M.