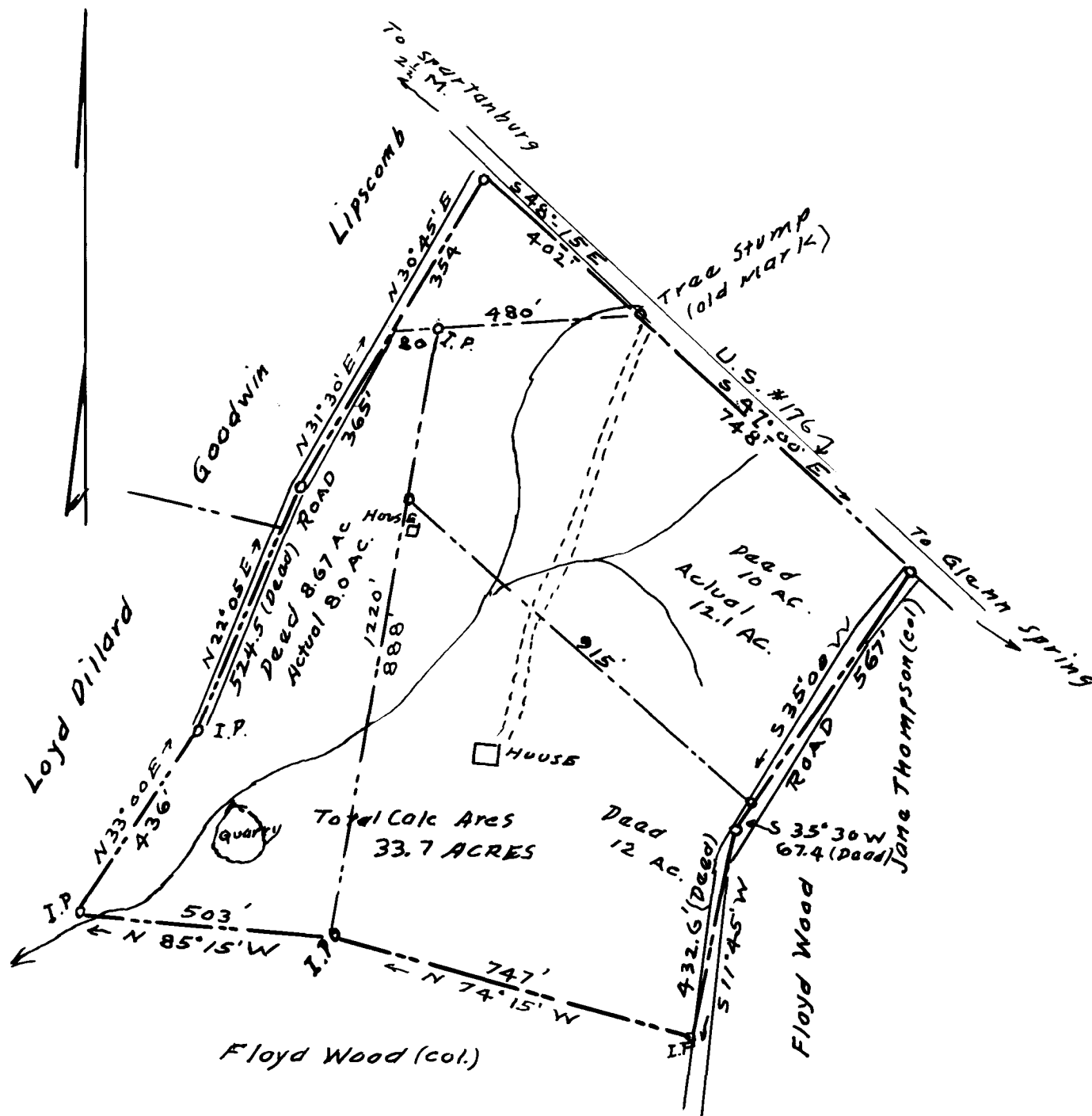


155

EX PARTE  
EDITH W. McLEAN



PROPERTY OF  
EDITH W. McLEAN

NEAR THE CITY OF SPARTANBURG, S. C.

SCALE: 1" = 300'

JAN. 1, 1935

Surveyed in part from existing monuments and  
dead descriptions Interior lines PLOTTED from dead

The Harwood Beabe Co  
Civil Engineers  
Spartanburg, S.C.

Registered, Certified & Examined January 1st 1935 at 2:50 PM