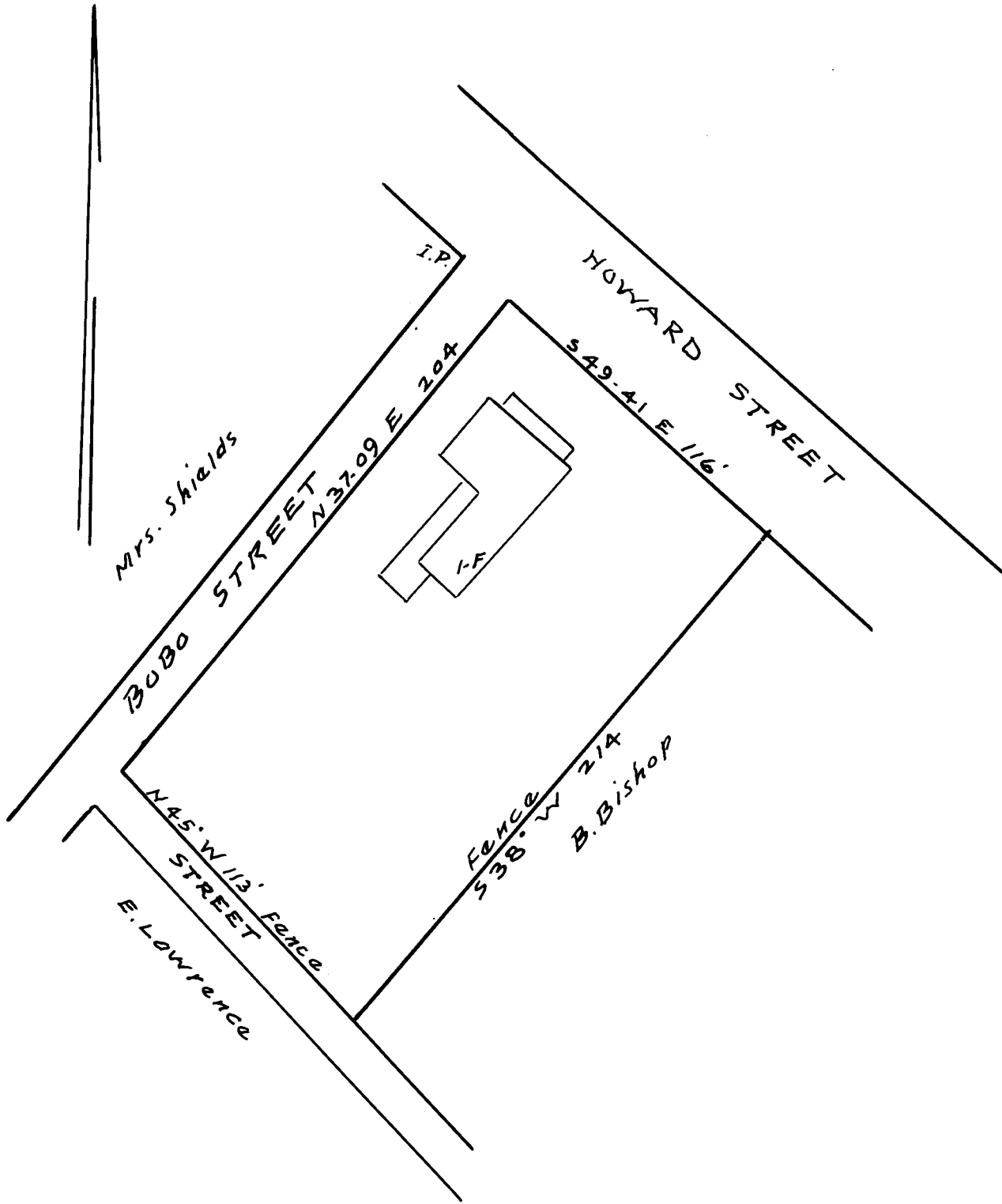


156

EX PARTE
D. E. ROGERS



PROPERTY OF
 D. E. ROGERS
 IN INMAN
 SPARTANBURG CO., S.C.
 scale 1" = 50' Oct. 27-1934
 W. N. Willis, C. E.

Registered, Certified & Examined January 2, 1935 at 4:51 P.M.