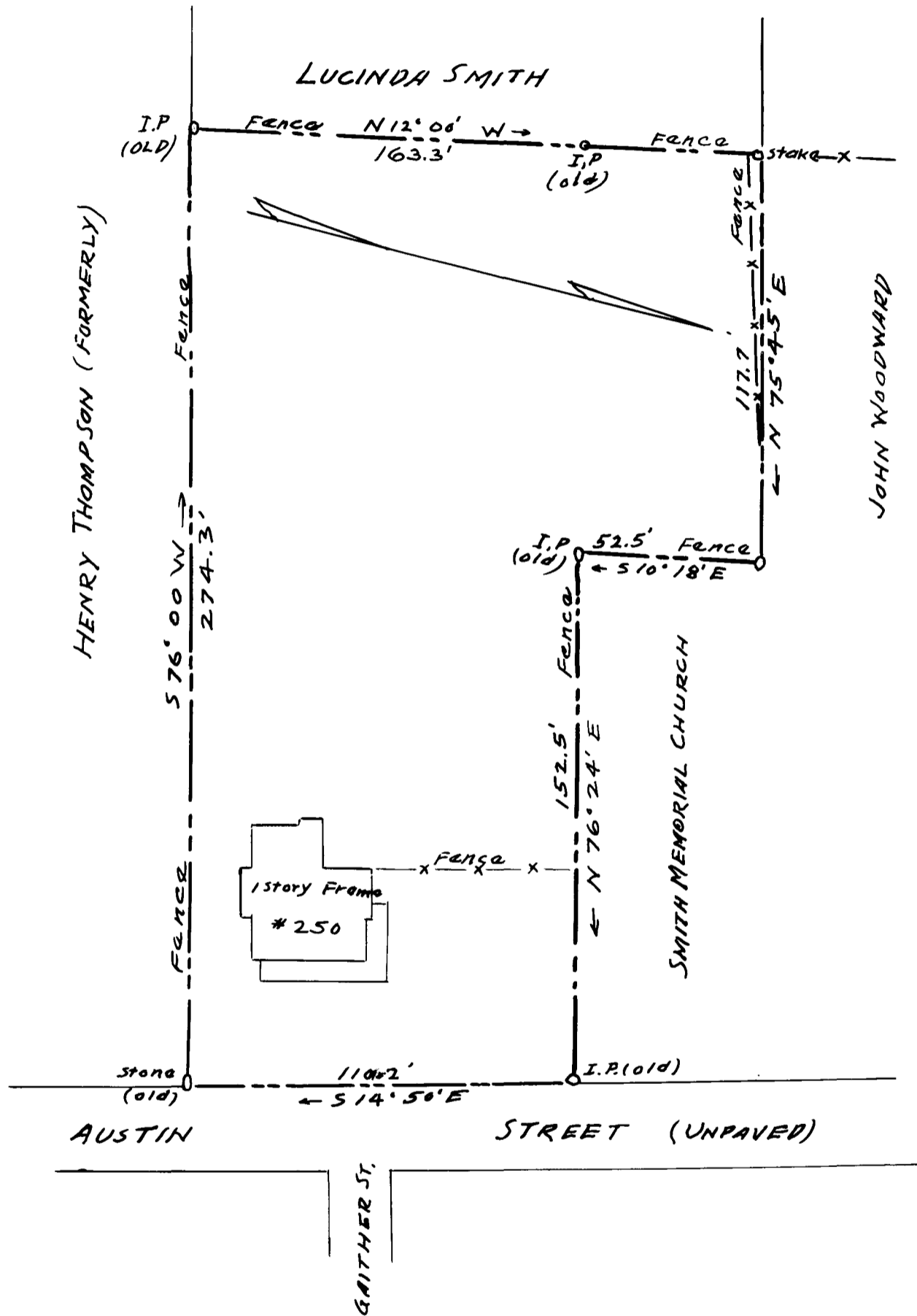


EX PARTE
JOHN D. SMITH



PROPERTY OF
 JOHN D. SMITH
 IN THE CITY OF SPARTANBURG, S.C.
 Scale: 1" = 40' JAN. 15, 1935

The Harwood Beebe Co.
 Civil Engineers
 SPARTANBURG, S.C.

Registered, Certified & Examined January 15, 1935 at 3:35 P.M.