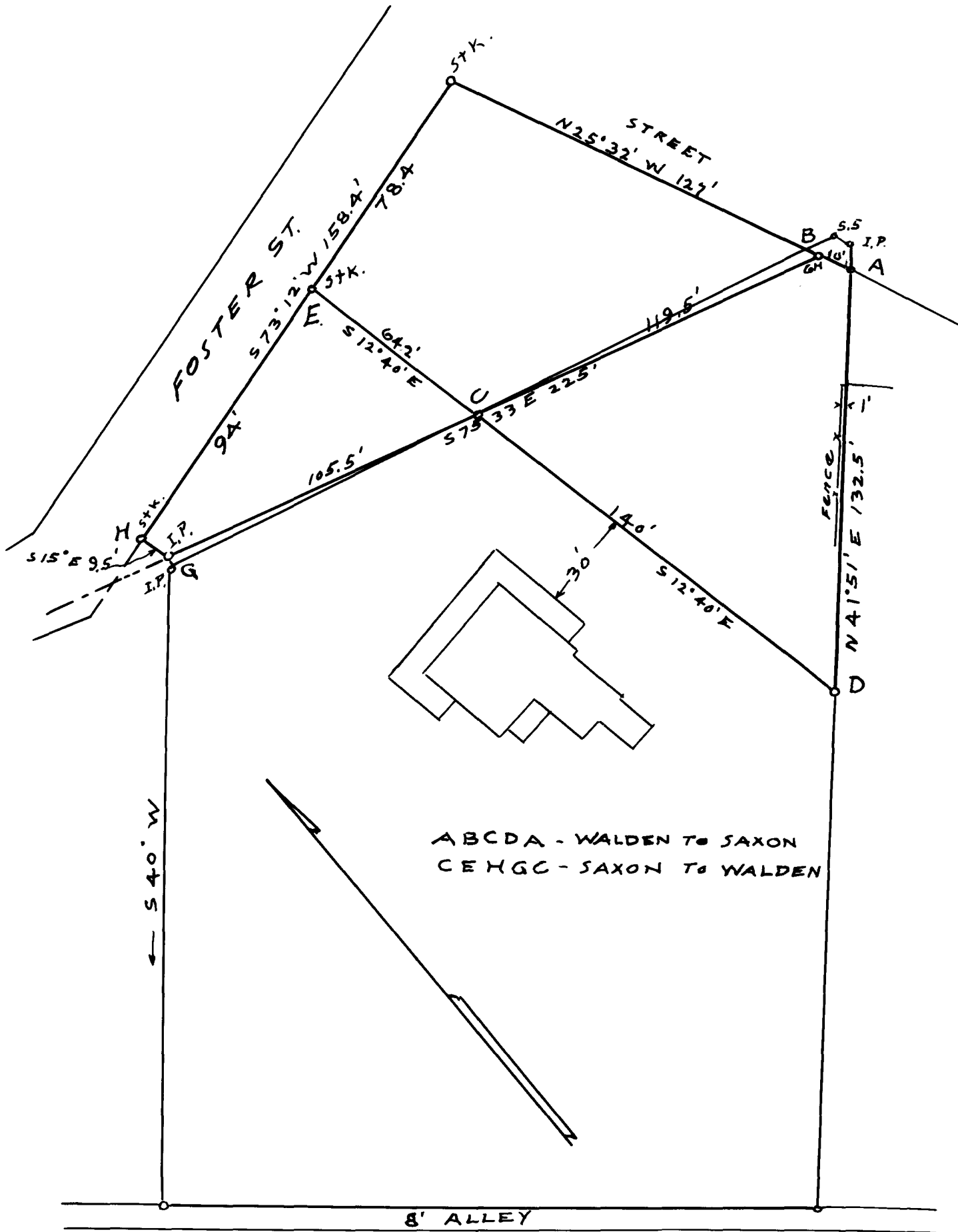


EX PARTE  
SAXON MILL <sup>AND</sup>  
MRS. W. H. WALDEN



ABCD A - WALDEN TO SAXON  
CEHGC - SAXON TO WALDEN

PROPERTY OF  
SAXON MILL  
AND  
MRS. W. H. WALDEN  
SPARTANBURG CO., S.C.  
SCALE 1"=40' MAR. 26, 1927  
W. N. WILLIS, ENGRS.  
SPARTANBURG, S.C.

Registered, Certified & Examined Feby. 22, 1935 at 11:10 A.M.