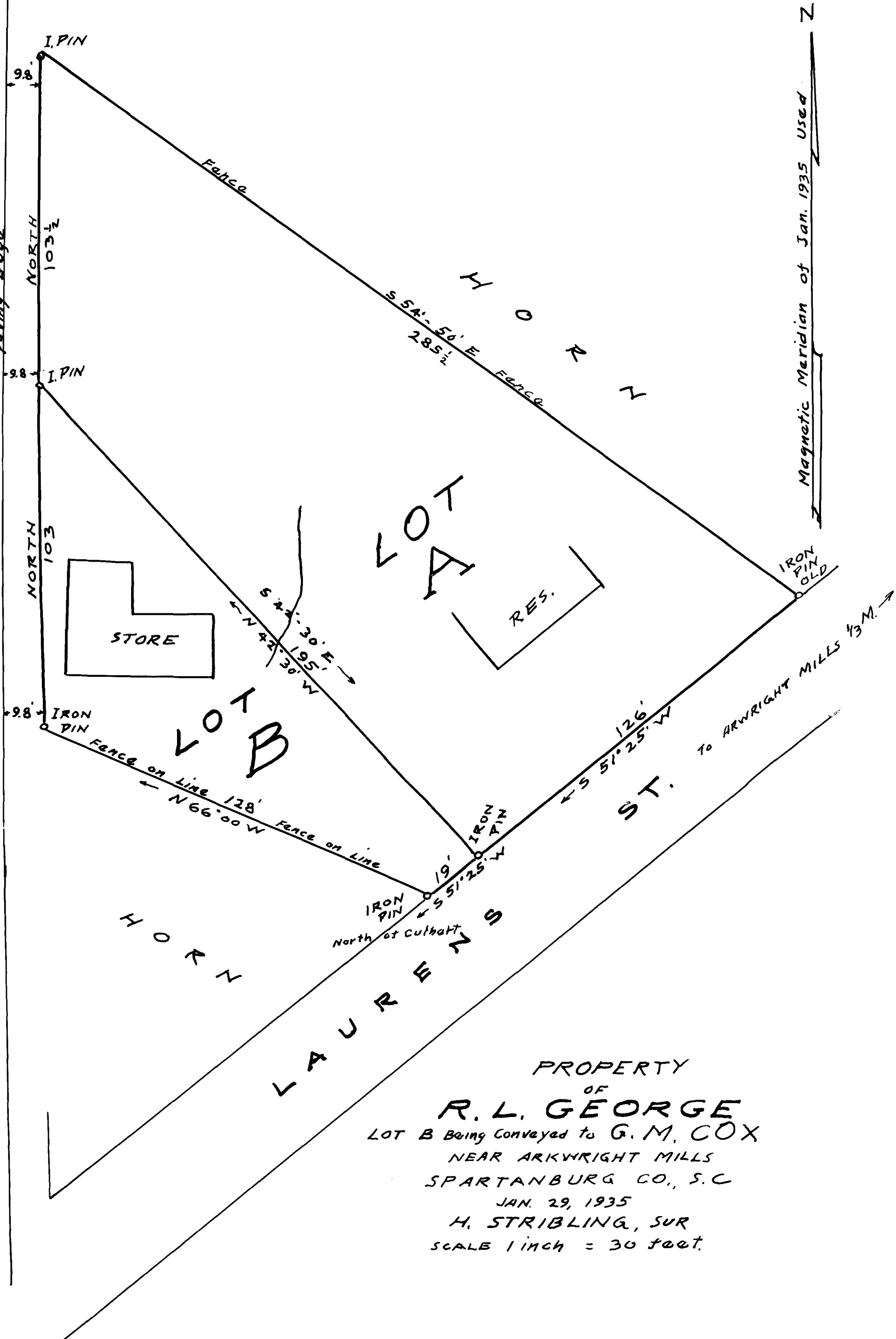


EX PARTE
R. L. GEORGE

LAURENS TO SPARTANBURG HIGHWAY PAVED
PAVING EDGE



PROPERTY
OF
R. L. GEORGE
LOT B Being Conveyed to G. M. COX
NEAR ARKRIGHT MILLS
SPARTANBURG CO., S. C.
JAN. 29, 1935
H. STRIBLING, SUR
SCALE 1 inch = 30 feet.

Registered, Certified & Examined Feby. 22, 1935 at 4:58 P.M.