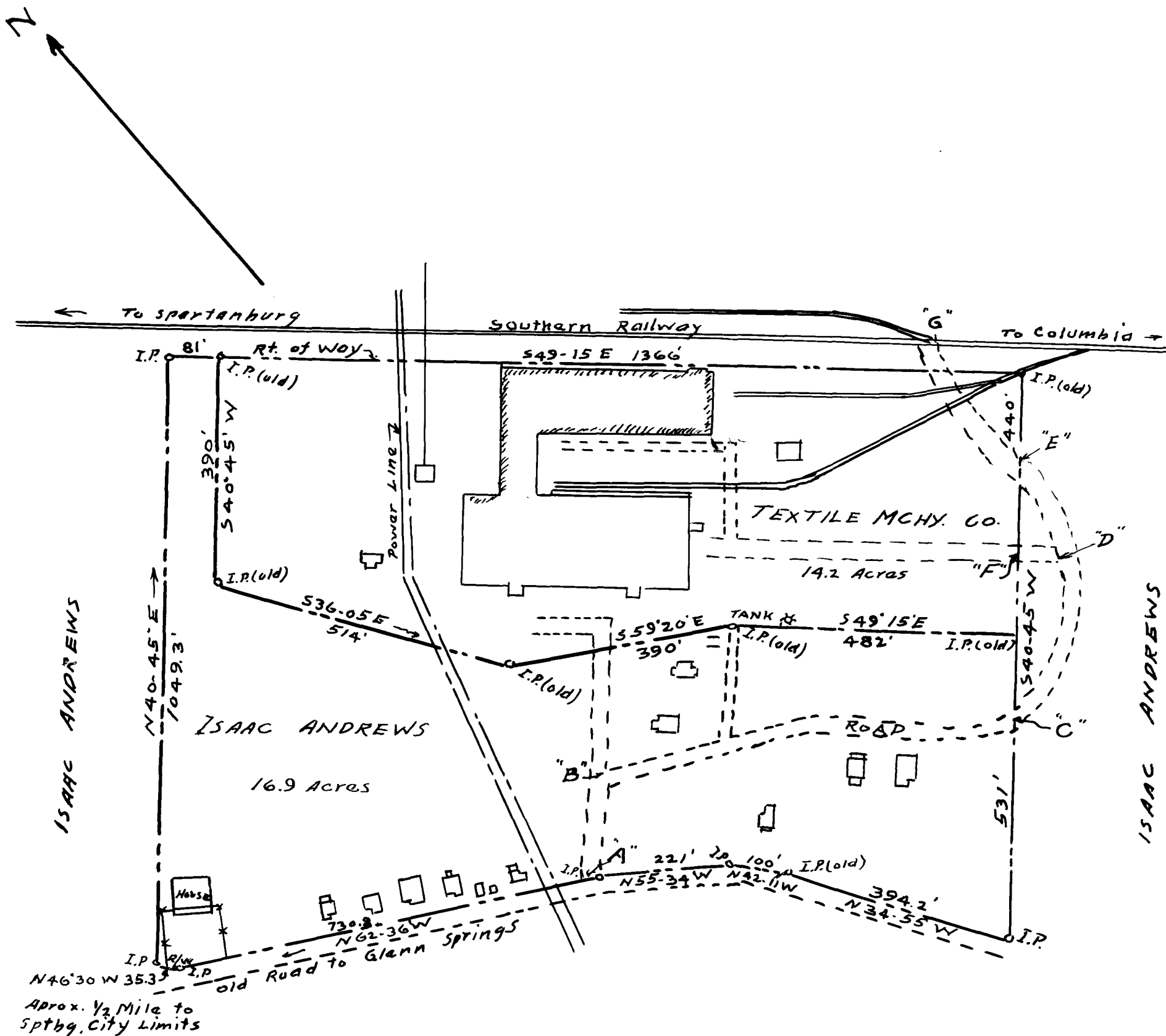


EX PARTE
ISAAC ANDREWS



PROPERTY OF
ISAAC ANDREWS
LOCATED NEAR THE CITY OF
SPARTANBURG, S.C.

Scale 1" = 200'

June 27, 1935

L. E. GRADICK
REG. C. E. & L. S.
Spartanburg, S.C.

Registered, Certified & Examined July 2, 1935 at 1:10 P.M.