

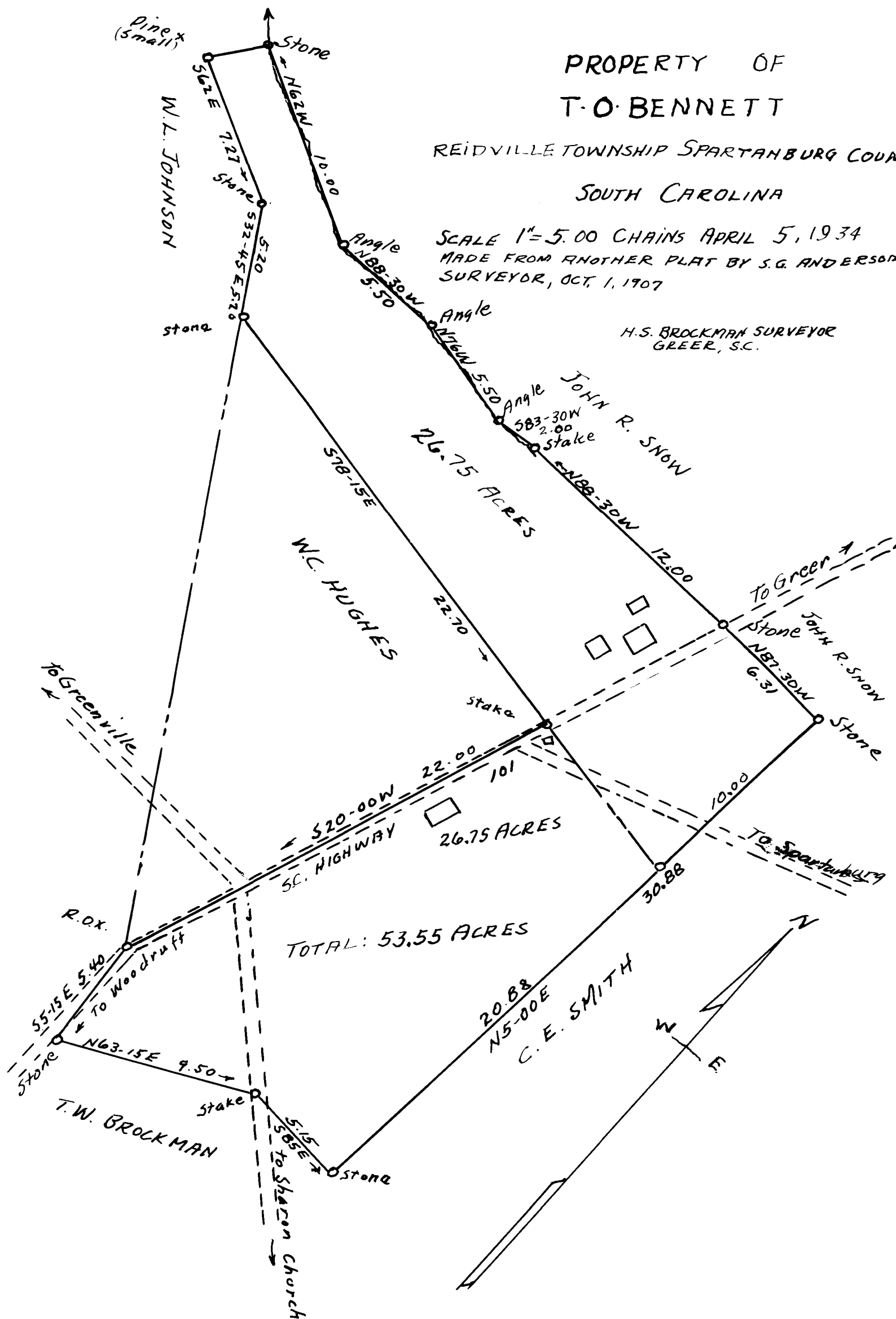
EX PARTE  
T.O. BENNETT

PROPERTY OF  
T.O. BENNETT

REIDVILLE TOWNSHIP SPARTANBURG COUNTY  
SOUTH CAROLINA

SCALE 1"=5.00 CHAINS APRIL 5, 1934  
MADE FROM ANOTHER PLAT BY S.G. ANDERSON  
SURVEYOR, OCT. 1, 1907

H.S. BROCKMAN SURVEYOR  
GREER, S.C.



Registered, certified & Examined October 14<sup>th</sup> 1935 at 12:35 P.M.