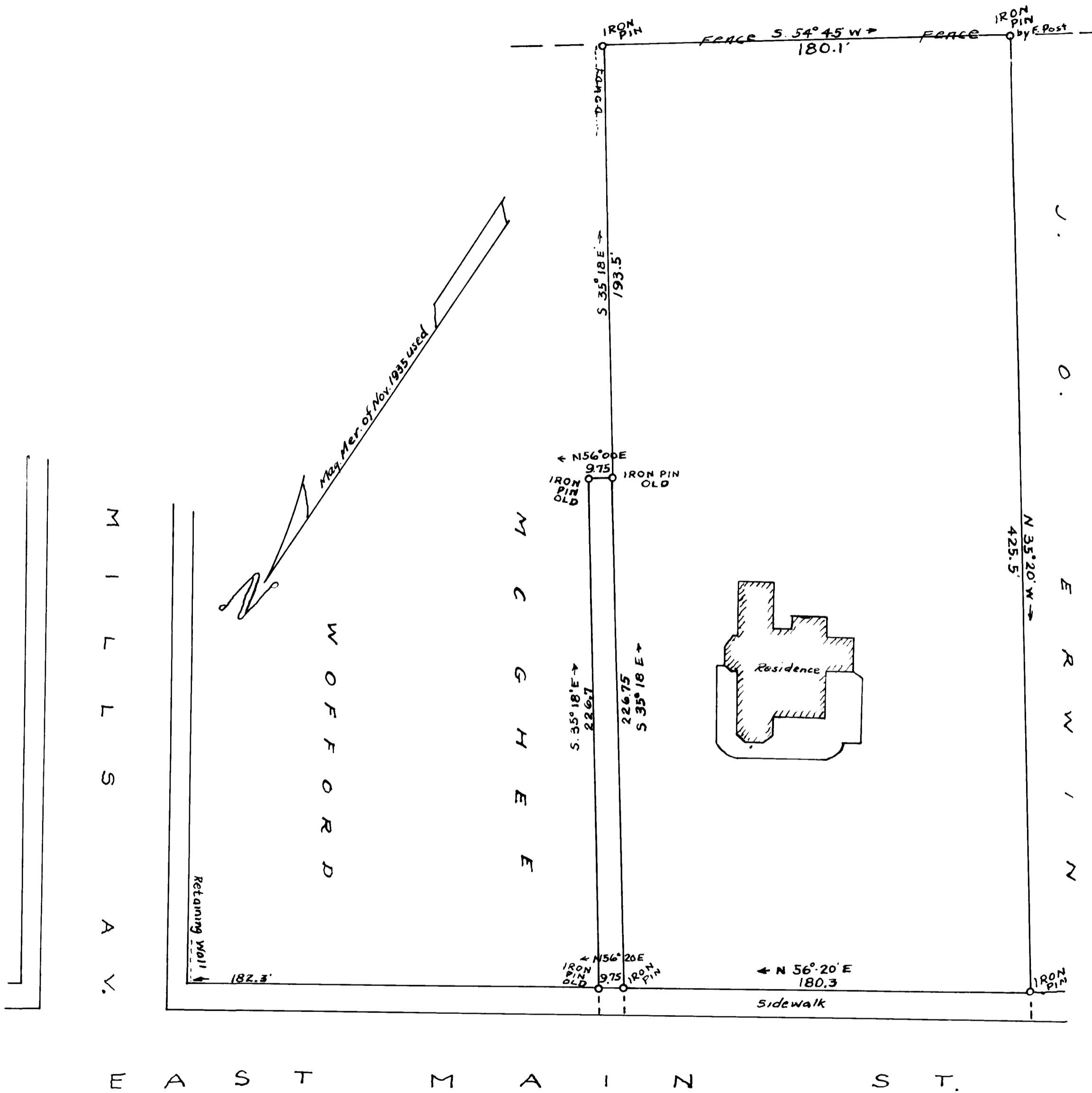


EX PARTE

JESSE & ARTHUR F. CLEVELAND

CONVERSE HEIGHTS



SURVEY
JESSE AND ARTHUR F. CLEVELAND
CITY OF SPARTANBURG, S.C.

Of Former J. T. HARRIS Property
NOV. 14, 1935

scale 1 inch = 40 Feet

H. STRIBLING Sur.

FIELD C. B. YASS

Registered, certified & Examined Nov. 18, 1935 at 11:40 A.M.