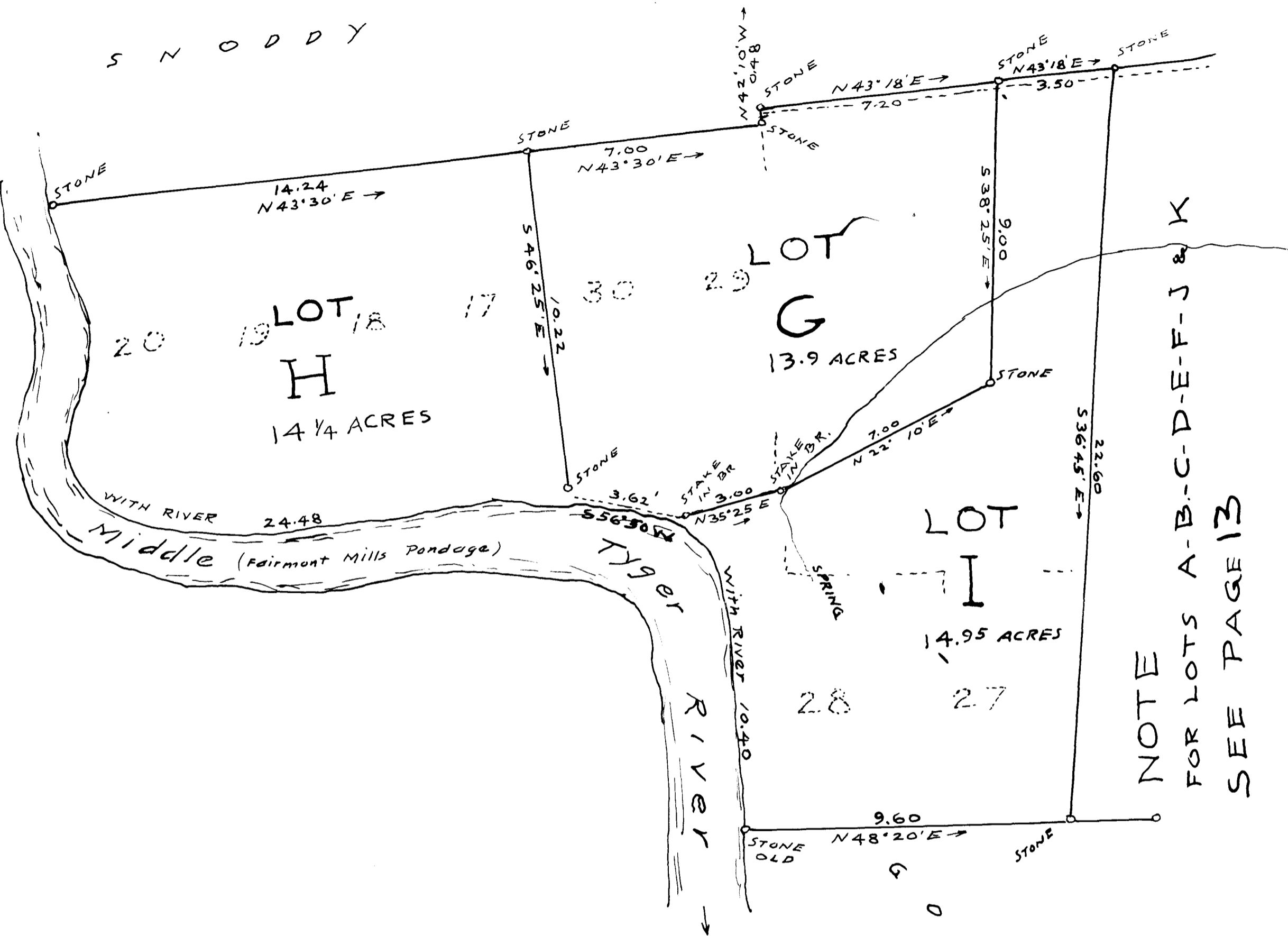


EX PARTE
E. D. JONES EST.

S N O D D Y



NOTE
FOR LOTS A-B-C-D-E-F-J & K
SEE PAGE 13

SUBDIVISION
OF
E. D. JONES ESTATE
2 MILES SOUTH OF FAIRMONT STA.
SPARTANBURG COUNTY, S. C.
NOV. 26, 1935

H. STRIBLING, Eng. & Sur.
Scale 1 inch = 3 Chains
FIELD C. B. VASS

See also plat of Wm. Jones Est. subdivision dated Sep. 19, 1930

W
I
G
H
L
Y
E
S
T.