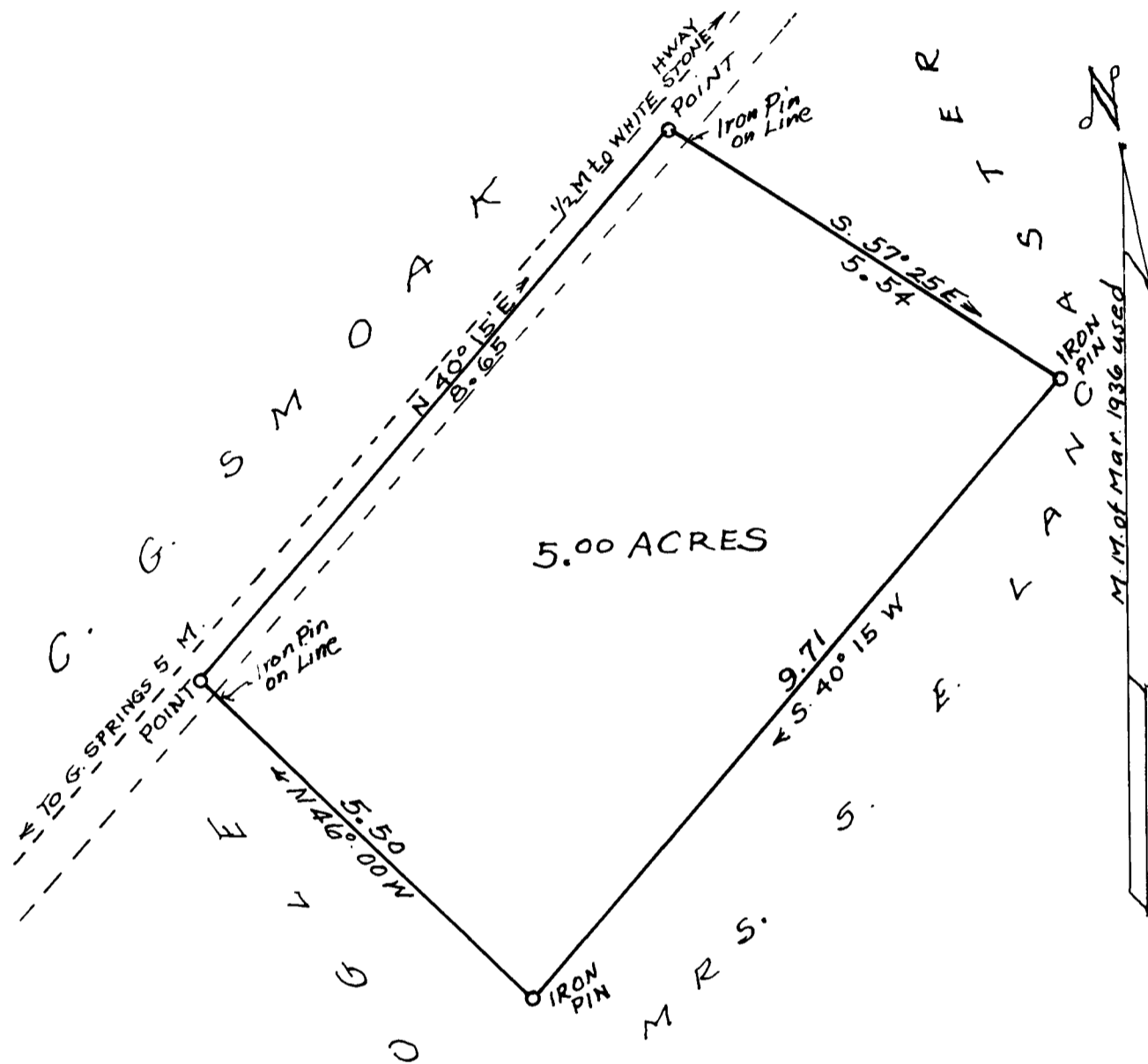


EX PARTE  
WHITE STONE SCH. DIST NO 25



PROPOSED CONVEYANCE  
BY  
MRS S. E. LANCASTER  
TO  
WHITE STONE SCH. DIST NO 25  
SOUTH OF WHITE STONE STA.  
SPARTANBURG CO., SC  
MAR. 31, 1936  
H. STRIBLING SUR  
FIELD C. B. VASS  
Scale 1 inch = 2 chains

Registered, certified & Examined April 3, 1936 at 10:44 A.M