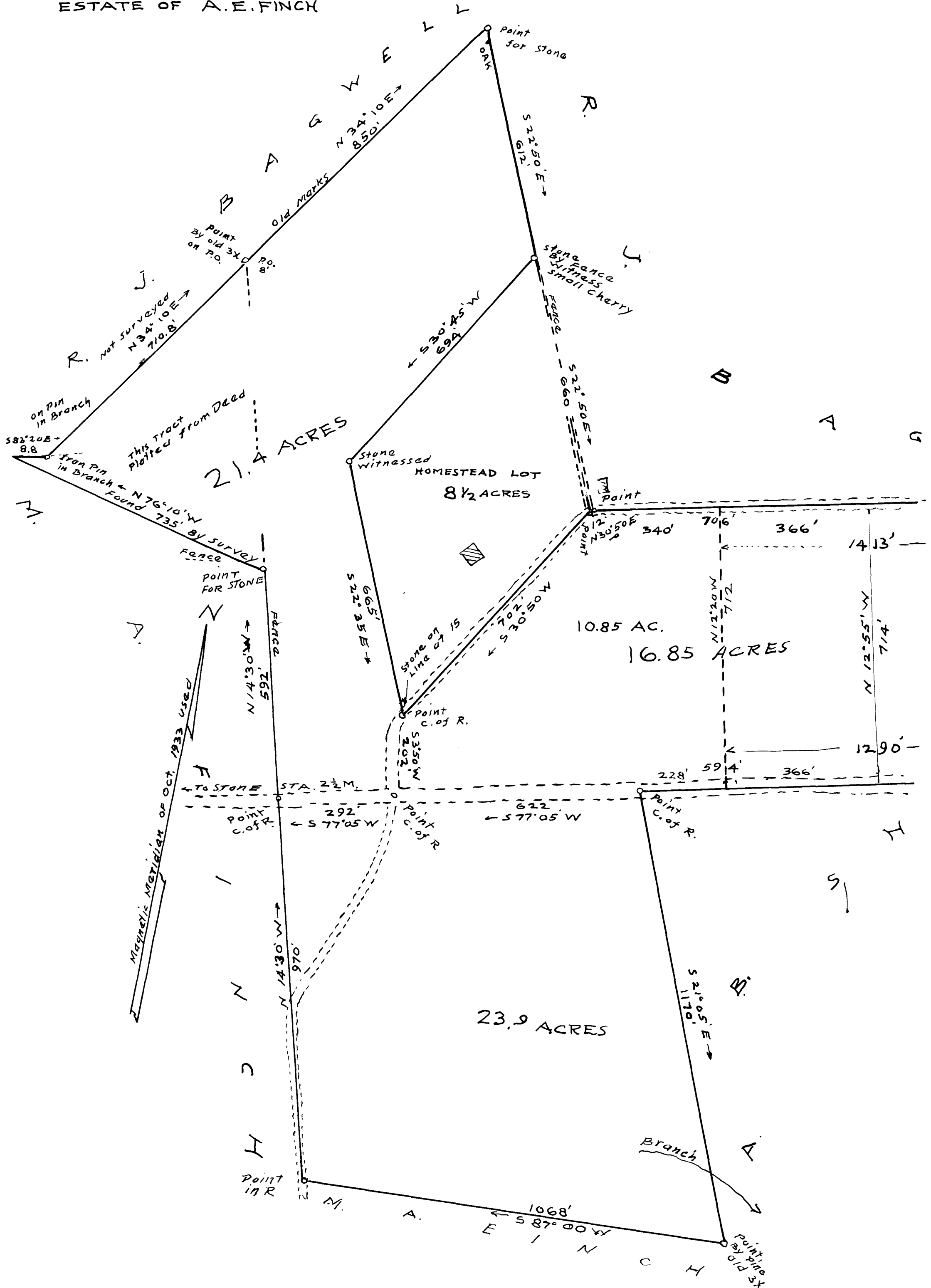
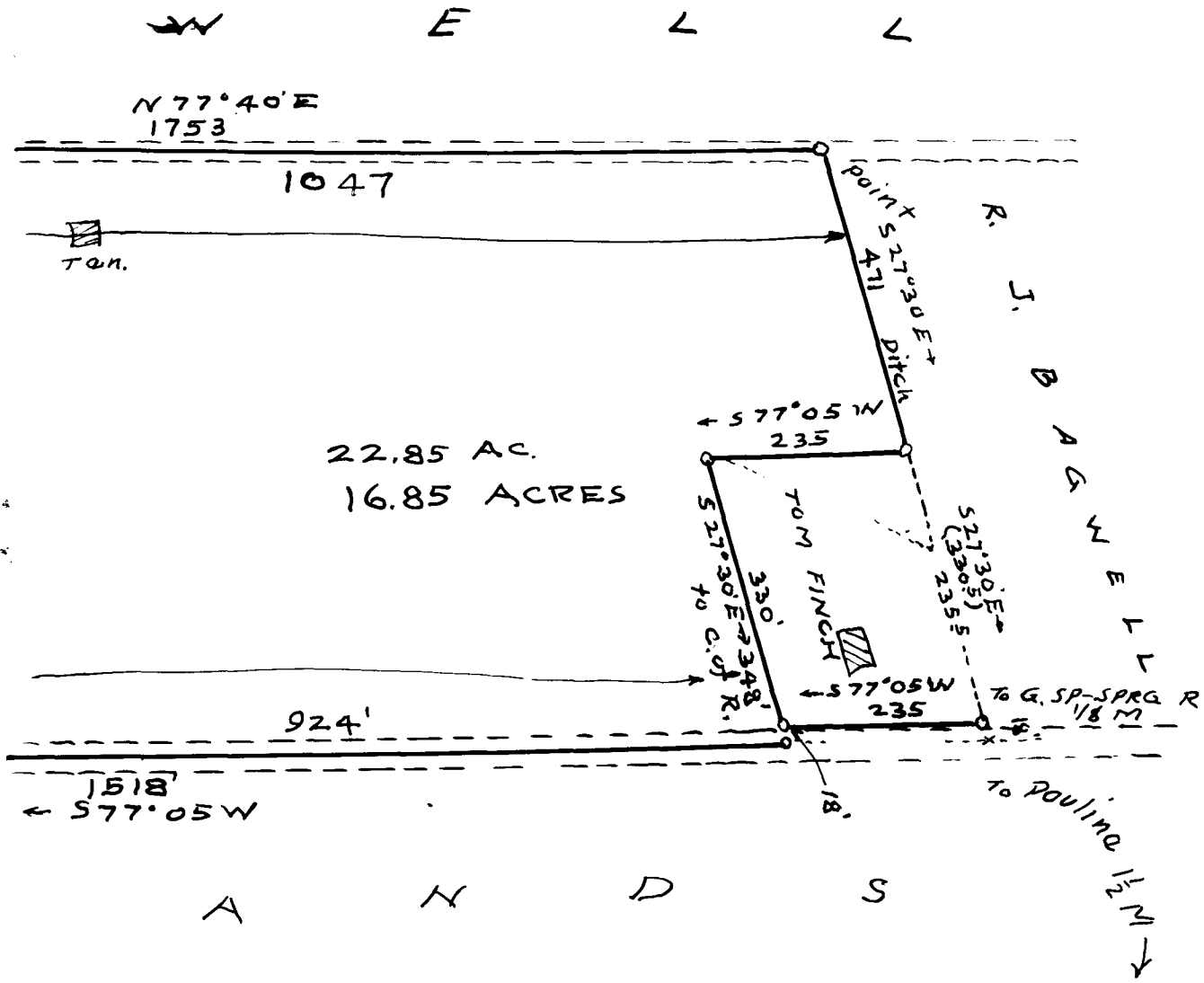


39

EX PARTE
ESTATE OF A.E. FINCH





SURVEY
 ESTATE OF A. E. FINCH
 1 1/2 M. N. OF PAULINE VILLAGE
 SPARTANBURG CO., S.C

OCT. 10, 1933
 H. STRIBLING, Eng. & SUR.
 SCALE 1 INCH = 200 FEET.

Registered, certified & Examined May 23, 1936 at 12:01 P.M.