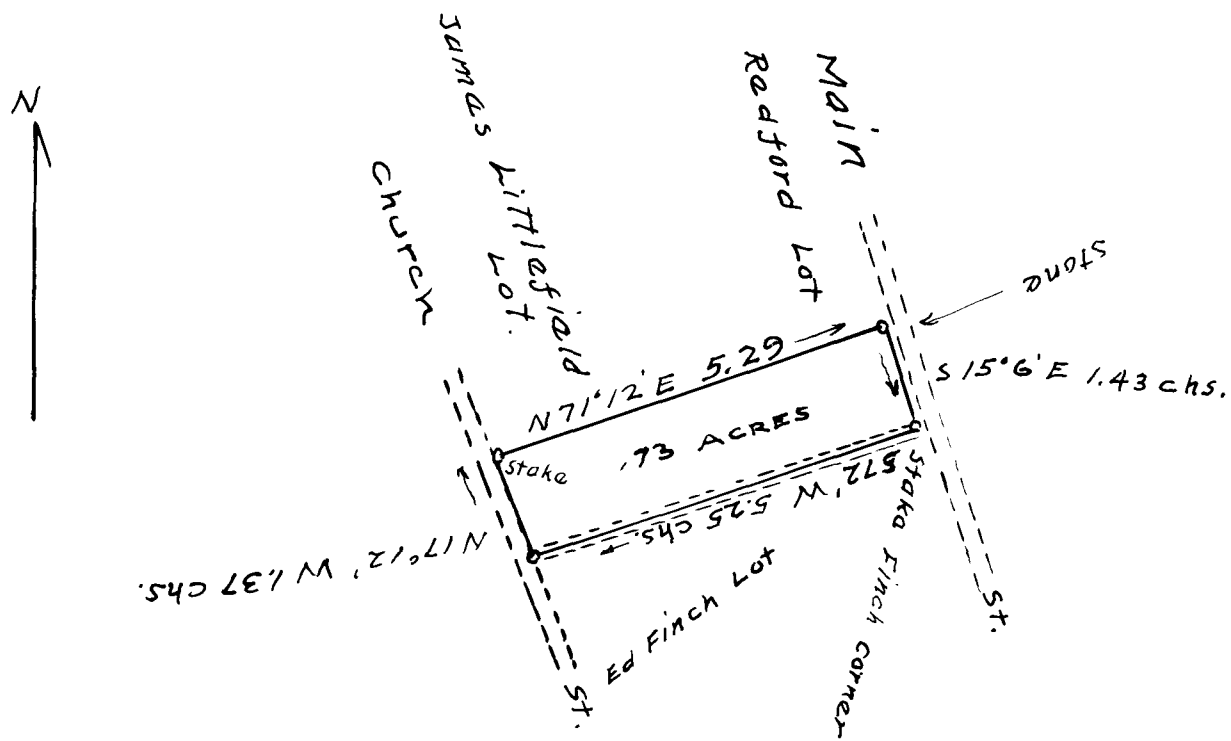


43

EX PARTE  
JAS. M<sup>rs</sup>ELRATH



STATE OF SOUTH CAROLINA  
SPARTANBURG COUNTY

THE ABOVE DRAWING REPRESENTS A LOT OF LAND  
IN THE TOWN OF INMAN, S.C. AND KNOWN AS THE JAS.  
M<sup>rs</sup>ELREATH LOT.

RE-SURVEYED BY ME MARCH 7<sup>th</sup> 1936

M. E. JOHNSON  
SURVEYOR.

Registered, Certified + Examined June 9<sup>th</sup> 1936 at 12:01 P.M.