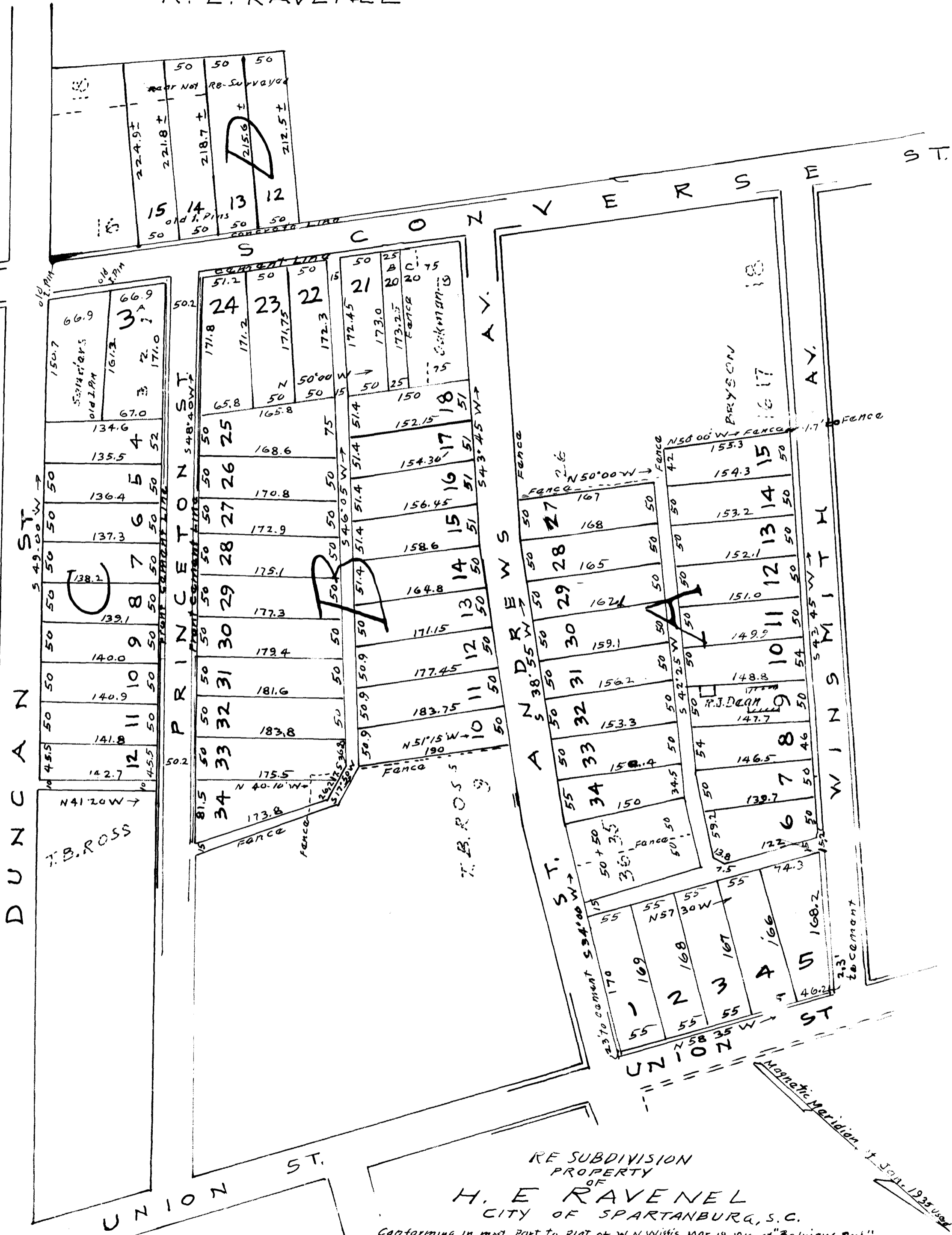


46

EX PARTE
H. E. RAVENEL



RE SUBDIVISION
PROPERTY
OF
H. E. RAVENEL
CITY OF SPARTANBURG, S.C.
Conforming in most part to plat of W. N. Wittis Mar. 18, 1910 of "Belview Sub"
RE-SUBDIVIDED JA. 26, 1935
H. STRIBLING, SUR
Scale 1 Inch = 100 Feet

Registered, Certified & Examined July 16, 1936 at 12:30 P.M.