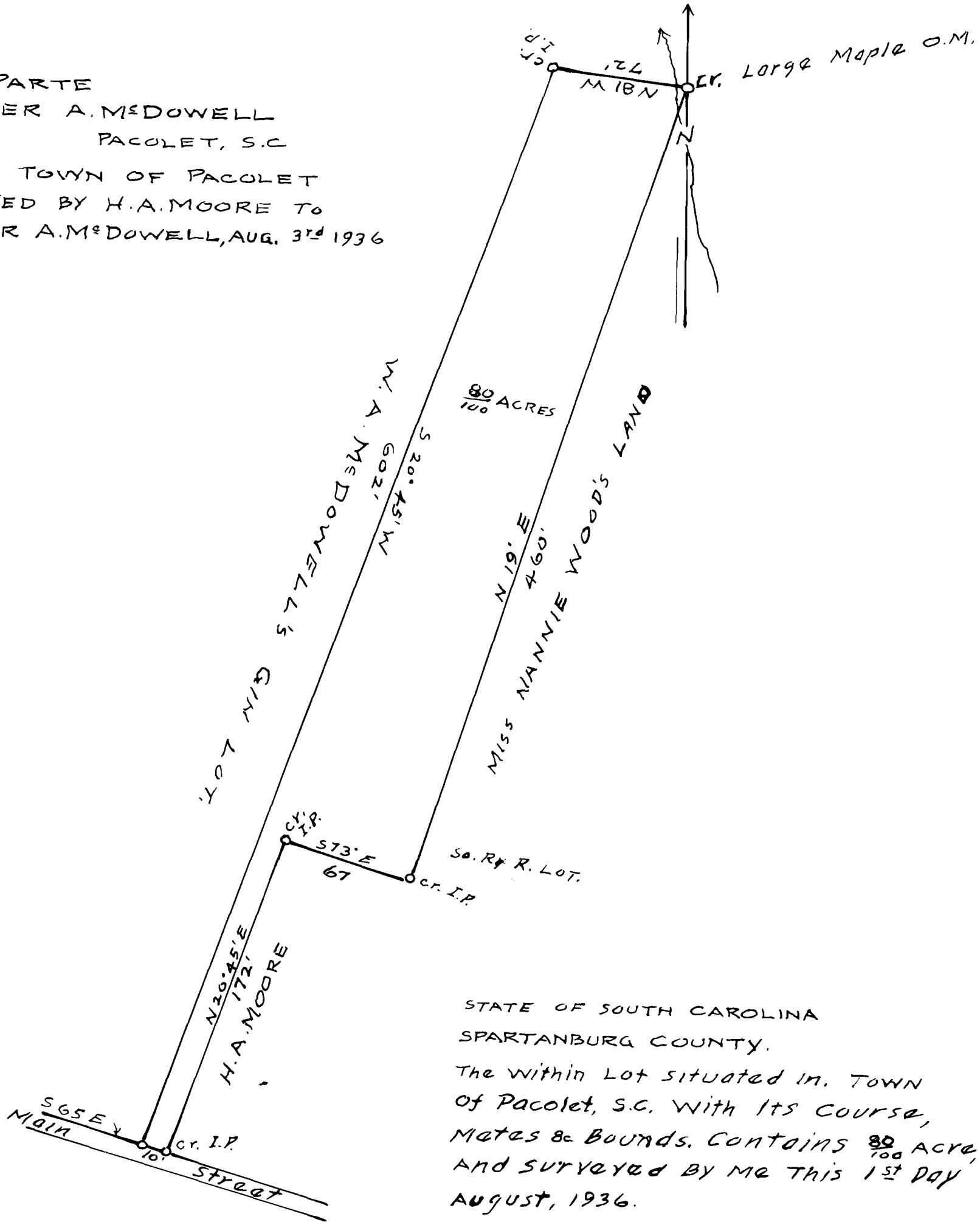


49

EX PARTE
WALTER A. McDOWELL

EX PARTE
WALTER A. McDOWELL
PACOLET, S.C.
LOT IN TOWN OF PACOLET
CONVEYED BY H.A. MOORE TO
WALTER A. McDOWELL, AUG. 3rd 1936



STATE OF SOUTH CAROLINA
SPARTANBURG COUNTY.
The within Lot situated in. TOWN
of Pacolet, S.C. with its course,
Mates & Bounds. Contains $\frac{80}{100}$ Acre,
And surveyed by me this 1st Day
August, 1936.
W.J. Wells. (SURVY'R.)
Scale 60' Per 1"

Registered, Certified + Examined August 5, 1936 at 9:10 a.m.