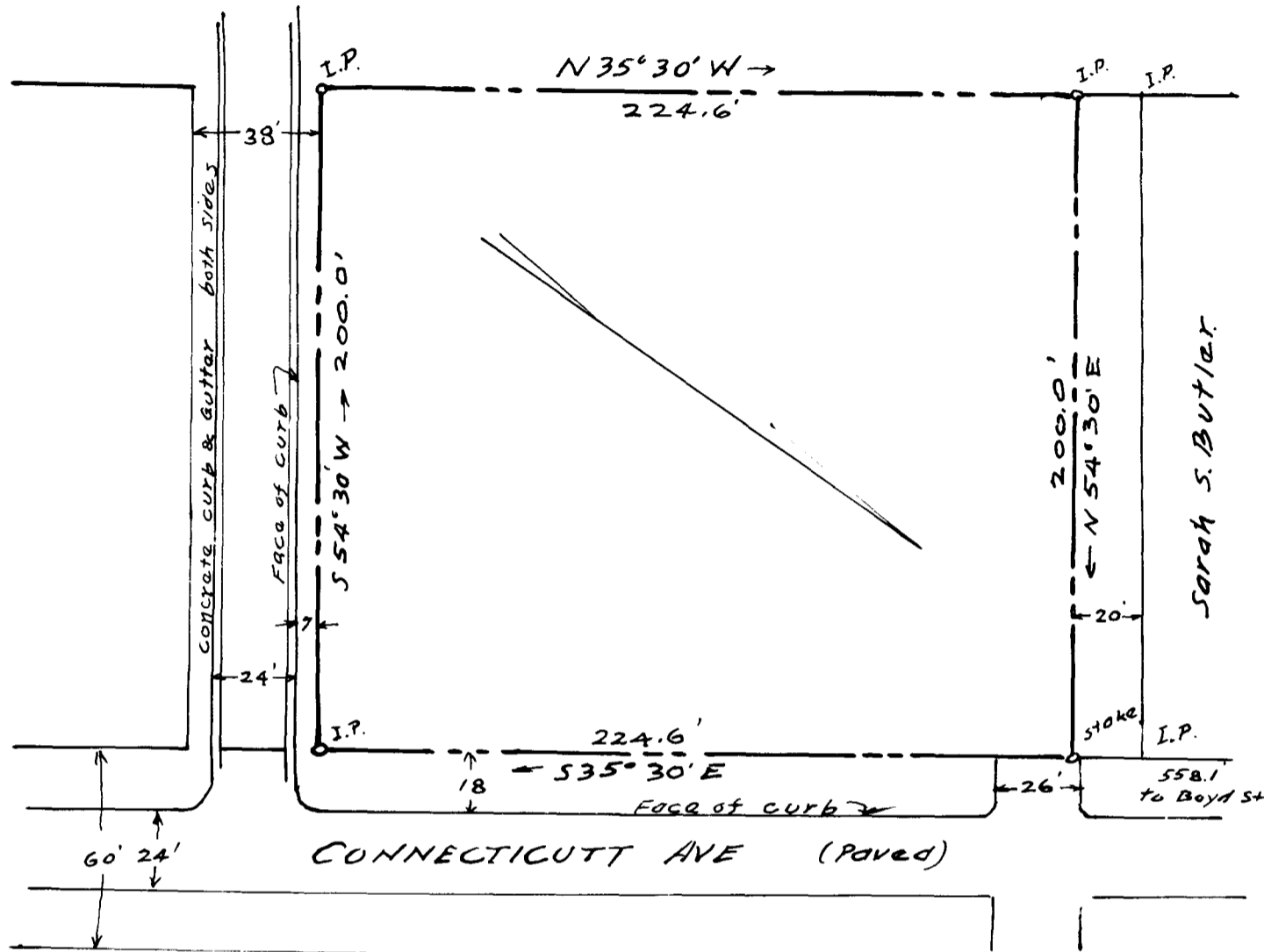


EX PARTE  
ELOISE M. WATT

J.H. Hill



PROPERTY OF  
ELOISE M. WATT  
NEAR THE CITY OF SPARTANBURG, S.C.  
SCALE 1"=50'      MAY 5, 1936

The Harwood Deaba Co.  
Civil Engineers  
Spartanburg, S.C.

Registered, Certified & Examined Sept. 16, 1936 at 9:16 a.m.