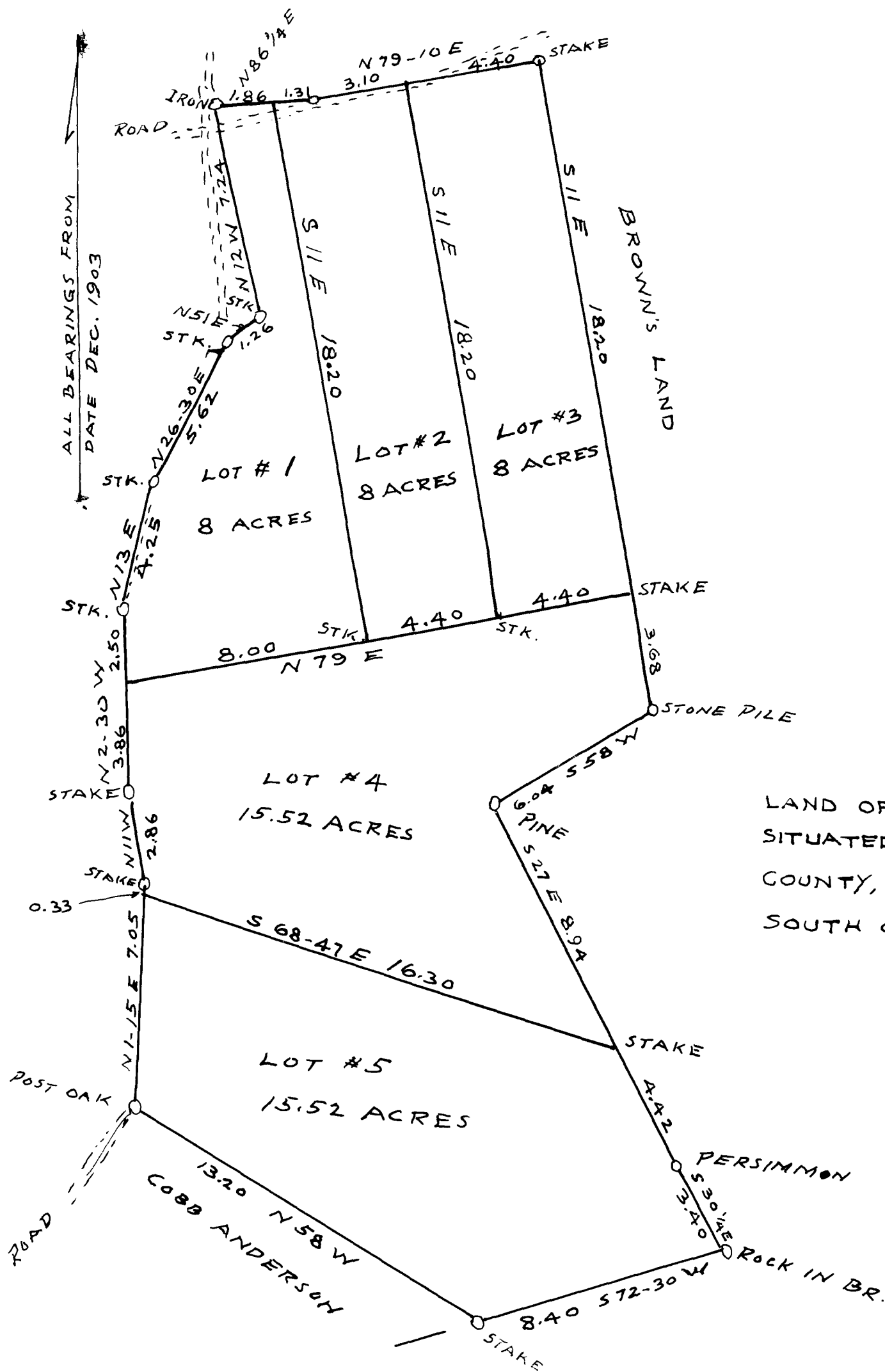


EX PARTE
L. E. CARTER



LAND OF L. E. CARTER
SITUATED IN SPARTANBURG
COUNTY, S. C. ABOUT 2 MILES
SOUTH OF GLENDALE

PLAT MADE FROM SURVEY BY LADSHAW &
LADSHAW, ENGRS. IN DEC. 1903. PLOTTED AND
SUBDIVIDED BY J. W. CUNNINGHAM.

SCALE: ONE INCH = 4 CH.

SURVEYOR

AUGUST 1936

Registered, certified & Examined Sept. 26, 1936 at 9:45 a.m.