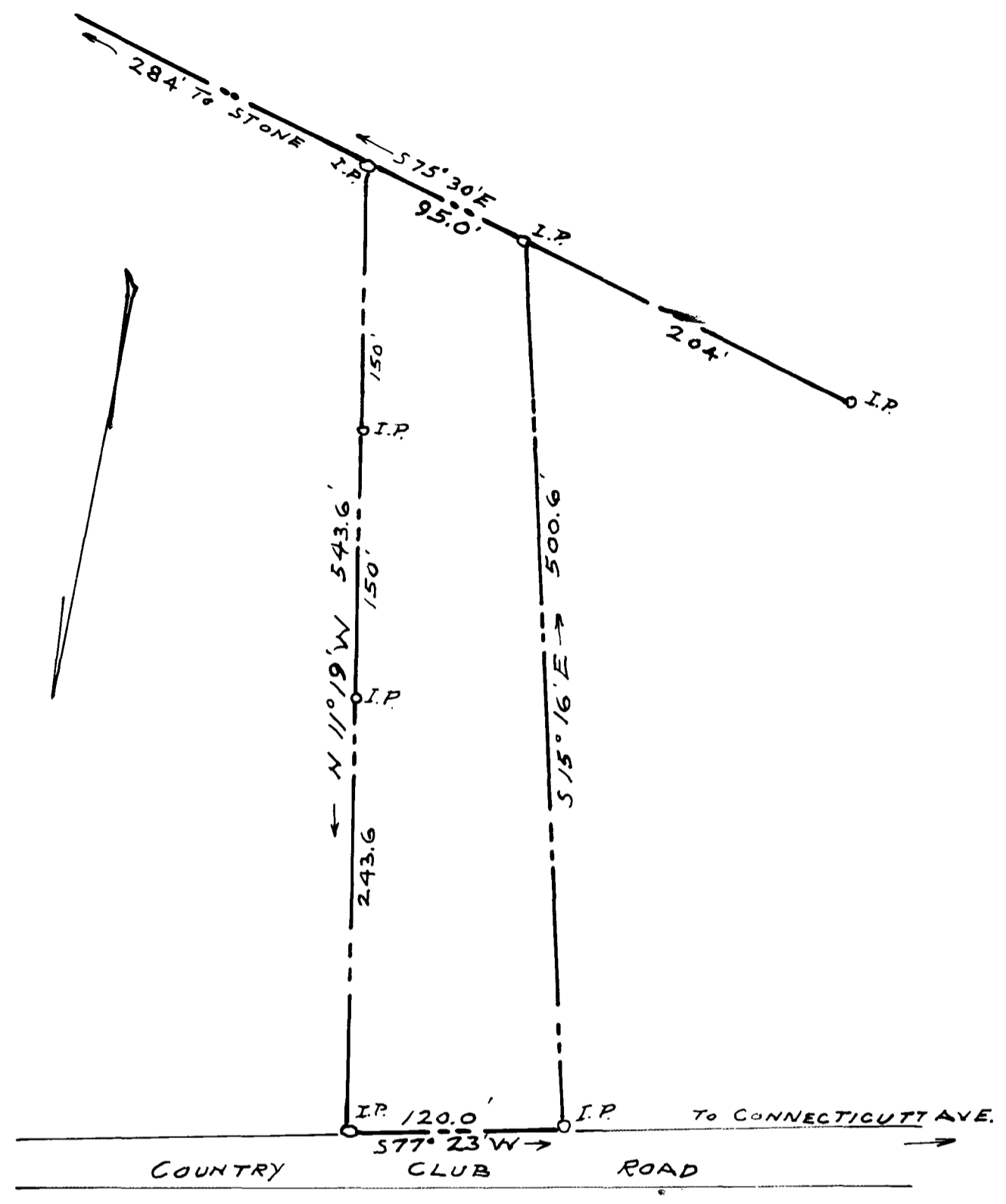


61

EX PARTE
ANNETTE B. HEINITSH



PROPERTY OF
 MRS. ANNETTE B. HEINITSH
 "WOODBURN HILLS"
 NEAR THE CITY OF SPARTANBURG, S.C.
 SCALE: 1" = 80' OCT. 8, 1936

The Harwood Beebe Co.
 Civil Engineers
 Spartanburg, S.C.

Registered, Certified + Examined October 13th 1936 at 12:07 P.M.