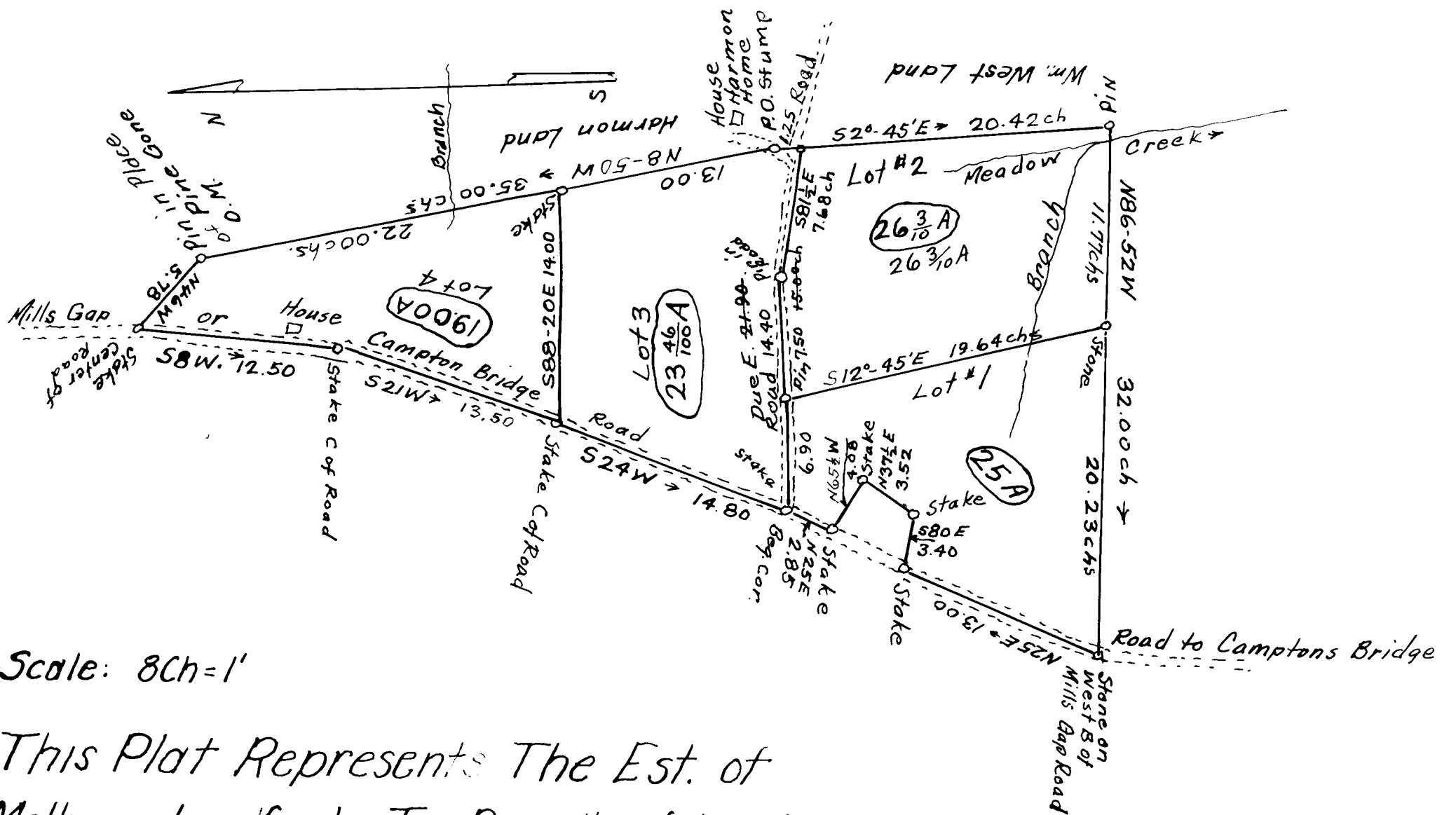


EX PARTE  
MELBORN LANFORD EST.

66



Scale: 8Ch=1'

This Plat Represents The Est. of  
 Melborn Lanford's Two Parcels of Land: Lots 1 & 2 on  
 One Deed And Lots 3 & 4 on Another Deed.  
 Surveyed and Lotted by me The 26<sup>th</sup> & 27 days of Aug.  
 A.D. 1936  
 D.N. Loftis, Surveyor

Surveyed at Request of Joe West Administrator  
 Above Land, <sup>Lots 1 & 2</sup> are in Inman School District, Campobello Town-ship, Spartandurg County, Sou. Car.  
 About 2 Miles North of Inman, S.C. Lots 1 & 2 in Inman<sup>2</sup> & Lots 3 & 4 in Gramling School Districts

Registered, Certified & Examined Nov. 6-1936 at 10:20 a.m