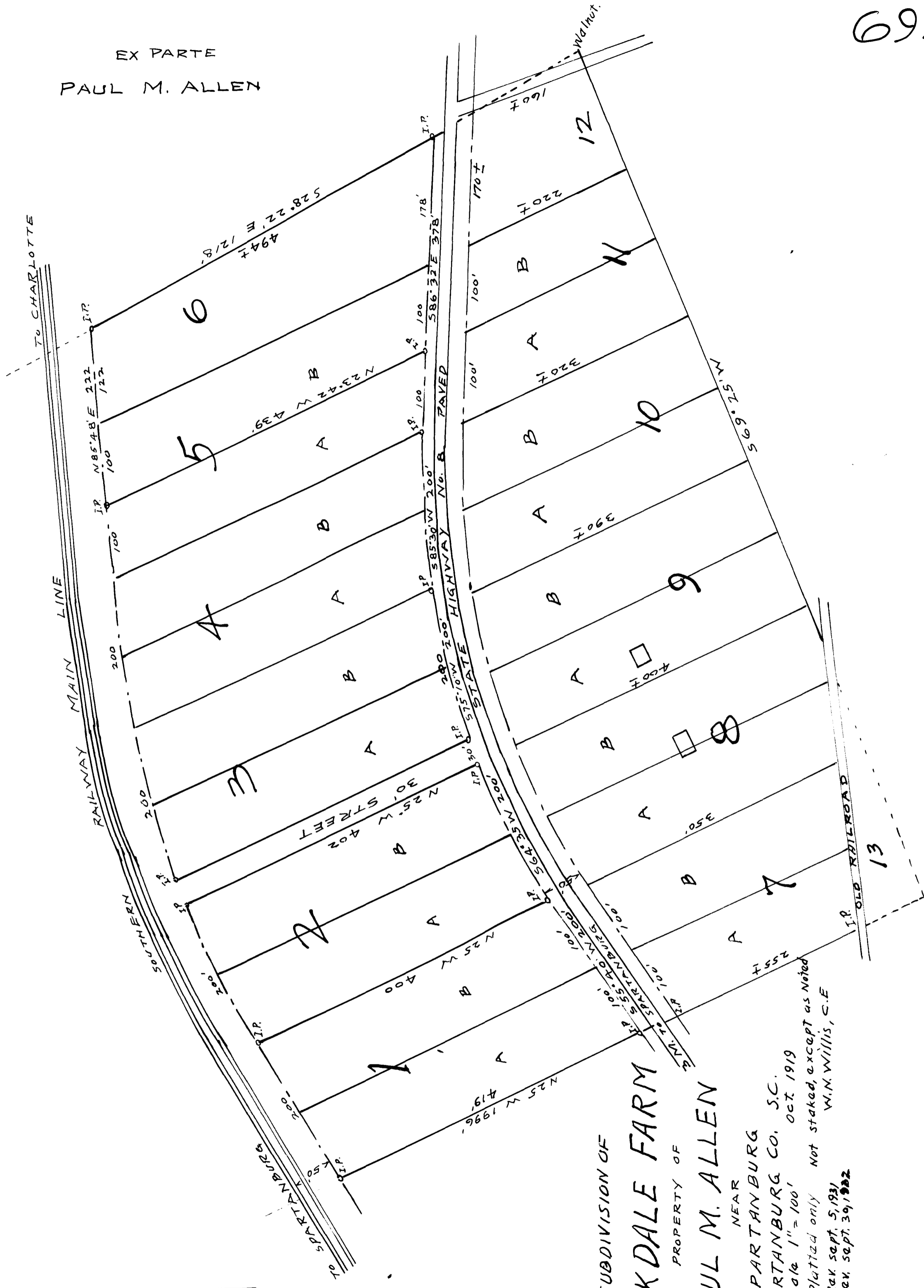


EX PARTE
PAUL M. ALLEN



SUBDIVISION OF
OAKDALE FARM

PROPERTY OF

PAUL M. ALLEN

NEAR

SPARTANBURG

SPARTANBURG CO. S.C.

scale 1" = 100' Oct. 1919

Platted only Not staked, except as noted

Rev. Sept. 5, 1931

Rev. Sept. 30, 1932

W.M. Willis, C.E.

Registered, certified + Examined Nov. 21, 1936 at 9:56 a. m.