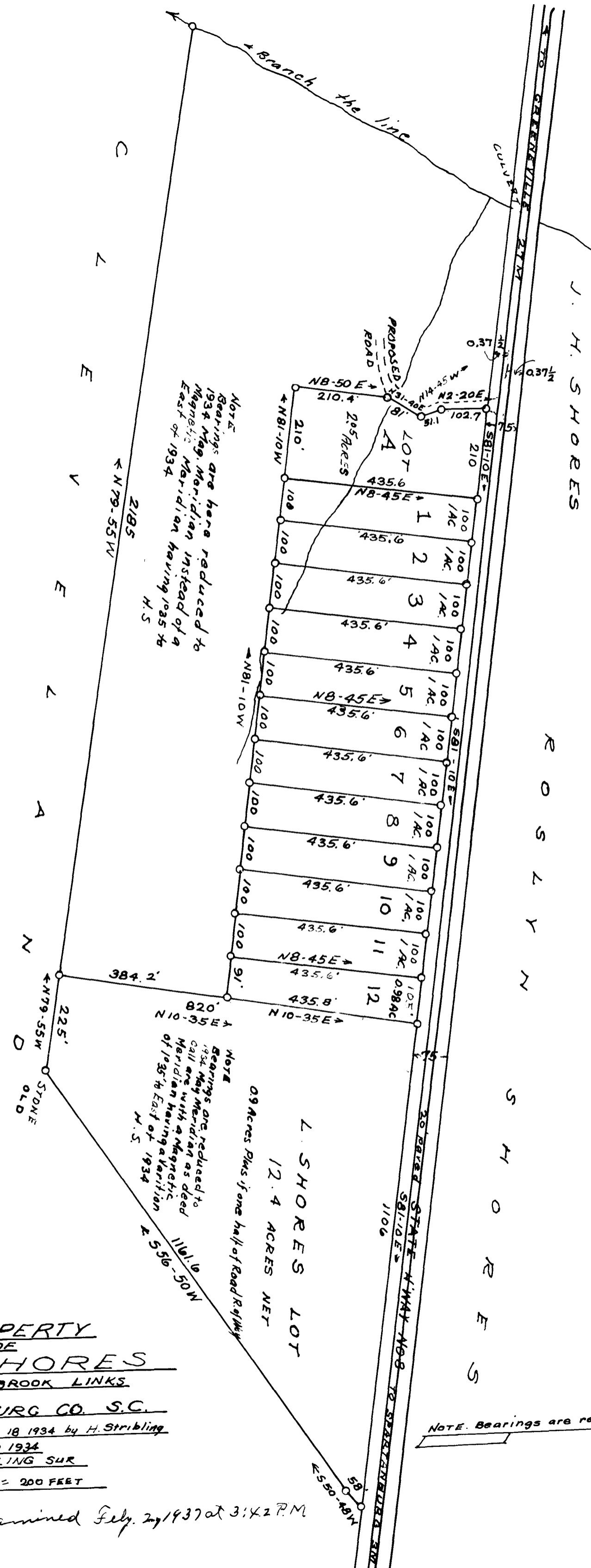


EX PARTE
J. H. SHORES



NOTE
Bearings are here reduced to
1934 Mag. Meridian instead of a
Magnetic Meridian having 1935 to
East of 1934
H.S.

NOTE
Bearings are reduced to
1934 Mag. Meridian as deed
call are with a Magnetic
Meridian having a Variation
of 1935 to East of 1934
H.S.

L. SHORES LOT
12.4 ACRES NET
0.9 ACRES Plus 1/2 of Road Rightway

PROPERTY
OF
J. H. SHORES
OPP. SHORES BROOK LINKS
SPARTANBURG CO. S.C.
Superseding Plat of June 18 1934 by H. Stribling
Dec 10 1934
H. STRIBLING SUR
SCALE 1 INCH = 200 FEET

NOTE. Bearings are reduced to 1934 Meridian

Registered, Certified + Examined Feb. 27, 1937 at 3:42 P.M.