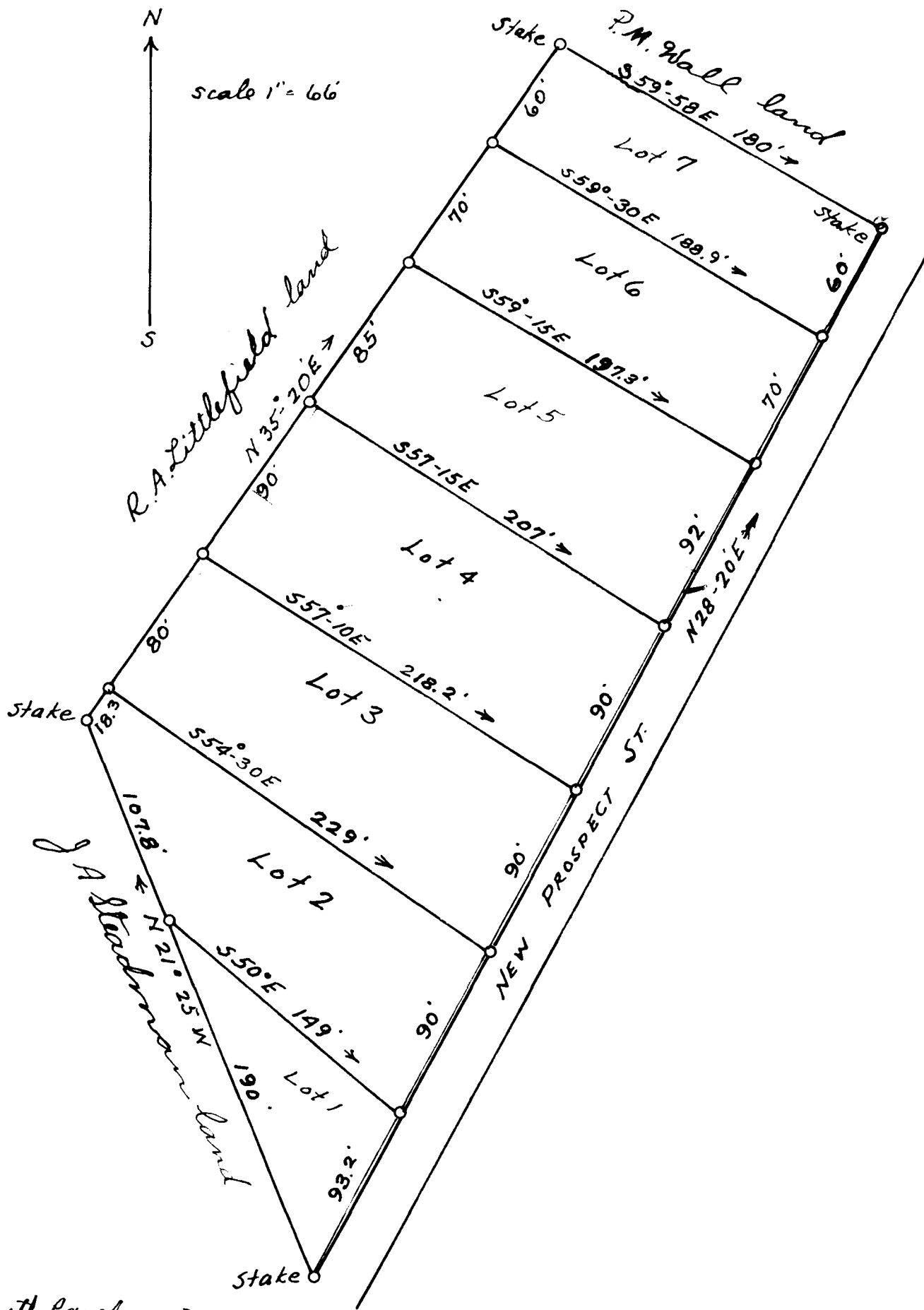


86

EX PARTE
M. LITTLEFIELD



State of South Carolina }
 Spartanburg County } the above plat represents the M. Littlefield lands on
 New Prospect St. in the town of Inman S.C. It has the metes
 and bounds as above shown
 Surveyed and lotted by July 30th 1925
 M. E. Johnson
 Surveyor

Registered, Certified & Examined April 5, 1937 at 8:44 a.m