

96

EX PARTE

CHARLES LANDRUM

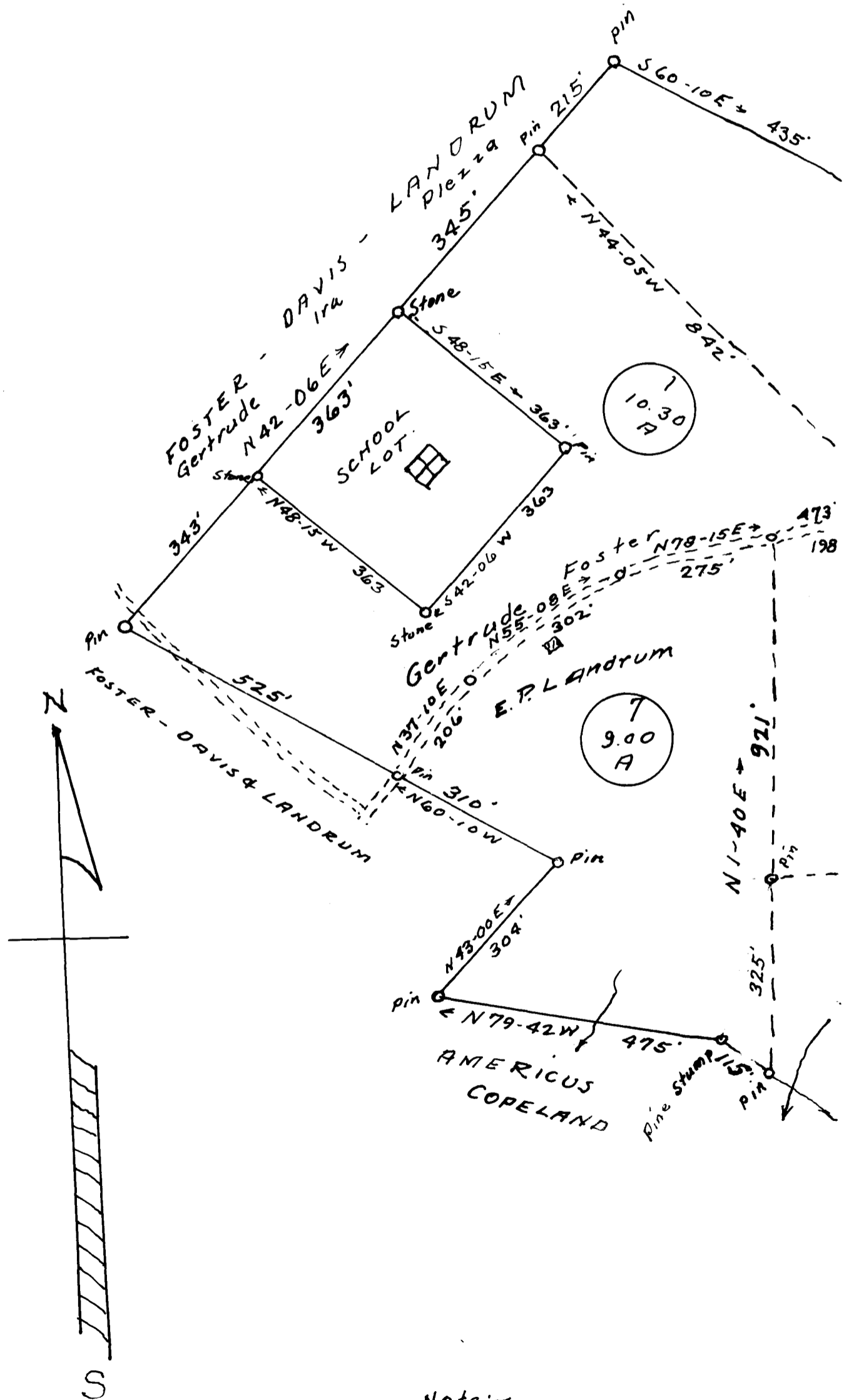
ESTATE OF CHARLES LANDRUM DEC'D

JOLLY SCHOOL DIST

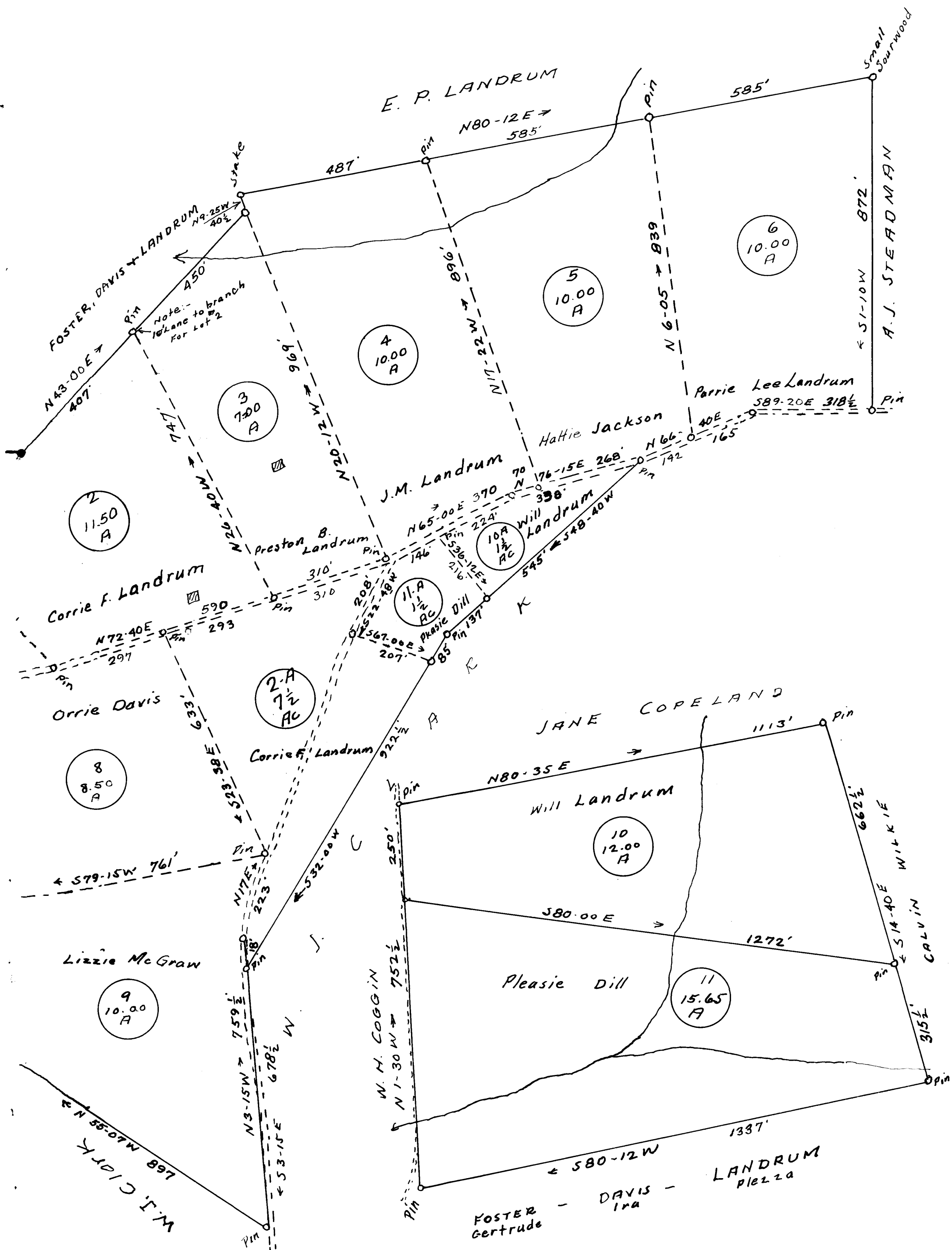
SPARTANBURG COUNTY S.C.

Surveyed - Subdivided April 12, 13, 1937

J.H. ATKINS, Surveyor



Note:-
Scale: 1-in = 200 Feet



Registered, certified & examined May 8, 1937 at 12:08 P.M.