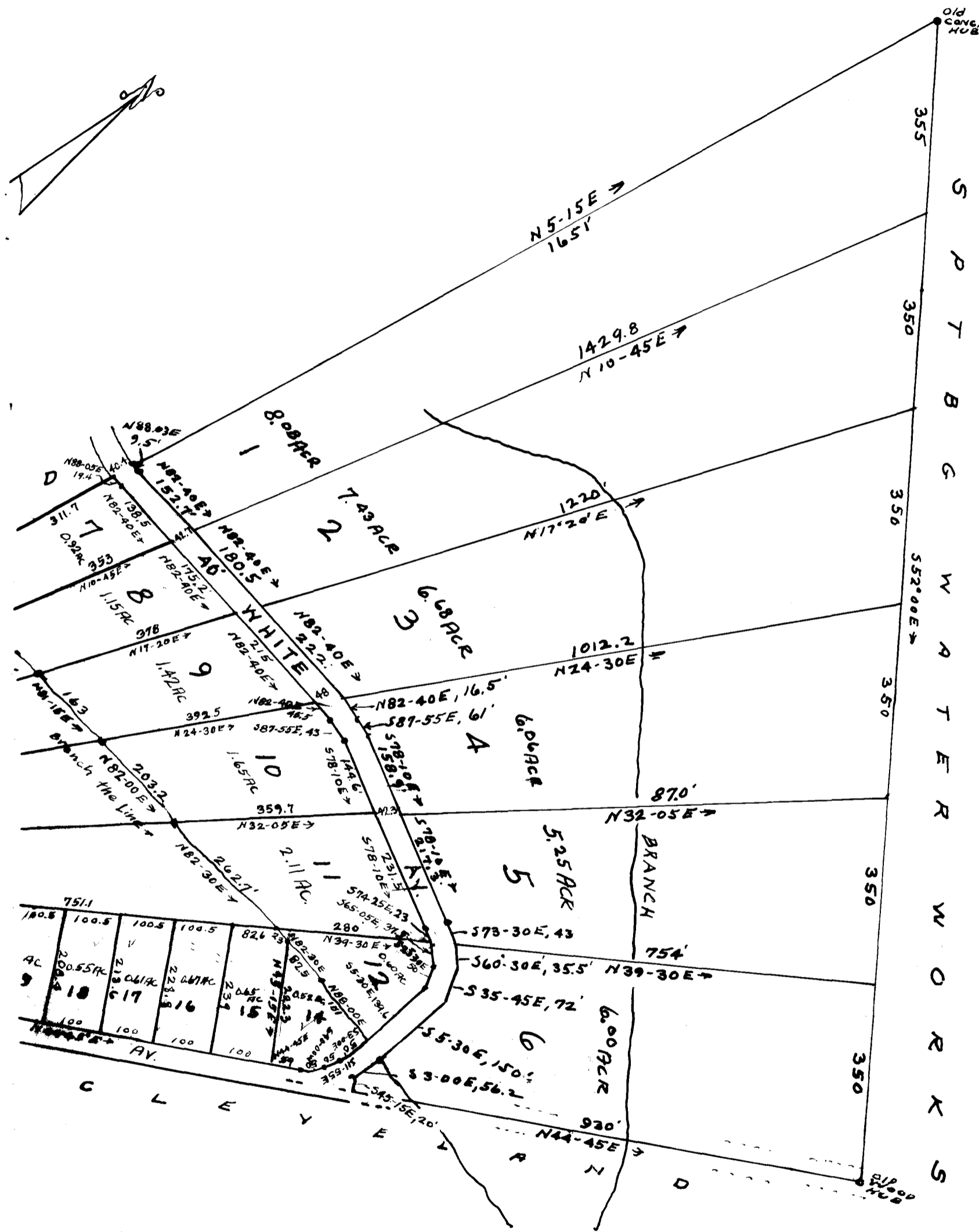


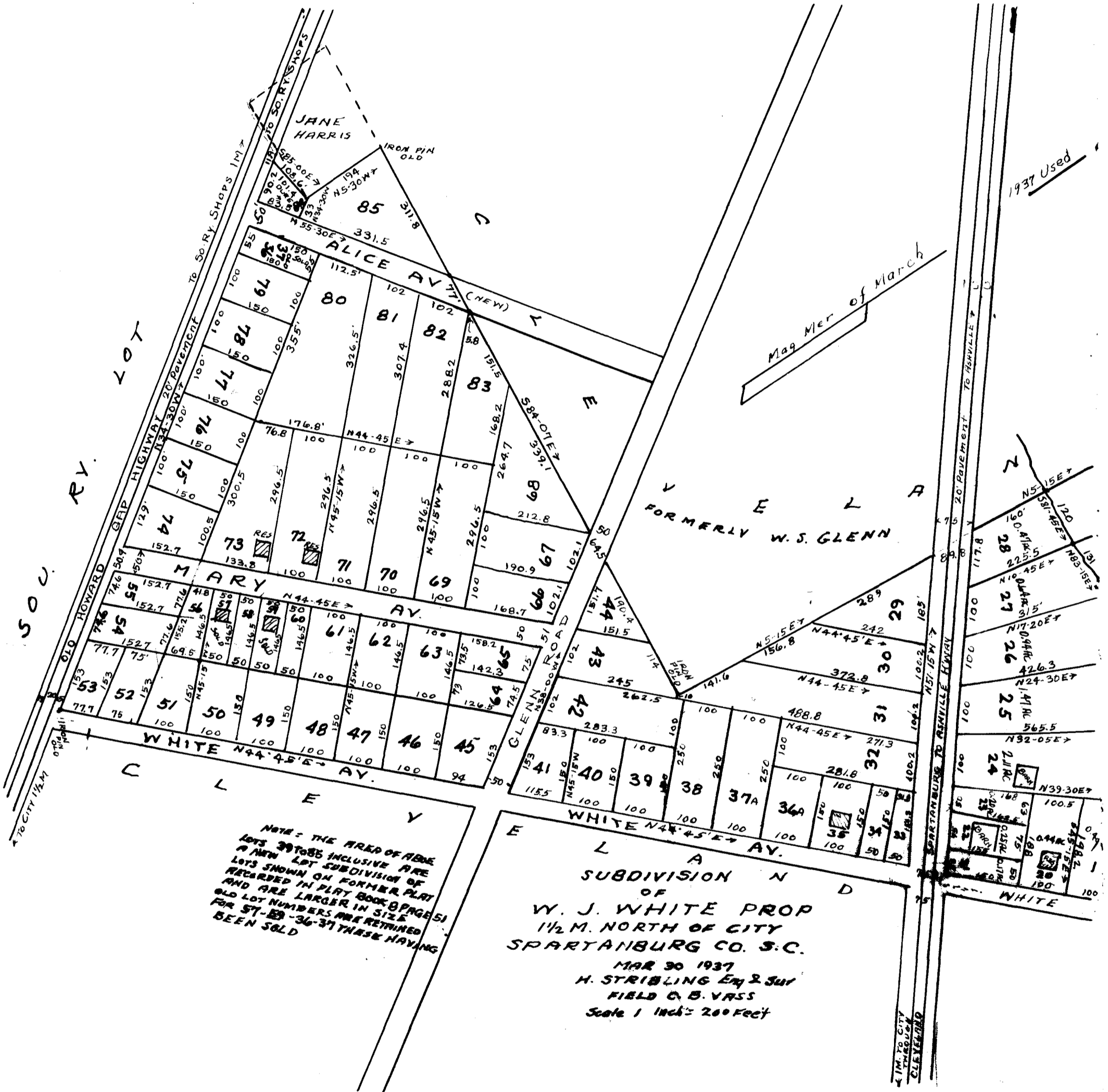
EX PARTE

W. J. WHITE



Registered, Certified + Examined June 17, 1933





NOTE: THE AREA OF ABOVE
 LOTS 29 TO 35 INCLUSIVE ARE
 A NEW LOT SUBDIVISION OF
 RECORDED IN FORMER PLAT
 AND ARE LARGER IN SIZE
 OLD LOT NUMBERS ARE RETAINED
 FOR 27-28-36-37 THESE HAVING
 BEEN SOLD

SUBDIVISION N D
 OF
 W. J. WHITE PROP
 1 1/2 M. NORTH OF CITY
 SPARTANBURG CO. S. C.
 MAR 30 1937
 H. STRIBLING Esq & JUD
 FIELD C. B. VASS
 Scale 1 inch = 200 Feet

1937 Used

