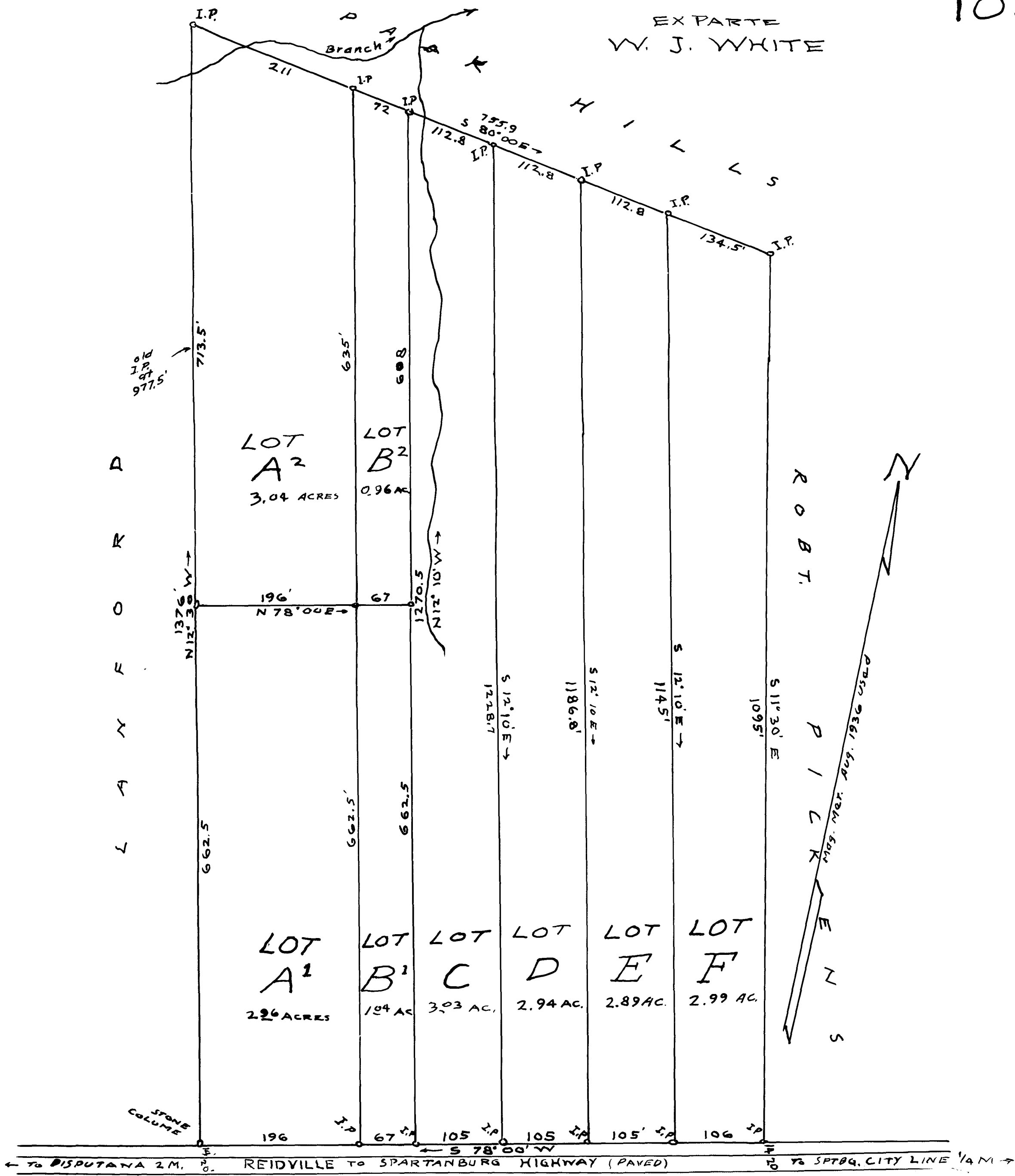


EX PARTE  
W. J. WHITE



SUBDIVISION  
FOR  
W. J. WHITE, A. C. WILLARD, AND D. N. TINSLEY  
W. J. WHITE, PROP.  
1/4 W. OF CITY LINE  
SPARTANBURG CO., S. C.  
JUN 22, 1936  
H. STRIBLING, ENGR. & SUR.  
FIELD C. B. VASS.  
Scale 1 inch = 100 feet.

Registered, Certified & Examined June 22, 1937 at 4:45 P.M.