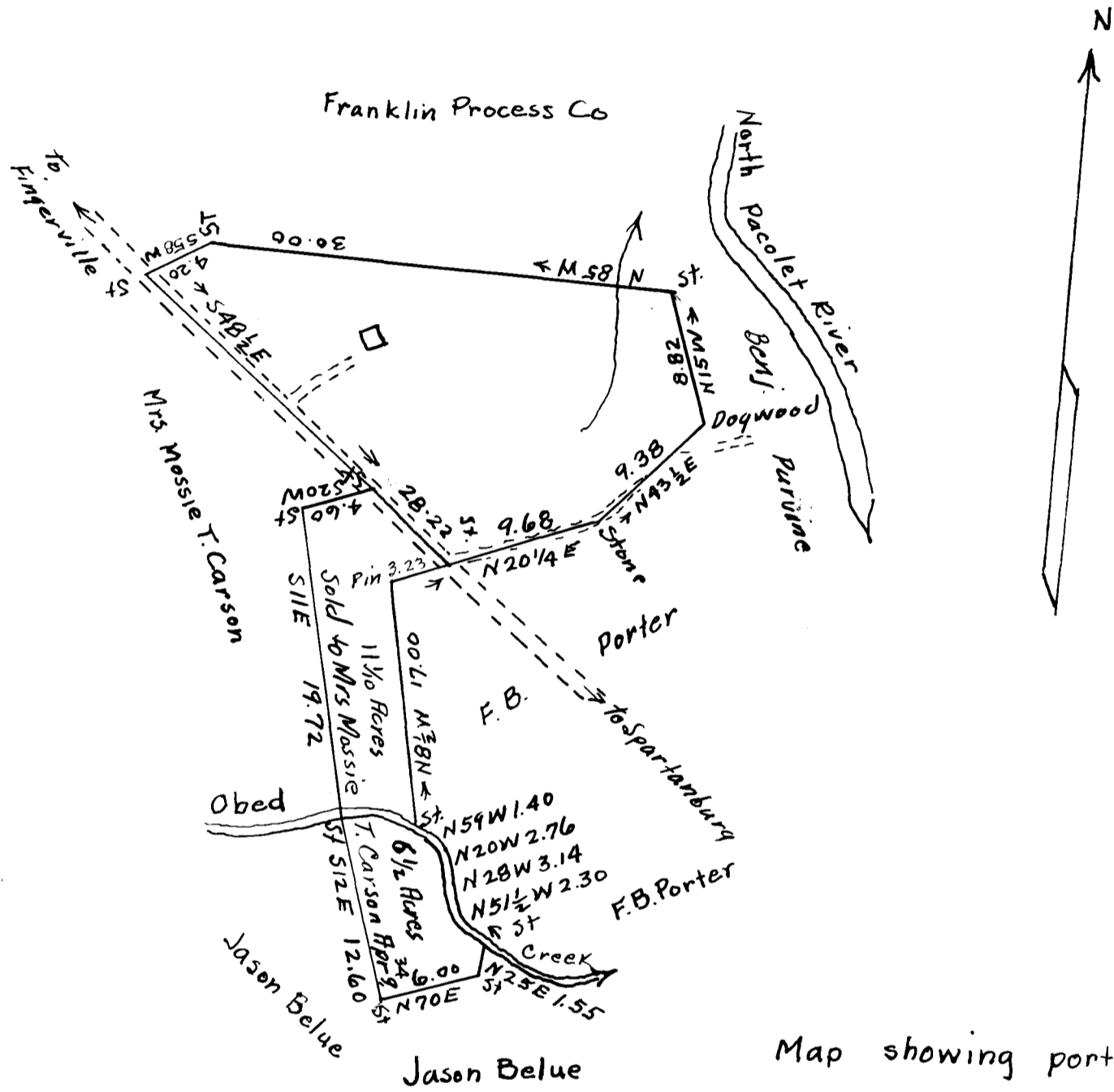


EX PARTE
J. W. TROUT



Map showing portion of
 J.W. Trout farm near Fingerville
 Spartanburg County S.C. Laid
 off for J.S. Trout. Total Area,
 60.5 Acres. Sub-divisions
 and Plat made by me,
 March 13, 1934
 Scale 1" = 10 ch. *John B. Cash*
 Surveyor

Registered, Certified & Examined July 24, 1937 at 9:34 a.m.